



# HO HSING GLOBAL

2020-2021 Brochure



CERT NO 3A1Y304-03

RoHS  
READY



As the main European distributor of Ho Hsing motors, **Global** supplies customers not only with a state of the art motor for every brand of sewing machine, but also with the service customers need to have maximum performance from their sewing machines. With our own Ho Hsing department, **Global** can guarantee full after sales support, repairs and provide you with all the information you need about the latest Ho Hsing technologies and updates.

### G series:

To meet the demand for a cheap, high quality **energy saving** motor with needle positioning, Ho Hsing introduced the G series that is sold all over the world for many years now. With a wide range of parameters the G series can be set to drive your machine perfectly.



### Available G series models:

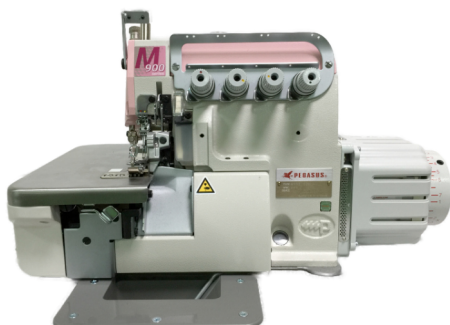
**G40: 400 Watt** motor body for high speed lockstitch, overlock, blind stitch and normal interlock.

**G60-1: 600 Watt** motor body, because of the relative high torque the G-60 can be used on some heavier machines like light to medium weight walking foot machines.

**G60-2:** same as above only with output for **pneumatic** presser foot lifter and needle cooling (motor run signal).

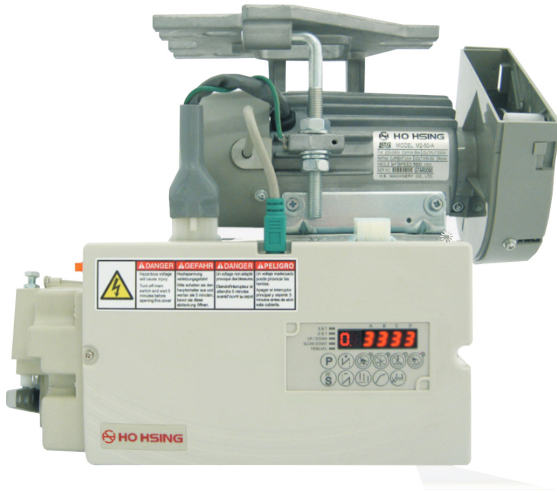
External synchro 700-1 comes as an option. G series can work with or without external synchroniser and there is no need to change any settings for this, the control box will automatically detect the external synchro and adjust itself.

Model	Power	Voltage (1 phase)	Standard motor pulley	PFL (air only)	NCL
G40-1-00-220	400 W	220 – 240 V	90 mm.	-	-
G60-1-00-220	600 W	220 – 240 V	65 mm.	-	-
G60-2-GL-220	600 W	220 – 240 V	65 mm.	√	√



### GD40 direct drive set for several models of Juki, Pegasus, Yamato overlock sewing machines:

For less vibration and smoother running of your overlock machine, a direct drive mini motor is mounted directly on the drive shaft of your overlock machine. A separate GD40 control box is mounted under the table. A special bracket that matches your machine model is included in the set.



### **MH series:**

To replace the successful MA series, the powerful 600 Watt MH series ensures high performance on your light or medium weight lockstitch, overlock or interlock applications. Suitable for many automatic machines with reverse, trimming, wiping, tension release and presser foot lift.

Unlike the MA series, on MH series all settings can also be made on the control box, therefore, C200M operating panel is optional.

Available models: Brother, Juki and Mitsubishi.

### **i90 series:**

This motor needs no further introduction, with its high torque and solid motor body i90M series supersedes the world wide famous HVP-90 series and is suitable to drive even heavy duty machines like Dürkopp Adler 204. With its great variety of functions it can be used on a wide range of special sewing machine applications.

Available models in 550 Watt: Brother, Juki and Mitsubishi

Available models in 750 Watt: Dürkopp Adler and Mitsubishi



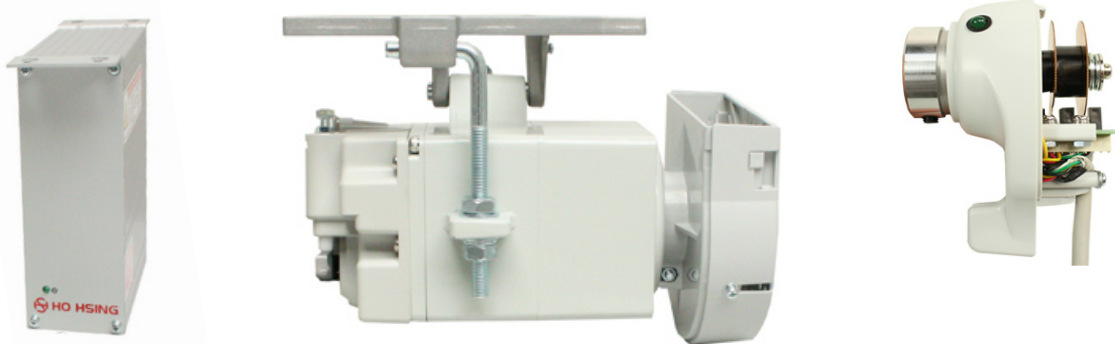
**i50 series:**

Low cost set of separate control box and 400Watt motor body for simple automatic high speed lockstitch and chainstitch machines. A 600 Watt model is also available for light to medium weight walking foot machines and with functions like trimming, back tack and presser foot lifter. The i50 series is suitable to be used on a variety of machine brands and models.

Operating panel is only necessary for programming parameters and changing of settings like back tack stitch setting and trimming. After installation the operating panel can be disconnected.

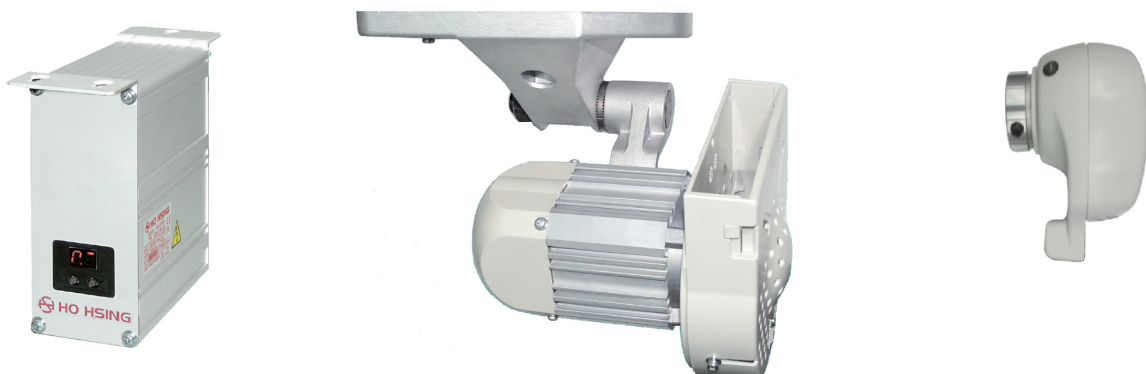
External synchronizer is optional, i50 series can work with the built-in Juki or Brother synchronizer or an external synchronizer. With standard settings for Juki and Brother high speed lockstitch these models are ready to run after installation.

Connectors are original Juki and Brother type.



**GM60-5-GL-220**

A simple, small and low control box with 600 Watt mini motor and external synchroniser together as a set in one carton box. Available functions: needle positioning, trimming (magnet or pneumatic), tension release (only pneumatic), presser foot lift (only pneumatic) and needle cooling function. Safety switch input available. Can be used on interlock with under bed trimmer and light to medium weight walking foot applications. A separate speed control unit is supplied which is convenient for long arm machines.



### **i60 and i70 series:**

Separate control box that can be used in combination with a 500, 600 or 750 Watt mini motor. By choosing the correct mini motor for your sewing machine application a wide variety of sewing machine models can be equipped with this control unit (including direct drive). Operating panel C-200 (i60) or C300 (i70) is optional.



Available functions (depending on the control box model): trimmer, wiper, tension release, presser foot lift, reverse, HP function, second stitch length, puller, material guide, photocell input and flip flop function.

i60 and i70 models use a separate speed control unit that can be installed in a random position under the table, therefore very convenient for long arm machines.

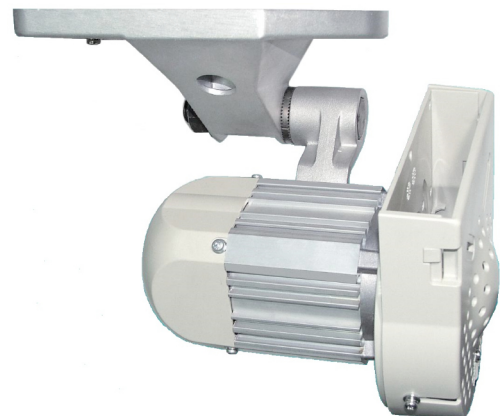
Available i60 models: Dürkopp Adler (Global LP 2970 AUT series), Brother, Juki, Mitsubishi and Pegasus.

Available i70 models: Dürkopp Adler (i70L) , Brother, Mitsubishi, Pegasus (i70M)

### **Mini motors for i60, i70 series:**

i60 and i70 series work in combination with a separate mini motor. With the 500, 600 and 750 Watt models a wide range of sewing applications is covered. The mini motors for under the table are supplied including mounting bracket, V-belt cover and motor pulley.

Also a variety of **direct drive** models are available.



### **Accessories:**

AC0001 - photocell NPN – adjustable sensitivity, **light on** or **dark on** selectable.

AC0002 - standing operation pedal SOP-6H3 for Ho Hsing motor (6-pin plug incl. adapter cable for i70 series)

AC0003 - standing operation pedal SOP-8G for G series (4-pin plug)

AC0004 - synchronizer adapter set 1180-2



**HO HSING**  
**GLOBAL**

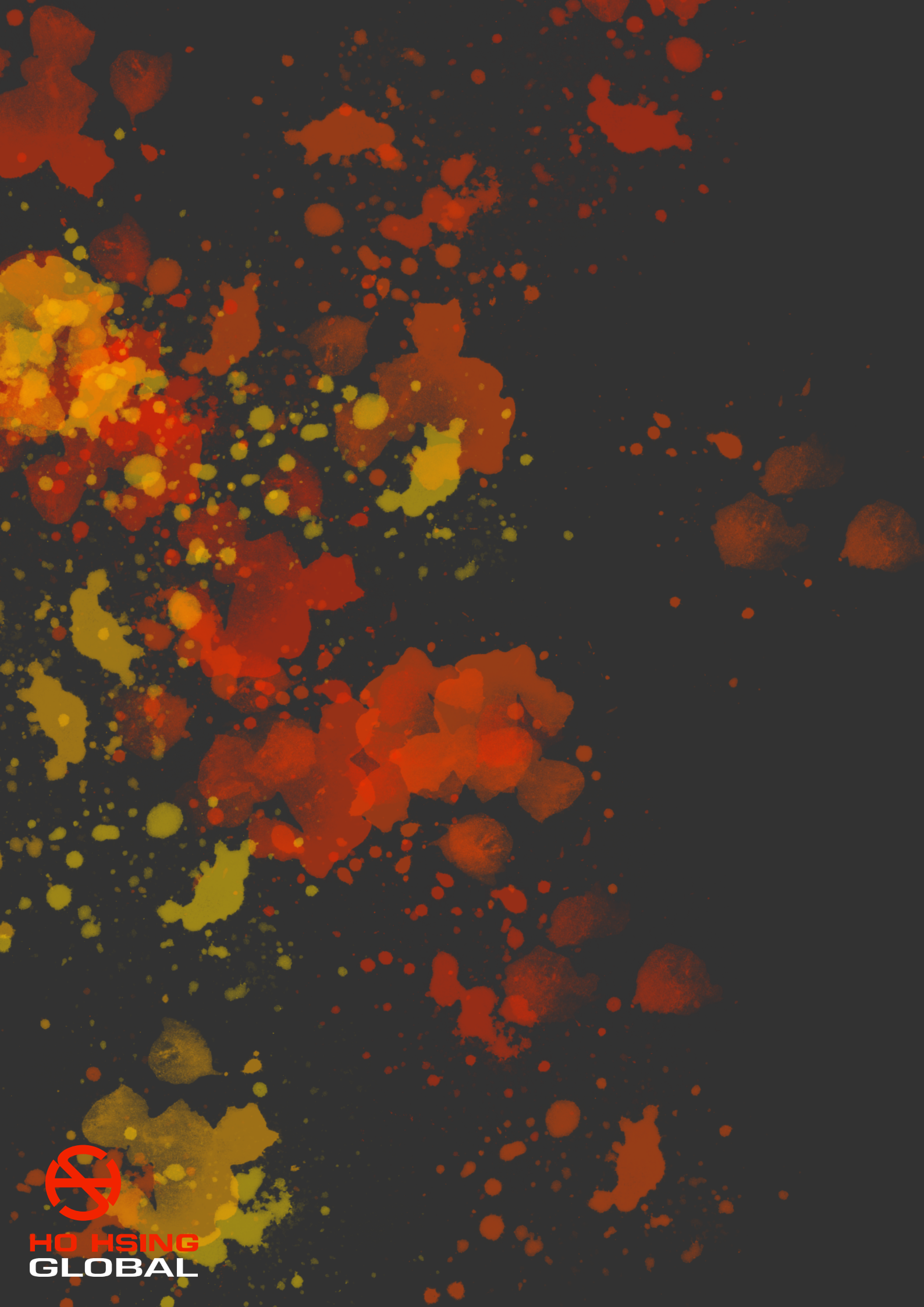
---



**HO HSING  
GLOBAL**

Global code	Ho Hsing code	Description	Optional Synchro	Operating panel	Connector
G40100	G40-1-00-220	400 Watt G series motor without synchro	SY01GG	-	-
G60100	G60-1-00-220	600 Watt G series motor without synchro	SY01GG	-	-
G601NP	G60-1-NP-220	Like G60100 but with max. speed potentiometer	SY01GG	-	-
G60200	G60-2-GL-220	Like G60100 with output for PNEUMATIC PFL and needle cooling	SY01GG	-	Included
G70200	G75-2-GL-230	Like G60200 but with 750 Watt motor body	SY01GG	-	Included
GM60GL	GM60-5-GL-220	Complete set with 600 W. mini motor and synchroniser	Incl.	-	Included
HH0211	MH-4-11-220	600 Watt Mitsubishi style MH motor	SY0128	OP0205	CS7002
i5017W	i50-4-7W-220	400 Watt Juki style i50 motor set	SY0130	OP0205	Included
i501BR	i50-4-BR-220	400 Watt Brother style i50 motor set	SY0129	OP0205	Included
i502BR	i50-4-BR-220	600 Watt Brother style i50 motor set	SY0129	OP0205	Included
i601BR	i60-4-BR-220	Brother model control box i60	SY0129	OP0405	CS9003
i60111	i60-4-11-220	Mitsubishi model control box i60	SY0128	OP0405	CS9003
i6017W	i60-4-7W-220	Juki model control box i60	SY0130	OP0405	CS037W
i60166	i60-4-66-220	Pegasus model control box i60	SY0129	OP0205	-
i601GL	i60-4-GL-220	Dürkopp Adler / Global LP2971 AUT model control box i60	SY0129	OP0305	CS00ED
i70111	i70M-4-11-220	Mitsubishi style control box i70M	SY0128	OP0102	CS9003
i7017W	i70M-4-7W-220	Juki style control box i70M	SY0130	OP0102	CS037W
i701BR	i70M-4-BR-220	Brother style control box i70M	SY0129	OP0102	CS9003
i701ED	i70L-4-ED-220	Dürkopp Adler style control box i70L	SY0129	OP0102	CS00ED
i90211	i90M-4-11-220	Mitsubishi style 550 Watt i90M	SY0128	OP0202	CS9003
i9027W	i90M-4-7W-220	Juki style 550 Watt i90M motor	SY0130	OP0202	CS037W
i902BR	i90M-4-BR-220	Brother style 550 Watt i90M motor	SY0129	OP0202	CS9003
i90411	i90M-4-11-220	Mitsubishi style 750 Watt i90M motor	SY0128	OP0202	CS9003
i904LU	i90M-4-LU-220	i90M motor 750 Watt for Global WF1500 series	SY0130	OP0202	-
i904HY	i90M-4-HY-220	i90M motor 750 Watt for Global WF1520 series	SY0130	OP0202	-
i904ED	i90M-4-ED-220	Dürkopp Adler style 750 Watt i90M motor including synchro	Incl.	OP0202	CS00ED
Global code	Ho Hsing code	Description	Rated speed	Motor pulley	
MT0150	M1-50AB-007	Mini motor 500 W with mounting bracket and V-belt cover	5000	75	
MT0250	M1-50AB-104	Mini motor 500 W direct drive one index signal	5000	-	
MT0350	M1-50AB-007	For chainstitch. MT0150 but with pulley 85 instead of 75 mm.	5000	85	
MT0160	M1-60FE-020	Mini motor 600 W with mounting bracket and V-belt cover	3500	75	
MT0260	M1-60FE-118	Mini motor 600 W direct drive one index signal	3500	-	
MT0175	M1-75CC-012	Mini motor 750 W with mounting bracket and V-belt cover	2500	75	
MT0275	M1-75CC-108	Mini motor 750 W direct drive one index signal	2500	-	
MT0375	M1-75EC-006	Mini motor 750 W with mounting bracket and V-belt cover	3500	75	
Global code	Ho Hsing code	Description	Global code	Ho Hsing code	Description
SY0128	600-28	External synchro Mitsubishi model for Ho Hsing -11	Rectangular 6 pin		
SY0129	600-29	External synchro Brother , Dürkopp Adler and more -BR and -ED	Round 8 pin		
SY0130	600-30	External synchro Juki model for Ho Hsing -7W and -LU	Round 7 pin		
SY01GG	700-1	External synchro for G series	Rectangular 4 pin		
Global code	Ho Hsing code	Description	Global code	Ho Hsing code	Description
OP0102	C-300	Operating panel for i70M and i70L series	9 pin D sub		
OP0103	C-60	Operating panel including parameter setting for special models	9 pin D sub		
OP0202	C-300M	Operating panel for i90M series	Mini DIN		
OP0203	C-60M	Operating panel including parameter setting for i90M	Mini DIN		
OP0205	C-200M	Operating panel for MH series and i60-4-66-220	Mini DIN		
OP0305	C-210M	Operating panel for i60-4-GL-220	Mini DIN		
OP0405	C-200	Operating panel for i60 model -BR,-11 and -7W	9 pin D sub		

Contact **Global** for prices or technical information of the Ho Hsing motor. Our Ho Hsing product manager Mr. Martijn Tjon-A-Njoek ([martijn@globalsew.com](mailto:martijn@globalsew.com)) will gladly help you to select the perfect motor for your sewing machine application.



**HO HSING**  
**GLOBAL**