

S400 Series Level 4B Autonomous Drone

S400 is an autonomous drone powered by AI for exceptional data capture. Even under extreme conditions with no satellite signals and strong electromagnetic interference, it is capable of high-precision navigation, real-time path planning, and autonomous obstacle-avoidance flight, demonstrating its exceptional environmental adaptability and intelligent flight performance.



S400H Version

- 8 MP High-definition
- Fixed-focus Lens with 6x Digital Zoom
- High-precision 3-Axis Gimbal



S400T Version

- 640x512 Thermal Imaging
- -20°C to 150°C Temperature Measuring
- Black Hot, White Hot, and Pseudo-color



S400A Version

- Gas Detection Module
- Carbon Monoxide
- Hydrogen Sulfide, Oxygen



Main Features

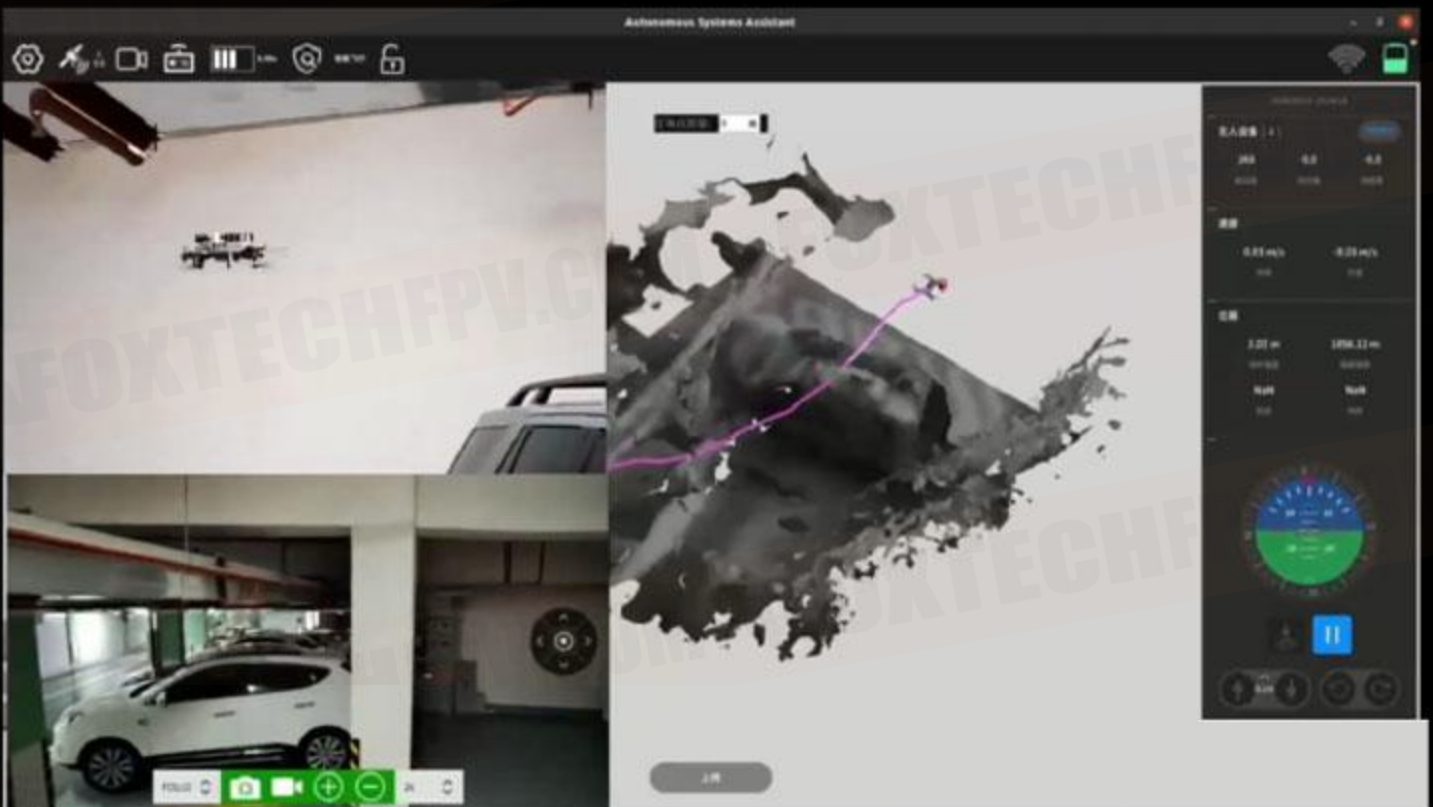
- Level 4B Autonomous Flying
- Biomimetic Vision Technology
- Navigation without GNSS
- Autonomous Obstacle-avoidance

- Real-time Path Planning
- Anti-EMISystem
- 3D Reconstruction
- With Light Source

Level 4B Autonomous Flying

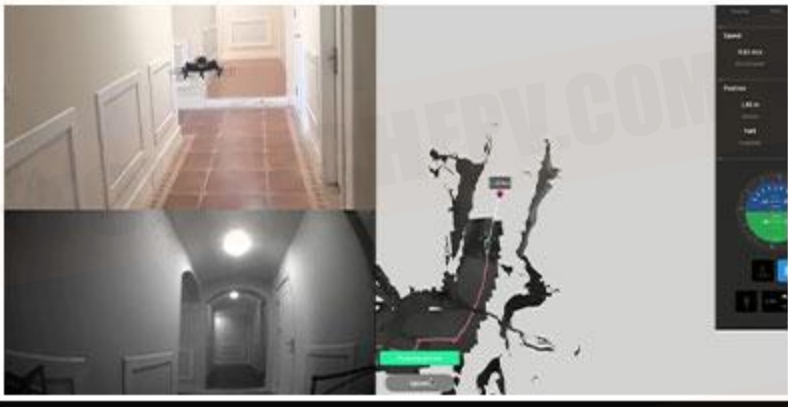
Utilizing biomimetic vision technology, it can autonomously navigate and fly around obstacles in narrow spaces.

L4B



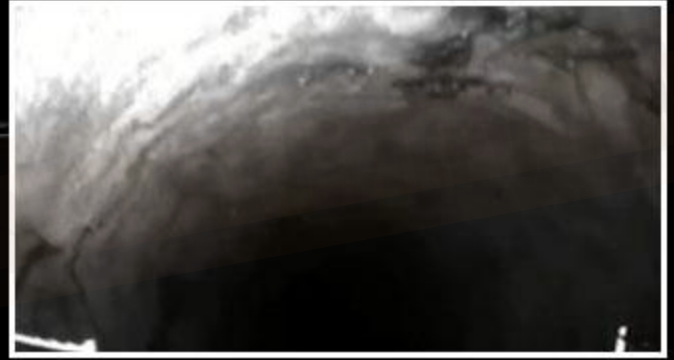
Intelligent Path Planning and Obstacle Avoidance

Six custom-designed navigation lenses, eliminating blind spots so you can fly fearlessly in any environment.



Active Light Source For Night Operation

Enables rapid and safe high-precision 3D reconstruction and real-time HD image transmission in complete darkness.



Real-time 3D Mapping and Display

Ground Station Software-ASA



- Just tap the target location, and the drone will automatically fly to the destination.
- Individuals with no operational experience can quickly learn to use it.
- Capable of real-time display of 3D flight paths and the 3D reconstruction model of the surrounding environment.

Application Scenarios



Mine Inspection



Chemical Plant Workshop



Oil and Gas Platform



Emergency Disposal

Gas Sensors (S400A)

Standard Module Detectable Gases

Carbon Monoxide, Hydrogen Sulfide, Oxygen, Methane

Expansion Module Detectable Gases (Optional)

Hydrogen, Ammonia, Ethylene Oxide, Sulfur Dioxide, Nitrogen Dioxide, Hydrogen Fluoride, Phosphine, Hydrochloric Acid, Hydrocyanic Acid, Chlorine, Vinyl Chloride, Arsine, Benzene, Toluene, Trimethylamine, Styrene, Methyl Mercaptan, Dimethyl Sulfide, Dimethyl Disulfide, Carbon Disulfide, Formaldehyde, Alcohol, Ozone, Ethylene Oxide

HD Camera and Gimbal (S400H)

Lens

Fixed focus, 6x digital zoom

Image Sensor

Sony 1/1.7 inch, 8 million effective pixels

Pitch

-135°-45°

Yaw

-160°-160°

Roll

-30°-30°

Thermal Image (S400T)

Resolution

640x512

Frame Rate

25Hz/30Hz

Image Display

Black Hot, White Hot, and Pseudo-color

Temperature Measurement Range

-20°C to -150°C

Temperature Measurement Accuracy

±3°C

Autonomous Drone

L4B Autonomous Flight Level

In 90% of complex scenarios, manual pilot control is not required, thanks to fully autonomous intelligent flight capabilities including spatial environment awareness, obstacle recognition, and real-time path planning. These complex environments encompass conditions such as lack of satellite signals, strong electromagnetic interference, confined spaces, and intricate obstacle layouts.

Takeoff Weight

1292g

Dimensions

Without Propeller Guards: 384x384x166mm

Diagonal Wheelbase

292mm

Max Ascent Speed

6m/s

Max Descent Speed

6m/s

Max Takeoff Altitude

4000m

Max Hovering Time(at sea level, no wind)

28 Mins(Hover)

Max Obstacle-Free Flying Speed

10m/s

Autonomous Obstacle Avoidance Flying Speed

0-3m/s(Speed Varies Based on Environmental Obstacle Complexity)

Operating Temperature Range

-15°C to 40°C

Communication Method

15 km range in open areas; stable flight in enclosed spaces

Communication Frequency

1.4GHz

Hovering Accuracy

±5cm

Propeller Size

7 Inch

Active Lighting: (enabled for flying in complete darkness)

Front, Bottom, and Top Directional Active Lighting with Adjustable Brightness

Battery

Battery Type

Polymer Lithium Battery

Nominal Voltage

16.8V

Charge Limit Voltage

17.8V

Charging Temperature Range

5°C to 40°C

Maximum Charging Current

5A

Capacity

8100mAh

Charger

Input

AC100-240V,DC 6.5-30V

Charging Current

0.1-15AX2

Charging Power

DC 325WX2