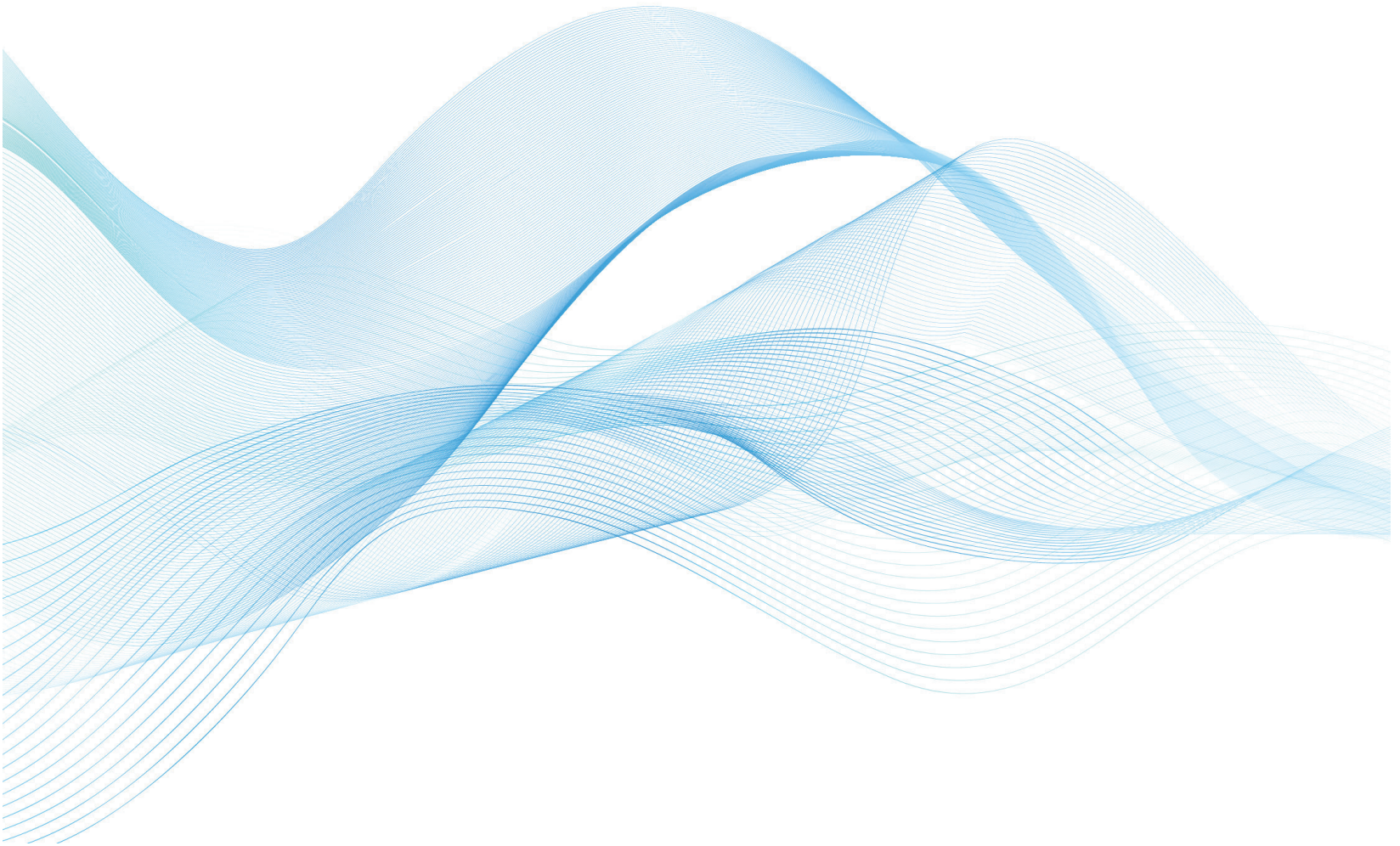


TOSOT

PRODUCT LINE-UP 2023

**RESIDENTIAL & COMMERCIAL HVAC PRODUCTS
DUCTLESS SPLIT HEAT PUMP & AIR
CONDITIONING SYSTEMS**



[TOSOTCOMFORT.COM](https://tosotcomfort.com)

BRAND PROFILE

TOSOT is an HVAC equipment brand fully owned, manufactured and developed by Gree Electric Appliances, a world-famous home appliances enterprise.

Supported by Gree's powerful R&D strength and innovative industrial spirit, TOSOT has got a complete industry chain of residential air conditioners, central air conditioners and compressors, etc. All TOSOT products are released to global consumers simultaneously with Gree products.

Gree Electric Appliances Company, as the world's largest specialized air conditioning listed enterprise integrating R&D, manufacturing, marketing and service, has 7 production bases in China (Zhuhai, Chongqing, Hefei, Zhengzhou, Wuhan, Shijiazhuang, Wuhu), another 2 in Brazil and Pakistan, with more than 70,000 employees. In 2013, Gree's sales revenue exceeded 19 billion USD. Gree has been ranked on the Fortune Magazine as one of the Top 100 Chinese listed companies for 12 consecutive years. Gree-made air conditioners are sold in over 100 countries and regions.

Since 2005, TOSOT has access to the international market and enjoyed a good reputation. By 2014, TOSOT has built up a high-end brand image in dozens of countries in Asia, Europe, Americas, Africa, etc., and gained an advantage in market share. Relying on technology innovation, TOSOT endeavors to improve quality and service, providing a better living solution and user experience. TOSOT, made in China, loved by the world.



GREE's headquarter in Zhuhai, China.

PRODUCT FEATURES



Turbo Cooling

Press "Turbo" button on remote controller to enjoy a larger air flow, which enables the indoor temperature to reach the set temp in a shorter time.



4-Way Air Outlet

The louver can be vertically or horizontally adjusted so as to maximize comfort in the room.



Low Noise

Indoor Units noise lowers to 21dB(A), making you feel like staying on the Moon.



7-Fan Speeds

From super low to turbo, choose desired air flow.



Intelligent Defrosting

- Maximize warm comfort with shorter defrosting time.
- Traditional defrosting works by setting time. E.g. defrosting process is on for 10 mins for every 50mins.
- Gree I-Defrosting is only performed when needed, which reduces energy waste by eliminating the unnecessary defrosting process.



3 Sleep Curves

- **Mode 1:** Indoor temperature automatically rises (when cooling) or drops (when heating).
- **Mode 2:** Featuring unique refreshment function, the temperature is automatically adjusted to be a little lower before you wake up.
- **Mode 3:** You could design your own sleep curve under DIY mode.



CONTENTS

DFS SINGLE ZONES

Single Zone Systems - Entry Level - Up to 19 SEER	7
Single Zone Systems - Mid Level - Up to 25 SEER	8
Single Zone Systems - High Level - Up to 38 SEER	9

DFS MULTI ZONES

Outdoor Units

Multi Zone Manhattan (HMO) Series Condensers (18K - 42K BTU)	17
--	----

Indoor Units

· Ceiling Cassettes	20
· Slim/Concealed Ducts	22
· Mini-consoles	24
· Floor/Ceiling Consoles	26
· Wall-mounted Units	28

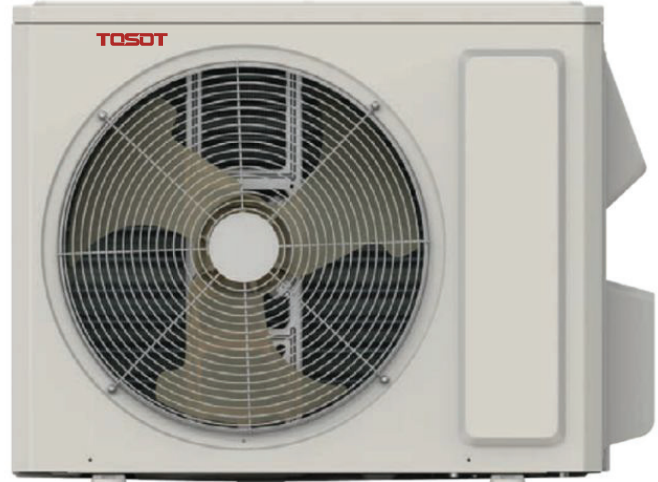
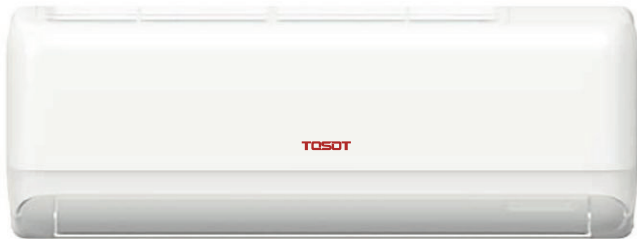
CENTRAL DUCTED HEAT PUMP SYSTEMS	32
----------------------------------	----

DFS SINGLE

ZONES

SINGLE ZONE SYSTEMS

ENTRY LEVEL SERIES : UP TO 19 SEER



Timer



Auto Clean



Automatic Operation



LED Display



Intelligent Defrosting



Compact Design



Clock Display



Turbo Button



Comfortable Sleep Mode



Cold Air Prevention



Self-Diagnosis



Auto Restart



Lock



-4°F Cooling



I Feel



Healthy Filters



Golden Fin



Wired Controller

FEATURES

Standard

Optional



WARRANTY

10 year

limited parts warranty

10 year

limited compressor warranty

- HIGH EFFICIENCY, UP TO 19.5 SEER2 / 8.6 HSPF2
- SLEEK LOOK TO BLEND WITH YOUR DECOR
- PRECISE AIRFLOW CONTROL
- BUILT-IN WIFI
- AUTO - CLEAN FUNCTION

Capacity	9k-24k
Voltage	115V, 230V
HSPF	9.8(HSPF)8.6(HSPF2)
EER	11.3
SEER	19.5(SEER)19.5(SEER2)

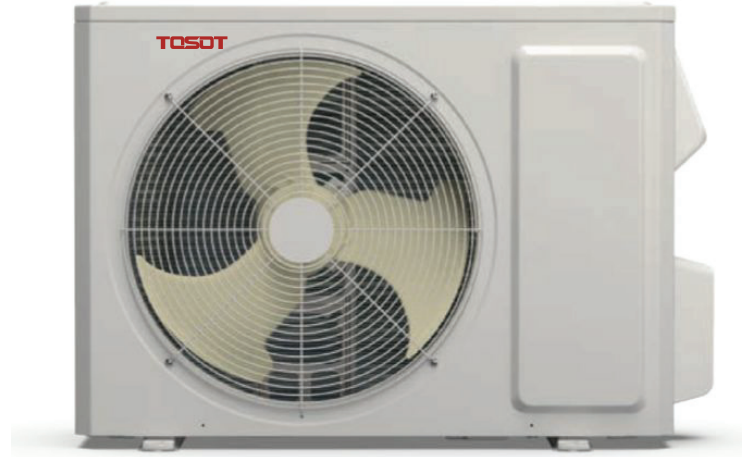
- G10 inverter technology
- I-Feel function
- Multiple fan speeds
- Sleep function
- Acrylic resin coil coating
- Dehumidification
- Intelligent preheating

- Automatic voltage adaption
- Low voltage start-up
- Self-diagnosis
- Swing louver control
- LED display settings
- Privacy lock mode
- Cooling range: -4°F - 122°F

- Heating range: -13°F - 75°F
- Auto-Clean

SINGLE ZONE SYSTEMS

MID LEVEL SERIES : UP TO 25 SEER



Timer



Auto Clean



Automatic Operation



LED Display



Intelligent Defrosting



Compact Design



Clock Display



Turbo Button



Comfortable Sleep Mode



Cold Air Prevention



Self-Diagnosis



Auto Restart



Lock



-4°F Cooling



-22°F Heating



I Feel



Healthy Filters



Golden Fin



Wired Controller

FEATURES

○ Standard

● Optional



WARRANTY

10 year

limited parts warranty

10 year

limited compressor warranty

- HIGH EFFICIENCY, UP TO 26.5 SEER / 12 HSPF
- SLEEK LOOK TO BLEND WITH YOUR DECOR
- PRECISE AIRFLOW CONTROL
- BUILT-IN WIFI
- AUTO - CLEAN FUNCTION

Capacity	9k-36k
Voltage	115V, 230V
HSPF	Up to 12
EER	Up to 14.6
SEER	Up to 26.5

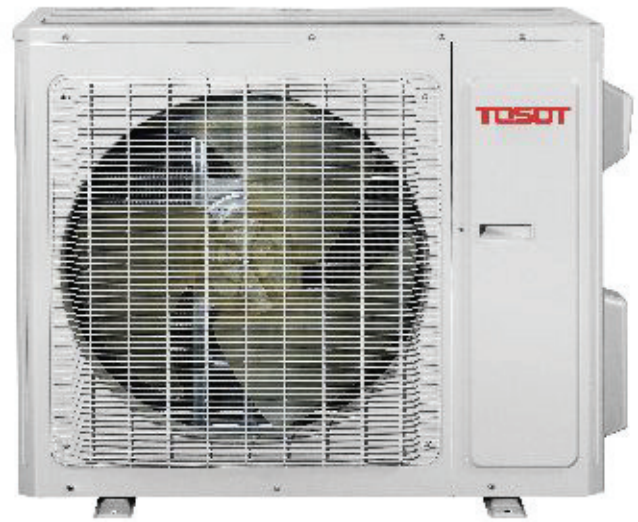
- G10 inverter technology
- I-Feel function
- Multiple fan speeds
- Sleep function
- Acrylic resin coil coating
- Dehumidification
- Intelligent preheating

- Automatic voltage adaption
- Low voltage start-up
- Self-diagnosis
- Swing louver control
- LED display settings
- Privacy lock mode
- Cooling range: -4°F - 122°F

- Heating range: -13°F - 75°F
- Auto-Clean

SINGLE ZONE SYSTEMS

HIGH LEVEL ULTRA HEAT SERIES : UP TO 38 SEER



Timer



Low Voltage Start-Up



Automatic Operation



LED Display



IR Remote Control



Multiple Speed Fan



Adjustable Airflow



Power Failure Mode



Comfortable Sleep Mode



Intelligent Pre-Heating



Self-Diagnosis



Auto Restart



Privacy Lock Mode



Fahrenheit ° F / Celsius ° C



Quiet Operation



I Feel



Polymeric Air Filters



Golden Fin



Wired Controller

FEATURES

○ Standard

● Optional



WARRANTY

10 year

limited parts warranty

10 year

limited compressor warranty

- HIGH EFFICIENCY, UP TO 38 SEER / 15 HSPF
- ULTRA HEATING: -22f HEATING, 80% HEATING CAPACITY; -4f HEATING, 100% HEATING CAPACITY
- TURBO COOLING: "TURBO" BUTTON ON REMOTE CONTROLLER TO ENJOY A LARGER AIR FLOW
- BUILT-IN WIFI
- AUTO - CLEAN FUNCTION

Capacity	9k-36k
Voltage	230V
HSPF	Up to 15
EER	Up to 18
SEER	Up to 38

ENTRY LEVEL: UP TO 19 SEER MODEL		TWH09ATCXB-A3DNA3A	TWH09ATCXB-D3DNA3A	TWH12ATCXB-A3DNA3C	TWH12ATCXB-D3DNA3C	TWH18ATDXD-D3DNA3A	TWH24ATEXF-D3DNA3E
Model							
Rated Voltage	V~	115	208/230	115	208/230	208/230	208/230
Rated Frequency	Hz	60	60	60	60	60	60
Phases	-	1	1	1	1	1	1
Power Supply Mode	-	outdoor	Outdoor	Outdoor	Outdoor	Outdoor	Outdoor
Cooling Capacity	Btu/h	9,100	9100	12000	12000	17600	22000
Heating Capacity	Btu/h	10,000	10000	12000	12000	19100	24000
Cooling Power Input	W	771	805	1380	1380	1750	1896
Heating Power Input	W	814	781	1004	1004	1750	2051
Cooling Current	A	8.7	3.75	15	6.2	7.95	8.5
Heating Current	A	9.2	3.9	10.9	4.5	7.95	9.5
Rated Input	W	1450	1450	1650	1650	2300	2400
Rated Current	A	17.5	6.5	17.9	6.2	9.5	12
EER	(Btu/h)/W	11.3	11.30	8.7	8.7	10.05	11.6
COP	(Btu/h)/W	12.3	12.80	11.95	11.95	10.90	11.7
SEER	-	19.5(SEER)19.5(SEER2)	19.5(SEER)/19.5(SEER2)	17.5(SEER) 17.5(SEER2)	17.5(SEER) 17.5(SEER2)	17.5(SEER) 17.5(SEER2)	18(SEER) 18(SEER2)
HSPF	-	9.8(HSPF)8.6(HSPF2)	10(HSPF)8.8(HSPF2)	10(HSPF) 8.5(HSPF2)	10(HSPF) 8.5(HSPF2)	9(HSPF) 8.5(HSPF2)	10(HSPF) 8.5(HSPF2)
Air Flow Volume	CFM	353/282/264/229/211/194/158	353/282/264/229/211/194/158	424/353/324/277/247/224/182	424/353/324/277/247/224/182	618/512/471/436/395/336/283	677/589/559/500/471/441/412
Dehumidifying Volume	Pint/D	1.69	1.69	2.96	2.96	3.8	5.28
Indoor Unit Model							
Fan Type	-	Cross-flow	Cross-flow	Cross-flow	Cross-flow	Cross-flow	Cross-flow
Fan Motor Power Output	W	20	20	15	15	45	45
Fan Motor RLA	A	0.40	0.30	0.40	0.40	0.7	0.45
Sound Pressure Level	dB (A)	Cooling:41/37/35/33/31/28/26 Heating:41/36/35/34/31/29/27	1350/1150/1100/1000/950/850/750 1300/1100/1050/1000/950/850/800	Cooling:47/39/38/35/33/32/27 Heating:44/39/37/36/34/32/30	Cooling:47/39/38/35/33/32/27 Heating:44/39/37/36/34/32/30	Cooling:50/46/44/42/40/36/32 Heating:49/46/44/41/38/34/30	Cooling: 51/47/45/42/40/38/36 Heating: 52/48/45/42/40/38/37
Sound Power Level	dB (A)	Cooling:51/47/45/43/41/38/36 Heating:51/46/45/44/41/39/37	Cooling:51/47/44/42/41/38/36 Heating:51/46/44/42/41/38/36	Cooling:57/49/48/45/43/42/37 Heating:54/49/47/46/44/42/40	Cooling:57/49/48/45/43/42/37 Heating:54/49/47/46/44/42/40	Cooling:60/56/54/52/50/46/42 Heating:59/56/54/51/48/44/40	Cooling: 51/47/45/42/40/38/36 Heating: 52/48/45/42/40/38/37
Dimension (W×H×D)	Inch	32 7/8×10 53/64×7 7/8	32 7/8×10 53/64×7 7/8	32 7/8×10 53/64×7 7/8	32 56/64×10 53/64×7 7/8	37 1/8×13 7/64×9 11/16	42 7/16×13 7/64×9 11/16
Package Carton Dimension (L×W×H)	Inch	35 1/32×12 61/64×10 15/64	35 1/32×12 61/64×10 15/64	35 3/64×12 61/64×10 15/64	35 3/64×12 61/64×10 15/64	39 7/32×15 5/8×12 9/32	44 13/32×15 63/64×12 23/32
Package Dimension (L×W×H)	Inch	35 15/64×13 37/64×10 43/64	35 15/64×13 37/64×10 43/64	35 15/64×13 37/64×10 43/64	35 15/64×13 37/64×10 43/64	39 13/32×15 15/16×12 43/64	44 39/64/32×16 19/64×13 7/64
Net Weight	lb	19.8	19.8	19.8	19.8	28.7	33.1
Gross Weight	lb	2425v	24.3	24.3	24.3	34.2	39.7

Outdoor Unit Model		TWH09ATCXB-A3DNA3A0	TWH09ATCXB-D3DNA3A0	TWH12ATCXB-A3DNA3C0	TWH12ATCXB-D3DNA3C0	TWH18ATDXD-D3DNA3A0	TWH24ATEXF-D3DNA3E0
Compressor LRA	A	/	/	/	/	25.0	35.00
Compressor RLA	A	10.50	5.20	15.10	7.30	9.35	10.39
Compressor Power Input	W	640	756.6	857	857	1295	1330
Fan Motor Power Output	W	30	30	30	30	30	60
Fan Motor RLA	A	0.63	0.40	0.70	0.60	0.9	0.73
Fan Motor Capacitor	μF	/	/	/	/	/	3.5
Outdoor Unit Air Flow Volume	CFM	1148	1148	1148	1148	1480	1883
Condenser Form	-	Aluminum Fin-copper Tube	Aluminum Fin-copper Tube	Aluminum Fin-copper Tube	Aluminum Fin-copper Tube	Aluminum Fin-copper Tube	Aluminum Fin-copper Tube
Line Set Size (Liquid + Gas) - Flared Connections	inch	1/4 - 3/8	1/4 - 3/8	1/4 - 3/8	1/4 - 3/8	1/4 - 1/2	1/4 - 5/8
Set Temperature Range	°F	61~86	61~86	61~86	61~86	61~86	61~86
Cooling Operation Ambient Temperature Range	°F	0~115	0~115	0~115	0~115	0~115	-0.4~122
Heating Operation Ambient Temperature Range	°F	-4~75	-4~75	-4~75	-4~75	-13~75	-13~75
Throttling Method	-	Capillary	Capillary	Capillary	Capillary	Capillary	Electron expansion valve
Sound Pressure Level	dB (A)	51	51	52	52	57	57
Sound Power Level	dB (A)	61	61	62	62	67	67
Dimension (W×H×D)	inch	28 13/16×21 27/32×12 63/64	28 13/16×21 27/32×12 63/64	28 13/16×21 27/32×12 63/64	28 13/16×21 27/32×12 63/64	31 37/64×21 27/32×13 25/32	37 23/32×25 63/64×15 53/64
Dimension of Carton Box (L×W×H)	inch	31 9/64×14 11/16×23 15/64	31 9/64×14 11/16×23 15/64	31 9/64×14 11/16×23 15/64	31 9/64×14 11/16×23 15/64	34 7/32×15 35/64×23 25/64	40 33/64×17 53/64×28 5/32
Dimension of Package(L×W×H)	inch	31 17/64×14 51/64×24 7/32	31 17/64×14 51/64×24 7/32	31 17/64×14 51/64×24 7/32	31 17/64×14 51/64×24 7/32	34 21/64×15 43/64×24 13/32	40 5/8×17 61/64×29 1/64
Net Weight	lb	59.5	56	59.5	57.33	71.7	97
Gross Weight	lb	65	61.7	65.0	62.842	77.2	106.9
Refrigerant	-	R410A	R410A	R410A	R410A	R410A	R410A
Refrigerant Charge	oz	24.34	24.7	0.7	27.5	44.1	52.9
Length	ft	24.6	24.6	24.6	24.6	24.6	24.6
Gas Additional Charge	oz/ft	0.22	0.215	0.22	0.22	0.2	0.5
Outer Diameter Liquid Pipe	inch	1/4	1/4	1/4	1/4	1/4	1/4
Outer Diameter Gas Pipe	inch	3/8	3/8	3/8	3/8	1/2	5/8
Max. Height Distance	ft	39.37	39.37	32.8	32.8	32.8	32.8
Max. Length Distance	ft	65.6	65.62	65.6	65.6	82	82.0

MID LEVEL - UP TO 25 SEER MODEL		TWH09AG25A2A	TWH09AG25A2D	TWH12AG25A2A	TWH12AG25A2D	TWH18AG25A2D	TWH24AG25A2D	TWH30QF25B4D	TWH36QF25B4D
Model									
Rated Voltage	V-	115	208/230	115	208/230	208/230	208/230	208/230	208/230
Rated Frequency	Hz	60	60	60	60	60	60	60	60
Phases	-	1	1	1	1	1	1	1	1
Power Supply Mode	-	Outdoor	Outdoor	Outdoor	Outdoor	Outdoor	Outdoor	Outdoor	Outdoor
Cooling Capacity	Btu/h	9100	9100	12000	12000	18000	22000	30000	33600
Heating Capacity	Btu/h	/	10500	12000	12000	18000	24000	30000	34600
Cooling Power Input	W	623	618	961	961	1384	1679	2667	3200
Heating Power Input	W	/	848	923	923	1384	1870	2588	3200
Cooling Power Current	A	6.72	3	10.4	4.3	6.3	8.1	12	14
Heating Power Current	A	/	3.95	10	4.1	6.3	8.8	11.5	14
Rated Input	W	1100	1343	1500	1500	2350	3100	3900	4000
Rated Cooling Current	A	13.9	4.73	15.2	6.3	11.5	15.3	19	20
Rated Heating Current	A	/	6	16.3	6.7	11.5	13.5	18	18
Air Flow Volume	CFM	371/324/294/265/241/224/194/129	363/324/294/265/235/177/159/106	400/365/330/288/265/247/230/212	400/365/330/288/265/247/230/212	569/500/441/412/383/353/324	736/569/530/471/441/412/383	912/736/706/647/588/530/471	912/736/706/647/588/530/471
Dehumidifying Volume	Pint/h	1.69	1.69	2.96	2.96	38	5.072	7.40	7.40
EER	(Btu/h)/W	14.6	14.72	12.5	12.5	13	13.1	11.25	10.50
COP	(Btu/h)/W	/	12.38	13	13	13	12.8	11.59	10.81
SEER	-	26.5	25.5	24	24	23	24	19	20
HSPF	-	/	12	11	11	/	11	10	9
Indoor Unit Model									
Fan Type	-	Cross-flow	Cross-flow	Cross-flow	Cross-flow	Cross-flow	Cross-flow	Cross-flow	Cross-flow
Fan Diameter Length(DXL)	mm	Φ98×630	Φ98×630	Φ98×630	Φ98×630	Φ106×739	Φ108×830	Φ108×522.7×2	Φ108×522.7×2
Fan Motor Power Output	W	15	20	15	15	45	60	70	70
Fan Motor RLA	A	0.3	0.22	0.3	0.2	0.35	0.3	0.6	0.75
Fan Motor Capacitor	μF	/	/	/	/	/	/	/	/
Evaporator Form	-	Aluminum Fin-copper Tube	Aluminum Fin-copper Tube	Aluminum Fin-copper Tube	Aluminum Fin-copper Tube	Aluminum Fin-copper Tube	Aluminum Fin-copper Tube	Aluminum Fin-copper Tube	Aluminum Fin-copper Tube
Sound Pressure Level	dB (A)	41/37/34/31/29/27/24/22	Cooling: 40/37/35/32/29/26/25/22 Heating: 41/38/36/33/29/27/25	Cooling: 43/38/36/34/32/30/27 Heating: 44/38/36/34/32/30/28	Cooling: 43/38/36/34/32/30/27 Heating: 44/38/36/34/32/30/28	Cooling: 49/43/41/40/37/33/29 Heating: 49/43/41/39/36/32/28	Cooling: 52/44/42/39/38/36/34 Heating: 52/44/42/39/38/36/34	Cooling: 56/50/47/45/42/40/37 Heating: 55/50/48/45/42/40/39	Cooling: 56/50/47/45/42/40/37 Heating: 55/50/48/45/42/40/39
Sound Power Level	dB (A)	51/47/44/41/39/37/34/32	Cooling: 50/47/45/42/39/36/35/32 Heating: 51/48/46/43/39/37/35	Cooling: 53/48/46/44/42/40/37 Heating: 54/48/46/44/42/40/38	Cooling: 53/48/46/44/42/40/37 Heating: 54/48/46/44/42/40/38	Cooling: 49/43/51/50/47/43/39 Heating: 59/53/51/49/46/42/38	Cooling: 62/54/52/49/48/46/44 Heating: 62/54/52/49/48/46/44	Cooling: 66/60/57/55/52/50/47 Heating: 65/60/58/55/52/50/49	Cooling: 66/60/57/55/52/50/47 Heating: 65/60/58/55/52/50/49
Dimension (WXHXD)	Inch	32 31/64×11 17/32×7 23/32	32 31/64×11 17/32×7 23/32	32 31/64×11 17/32×7 23/32	32 31/64×11 17/32×7 23/32	38 21/32×12 1/4×8 45/64	42 21/64×13 7/64×9 11/16	53 9/64×12 53/64×9 61/64	53 9/64×12 53/64×9 61/64
Dimension of Carton Box (LXWXH)	inch	34 1/4×13 47/64×10 1/8	34 1/4×13 47/64×10 1/8	34 1/4×13 47/64×10 1/8	34 1/4×13 47/64×10 1/8	40 29/32×14 27/32×11 19/64	44 13/32×15 63/64×12 23/32	56 39/64×16 29/64×13 55/64	56 39/64×16 29/64×13 55/64
Dimension of Package (LXWXH)	inch	34 29/64×14 3/8×10 35/64	34 29/64×14 3/8×10 35/64	34 29/64×14 3/8×10 35/64	34 29/64×14 3/8×10 35/64	41 7/64×15 5/32×11 11/16	44 39/64×16 19/64×13 7/64	56 47/64×16 37/64×14 7/16	56 47/64×16 37/64×14 7/16
Net Weight	lb	20.9	20.9	20.9	20.9	28.7	35.3	44.1	44.1
Gross Weight	lb	25.4	25.4	25.4	25.4	35.3	41.9	54.0	54.0

Outdoor Unit Model		TWH09AG25A2A0	TWH09AG25A2D0	TWH12AG25A2A0	TWH12AG25A2D0	TWH18AG25A2D	TWH24AG25A2D0	TWH30QF25B4D0	TWH36QF25B4D0
Compressor Type	-	Rotary	Rotary	/	320±20ml Rotary	Rotary	Rotary	Rotary	Rotary
Compressor LRA	A	25	/	15.10	/	/	24	27	40.00
Compressor RLA	A	12.5	6.5	857	6.8	9.6	11	14.2	16.00
Compressor Power Input	W	800	800	/	784	1196	1350	2020	2294
Set Temperature Range	°F	61-86	61-86	900	61-86	61-86	61-86	61-86	61-86
Cooling Operation Ambient Temperature Range	°F	-4-122	-20-122	30	-20-122	-20-122	-20-122	-4-122	-4-122
Heating Operation Ambient Temperature Range	°F	/	-22-86	/	-22-86	-22-86	-22-86	-13-75	-13-75
Condenser Form	-	Aluminum Fin-copper Tube	Aluminum Fin-copper Tube	Aluminum Fin-copper Tube	Aluminum Fin-copper Tube	Aluminum Fin-copper Tube	Aluminum Fin-copper Tube	Aluminum Fin-copper Tube	Aluminum Fin-copper Tube
Fan Motor Power Output	W	30	30	30	30	60	90	90	90
Fan Motor RLA	A	0.4	0.4	0.4	0.4	1.25	0.6	0.9	1.50
Fan Motor Capacitor	µF	/	/	/	/	/	/	/	/
Outdoor Unit Air Flow Volume	CFM	1295	1295	1294.7	1294.7	2119	2648	2648	2648
Sound Pressure Level	dB (A)	51	52	52	52	59	62	62/-/-	62/-/-
Sound Power Level	dB (A)	61	63	62	62	69	72	72/-/-	72/-/-
Dimension (W×H×D)	inch	31.37/64×21.27/32×13.25/32	31.37/64×21.27/32×3.25/32	28.13/16×21.27/32×12.63/64	31.37/64×21.27/32×13.25/32	37.23/32×25.63/64×15.53/64	39.3/8×29.3/8×16.13/16	39.3/8×29.3/8×16.13/16	39.3/8×29.3/8×16.13/16
Dimension of Carton Box (L×W×H)	inch	34.7/32×15.35/64×23.25/64	34.7/32×15.35/64×23.25/64	31.9/64×14.11/16×23.15/64	34.7/32×15.35/64×23.25/64	40.33/64×17.53/64×28.5/32	42.13/32×18.57/64×30.29/32	42.26/64×18.57/64×30.58/64	42.26/64×18.57/64×30.58/64
Dimension of Package (L×W×H)	inch	34.21/64×15.43/64×24.13/32	34.21/64×5.43/64×24.13/32	31.17/64×14.51/64×24.7/32	34.21/64×15.43/64×24.13/32	40.5/8×17.61/64×29.1/64	42.33/64×19.1/64×31.57/64	42.33/64×19.1/64×31.57/64	42.33/64×19.1/64×31.57/64
Net Weight	lb	65	70.6	59.5	70.6	98.1	125.7	113.6	127.9
Gross Weight	lb	70.6	76.1	65.0	76.1	106.943	136.7	124.6	138.9
Refrigerant	-	R410A	R410A	R410A	R410A	R410A	R410A	R410A	R410A
Refrigerant Charge	oz	30	35.3	0.7	42.3	53	60	74.1	84.7
Connection Pipe Length	ft	24.6	24.6	24.6	16.4	24.6	24.6	24.6	24.6
Connection Pipe Gas Additional Charge	oz/ft	0.2	0.2	0.22	0.215	0.125	0.5	0.5	0.5
Outer Diameter Liquid Pipe	inch	1/4	1/4	1/4	1/4	1/4	1/4	1/4"	1/4"
Outer Diameter Gas Pipe	inch	3/8	3/8	3/8	1/2	5/8	5/8	5/8"	5/8"
Max Distance Height	ft	32.8	32.8	32.8	32.8	32.8	82	32.8	32.8
Max Distance Length	ft	492	492	65.6	65.6	8	131.2	82	82.0

MODEL		TW09HQ3D6D	TW12HQ3D6D	TW18HQ3D6D	TW24HQ3D6D
TYPE		HEAT PUMP			
WiFi Kit Compatible		Yes			
SYSTEM PERFORMANCE					
Voltage/Phase/Hertz		208-230V/1/60Hz	208-230V/1/60Hz	208-230V/1/60Hz	208-230V/1/60Hz
Cooling Capacity	Btu/h	9,000	12,000	18,000	22,000
Heating Capacity	Btu/h	9,000	12,200	18,000	24,000
SEER/EER *		38/16.7	30.5/15.3	24.5/13.5	21.5/13.0
HSPF/COP		15.0/4.47	14.0/3.80	12.0/3.52	12.0/3.50
Energy Star®		Yes			
Cooling Temperature Range	F	0~129	0~129	0~129	0~129
Heating Temperature Range	F	-22~75	-22~75	-22~75	-22~75
Compressor Type		G-10 Inverter Driven 2-Stage Rotary			
INDOOR UNIT					
Air Flow (min-max)	CFM	206 - 424	235 - 500	353 - 736	383 - 824
Sound Level (min-max)	dB(A)	19 - 45	22 - 49	34 - 51	34 - 54
Dehumidification	pt/hr	1.7	3.0	3.8	4.2
Indoor Unit dimension (WxHxD)	in	39.9x12.1x8.1	39.9x12.1x8.1	44.2x13.0x9.7	42.5x12.8x9.7
Indoor Package Dimension (LxWxH)	in	42.5x14.9x12.4	42.5x14.9x12.4	47.0x16.1x13.8	47.0x16.1x13.8
Indoor Weight (Net/Gross)	lbs	29.8 / 36.4	29.8 / 37.5	36.4 / 43.0	36.4 / 43.0
OUTDOOR UNIT					
Outdoor Sound Level	dB(A)	53	53	59	59
Outdoor Unit Dimension (WxHxD)	in	35.4x23.5x14.9	35.4x23.5x14.9	38.6x31.1x16.8	38.6x31.1x16.8
Outdoor Package Dimension (LxWxH)	in	37.3x25.4x16.5	37.3x25.4x16.5	42.6x33.7x19.2	42.6x33.7x19.2
Outdoor Weight (Net/Gross)	lbs	99.2 / 105.8	99.2 / 105.8	141.1 / 152.1	147.7 / 158.8
Refrigerant / Charge 410A	oz	45.9	49.4	74.1	81.1
Coil Type		Copper/Aluminum with Acrylic Resin Coating			
INSTALLATION					
Line Set Size (Liquid - Suction)	in	1/4 - 1/2	1/4 - 1/2	1/4 - 5/8	1/4 - 5/8
Pre-Charge Length	ft	25	25	25	25
Max. Line Length	ft	49	98	131	164
Min. Elevation	ft	33	49	66	98
ELECTRICAL					
Rated Current Cooling	amp	6.2	6.5	10.8	16.4
Rated Current Heating	amp	6.9	6.9	10.8	16.4
MCA	amp	9	9	22	22
MOCP	amp	15	15	30	35
Interconnecting Wire		AWG 14/4			
Limited Warranty		10 Years on Compressor / 10 Years on Parts			

DFS MULTI

ZONES

MULTI ZONE MANHATTAN

(HMO) SERIES CONDENSER



- | | | | | | | | | | |
|----------------|----------------------|---------------------|------------------------------|-------------------|--------------------|-----------------------|--------------------|------------------------|-------------------------|
| | | | | | | | | | |
| Timer | Low Voltage Start-Up | Automatic Operation | LED Display | IR Remote Control | Multiple Speed Fan | Adjustable Airflow | Power Failure Mode | Comfortable Sleep Mode | Intelligent Pre-Heating |
| | | | | | | | | | |
| Self-Diagnosis | Auto Restart | Privacy Lock Mode | Fahrenheit ° F / Celsius ° C | Quiet Operation | I Feel | Polymeric Air Filters | Golden Fin | Wired Controller | |

FEATURES Standard Optional



WARRANTY

10 year limited parts warranty | **10 year** limited compressor warranty

- HIGH EFFICIENCY, UP TO 21 SEER2 / 10 HSPF2
- HEAT AND COOL UP TO 5 ZONES WITH ONE OUTDOOR UNIT
- 4 UNIQUE OPTIONS FOR INDOOR UNIT
- IDEAL FOR RESIDENTIAL AND COMMERCIAL SPACES

Capacity	18-42k
Voltage	230V
HSPF	10
SEER	21
Zones	2-5

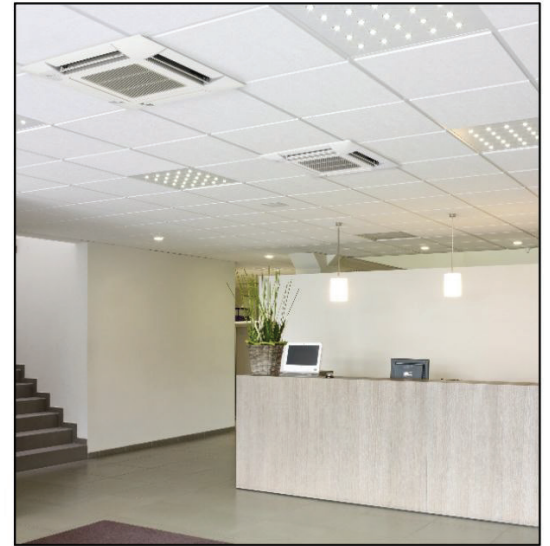
- G10 inverter technology
- Sound levels down to 53 dB(A) on outdoor unit
- Cooling range: -22°F - 118°F
- Heating range: -22°F - 75°F
- Self-diagnosis
- Indoor units powered by outdoor unit
- Intelligent defrost
- Automatic voltage adaptation
- Small "Foot Print" design

MODEL NUMBER		TM18HMO	TM24HMO	TM30HMO	TM36HMO	TM42HMO
Rated Voltage	V~	208/230	208/230	208/230	208/230	208/230
Rated Frequency	Hz	60	60	60	60	60
Phases	-	1	1	1	1	1
Cooling capacity	Btu/h	17000	23200	28400	34000	36000
Heating capacity	Btu/h	18000	24000	30000	36000	40000
Cooling Power Input	W	1420	1860	2270	2830	3000
Heating Power Input	W	1380	1800	2250	2960	3020
Cooling Current Input	A	6.28	8.00	10.07	12.56	13.31
Heating Current Input	A	6.12	7.83	9.98	13.13	13.40
Rated Power Input	W	2300/2100	3200/3400	4600/5000	4600/5200	4600/5200
Rated Current	A	10.0/9.0	14.2/15	20.41/21.74	20.41/22.61	20.41/22.61
EER	(Btu/h)/W	12.00	12.49	12.49	12.00	12.00
COP	(Btu/h)/W	13.03	13.34	13.34	12.16	13.25
SEER	-	21.00(SEER) / 21.00(SEER2)	21.00(SEER)/21.00(SEER2)	21.00(SEER) / 21.00(SEER2)	21.00(SEER)/ 21.00(SEER2)	21.00(SEER) 21.00(SEER2)
HSPF	-	10.00(HSPF) / 10.00(HSPF2)	10.00(HSPF)/10.00(HSPF2)	10.00(HSPF) / 10.00(HSPF2)	10.00(HSPF) / 10.00(HSPF2)	10.00(HSPF) 10.00(HSPF2)
L.R.A	A	25	/	/	/	/
Compressor Rated Load Amp (RLA)	A	9.95	12.1	14.25	18.2	18.4
Compressor Power Input	W	1295	1887	2047	2294	2294
Compressor Thermal Protector	-	KSD115'CHPC115/95U1	KSD115'CHPC115/95U1	KSD115'CHPC115/95U1	KSD115'CHPC115/95U1	KSD115 HPC115/95U1
Cooling Operation Ambient Temperature Range	°F	-22~118	-22~118	-22~118	-22~118	-22~118
Heating Operation Ambient Temperature Range	°F	-22~75.2	-22~75.2	-22~75.2	-22~75.2	-22~75.2
Condenser Material	-	Aluminum Fin-coppert Tube	Aluminum Fin-copper Tube	Aluminum Fin-copper Tube	Aluminum Fin-copper Tube	Aluminum Fin-copper Tube
Output of Fan Motor	W	30	60	130	130	130
Fan Motor RLA	A	/	/	/	/	/
Fan Motor Capacitor	μF	/	/	/	/	/
Air Flow Volume of Outdoor Unit	CFM	1354	2236	3413	3413	3413
Fan Type-Piece	-	Axial-flow	Axial-flow	Axial-flow	Axial-flow	Axial-flow
Moisture Protection	-	IPX4	IPX4	IPX4	IPX4	IPX4

Outdoor Unit						
Dimension (W×D×H)	inch	32 23/64×13 55/64×21 21/32	37 61/64×15 53/64×25 63/64	40 5/32×16 13/16×32 33/64	40 5/32×16 13/16×32 33/64	40 5/32×16 13/16×32 33/64
Dimension of Package (L×W×H)	inch	34 7/32×15 35/64×23 25/64	40 33/64×17 53/64×28 5/32	42 29/32×19 29/64×34 1/4	42 29/32×19 29/64×34 1/4	42 29/32×19 29/64×34 1/4
Dimension of Package(L×W×H)	inch	34 21/64×15 43/64×24 13/32	40 5/8×17 61/64×29 1/64	43 1/32×19 9/16×34 27/32	43 1/32×19 9/16×34 27/32	43 1/32×19 9/16×34 27/32
Net Weight	lb	77.2	114.7	152.1	172.0	174.2
Gross Weight	lb	82.7	124.6	167.6	187.4	189.6
Refrigerant Charge	-	R410A	R410A	R410A	R410A	R410A
Refrigerant Charge	oz	45.9	84.7	105.8	130.5	134.0
Connection Pipe Connection Method	-	Flare Connection	Flare Connection	Flare Connection	Flare Connection	Flare Connection
Not Additional Gas Connection Pipe Length	ft	32.8	131.2	131.2	131.2	164.0
Connection Pipe Gas Additional Charge	oz/ft.	0.2	0.2	0.2	0.2	0.2
Outer Diameter of Liquid Pipe1 (GREE Allocation)(Metric)	inch	1/4"	1/4"	1/4"	1/4"	1/4"
Outer Diameter of Liquid Pipe2 (GREE Allocation)(Metric)	inch	1/4"	1/4"	1/4"	1/4"	1/4"
Outer Diameter of Liquid Pipe3 (GREE Allocation)(Metric)			1/4"	1/4"	1/4"	1/4"
Outer Diameter of Liquid Pipe4 (GREE Allocation)(Metric)	inch			1/4"	1/4"	1/4"
Outer Diameter of Liquid Pipe5 (GREE Allocation)(Metric)	inch					1/4"
Outer Diameter of Gas Pipe1 (GREE Allocation)(Metric)		3/8"	3/8"	3/8"	3/8"	3/8"
Outer Diameter of Gas Pipe2 (GREE Allocation)(Metric)	ft	3/8"	3/8"	3/8"	3/8"	3/8"
Outer Diameter of Gas Pipe3 (GREE Allocation)(Metric)	ft		3/8"	3/8"	3/8"	3/8"
Outer Diameter of Gas Pipe4 (GREE Allocation)(Metric)	ft			3/8"	3/8"	3/8"
Outer Diameter of Gas Pipe5 (GREE Allocation)(Metric)	ft					3/8"
Connection Pipe Max. Height Distance(indoor and indoor)	ft	49.	49.212	82.0	82.0	82.0
Connection Pipe Max. Height Distance (indoor & outdoor & indoor up)		49.	49.212	82.0	82.0	82.0
Connection Pipe Max. Height Distance (indoor & outdoor & outdoor up)		49.2	49.212	82.0	82.0	82.0
Max. equivalent connection pipe length (outdoor to last indoor)		65.6	65.6	82.0	82.0	82.0
Connection Pipe Max. Length Distance(total length)		131.2	196.8	262.5	262.5	328.1

MULTI ZONE

INDOOR - CEILING CASSETTES



Timer



High Efficiency



Comprehensive Protection



Easier Maintainability



Intelligent Defrosting



Compact Design



Inner Groove Copper



Turbo Button



Wide Operation Range



Self-Diagnosis



Memory Function



Lock



Low Voltage Range



Wide Voltage Range



Weekly Timer



Centralized Control



Long Distance Monitoring



Wired Controller

FEATURES

Standard

Optional



WARRANTY

10 year

limited parts warranty

10 year

limited compressor warranty

TOSOT's ceiling cassette will inconspicuously provide quiet performance through innovative design. The ceiling cassette is suitable for any room and can be easily installed in a suspended ceiling with only a discreet decorative discharge grille visible.

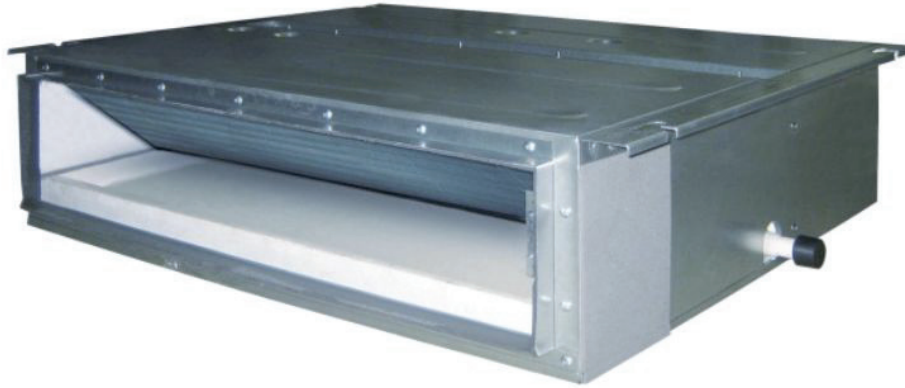
Capacity	12k-24k
Voltage	230V

- 4-Way discharge air
- Multiple fan speeds
- Swing louver control
- Automatic voltage adaption
- Sentry float switch
- Internal condensate drain pump
- Decorative discharge air grille (sold separately)
- Remote & wired controller options

MULTI-ZONE - CASSETTES	TM12HBKDI - TOSOT 12K Cassette	TM18HBKDI - TOSOT 18K Cassette	TM24HBKDI - TOSOT 24K Cassette
GENERAL FEATURES			
-Quiet Operation -Multi-Speed Fan			
-4-way Discharge Air			
-Internal Condensate Drain Pump			
-Swing Louver			
-Both Wireless & Wired Remote Controllers			
-Power Failure Recovery			
-Sentry Condensate Overflow Protection			
-Decorative Grille (Sold Separately)			
-Limited 10yr. Parts/Compressor Warranty			
System Ratings			
Cooling*			
Rated Capacity	12,000 BTU/H	14,400 BTU/H	22,800 BTU/H
Heating*			
Rated Capacity	13,000 BTU/H	16,000 BTU/H	27,400 BTU/H
Sound Pressure (Hi/Lo)**			
Cooling	46/32 dbA	46/42 dbA	49/45 dbA
Heating	46/32 dbA	46/42 dbA	49/45 dbA
Air Flow (min/max)			
Indoor Fan	265/353 CFM	265/353 CFM	500/694 CFM
Electrical Ratings			
FLA	0.2 A	0.2 A	0.4 A
Power Supply			
Normal Operational Voltage	208/230 V, 1 Phase, 60 Hz	208/230 V, 1 Phase, 60 Hz	208/230 V, 1 Phase, 60 Hz
Voltage Range	187 - 253 V	187 - 253 V	187 - 253 V
MCA	1.0 A	1.0 A	1.0 A
Interconnecting Cable Wire Size	14-4 AWG	14-4 AWG	14-4 AWG
Units Specification & Data			
Wired Controller	XK-19	XK-19	XK-19
Air Filter	Netted polypropylene	Netted polypropylene	Netted polypropylene
Condensate Drain Lift (Height)	12-in 305-mm	12-in 305-mm	12-in 305-mm
Drain Size (OD)	1.2-in 31-mm	1.2-in 31-mm	1.2-in 31-mm
Refrigerant Piping Data			
Refrigerant Type	R410A	R410A	R410A
Gas Pipe Size (OD)	3/8-in	1/2-in	5/8-in
Liquid Pipe Size (OD)	1/4-in	1/4-in	3/8-in
Connection Method	Flared	Flared	Flared

MULTI ZONE

INDOOR - SLIM/CONCEALED DUCTS



-  Timer
-  High Efficiency
-  Comprehensive Protection
-  Easier Maintainability
-  Intelligent Defrosting
-  Compact Design
-  Inner Groove Copper
-  Turbo Button
-  Wide Operation Range
-  Self-Diagnosis
-  Memory Function
-  Lock
-  Low Voltage Range
-  Wide Voltage Range
-  Weekly Timer
-  Centralized Control
-  Long Distance Monitoring
-  Wired Controller

FEATURES ○ Standard ● Optional



WARRANTY

10 year limited parts warranty | **10 year** limited compressor warranty

Compact and powerful, the high static slim duct offers the ultimate in flexibility and discretion. Concealed above a suspended ceiling or within open closet spaces to deliver conditioned air via extended ducting and suitable ceiling or wall grilles.

Capacity	9k-24k
Voltage	230V

- High static pressure capability
- Slim line construction
- Outside air capability
- Cleanable air filter
- Internal condensate pump
- Sentry float switch
- Remote & wired controller options
- I-Feel function

MULTI ZONE - SLIM DUCTS	TM09HFDI	TM12HFDI	TM18HFDI	TM24HFDI
-------------------------	----------	----------	----------	----------

GENERAL FEATURES

-Quiet Operation -Multi-Speed Fan
-Medium Static Pressure Capability
-Slim Line Construction 8" high
-Internal Condensate Drain Pump
-Flexible Return Air From Bottom Or Rear
-XK-19 Wired Controllers
-Wireless Remote Controllers
-Sentry Condensate Overflow Protection
-Limited 10yr. Parts/Compressor Warranty

System Ratings

Cooling*					
Rated Capacity	8,500 BTU/H	11,900 BTU/H	15,300 BTU/H	23,800 BTU/H	23,800 BTU/H
Heating*					
Rated Capacity	9,500 BTU/H	13,100 BTU/H	18,700 BTU/H	27,400 BTU/H	27,400 BTU/H
Sound Pressure (Hi/Lo)**					
Cooling	37/31 dbA	39/32 dbA	41/33 dbA	42/34 dbA	42/34 dbA
Heating	37/31 dbA	39/32 dbA	41/33 dbA	42/34 dbA	42/34 dbA
Air Flow (min/max)					
Indoor Fan	147/265 CFM	177/294 CFM	147/265 CFM	324/589 CFM	324/589 CFM
Ext Static Pressure (max/min)	0.040/0.025 inch wg	0.04/0.03 inch wg	0.040/0.032 inch wg	0.040/0.035 inch wg	0.040/0.035 inch wg

System Ratings

FLA	0.35 A	0.35 A	0.43 A	0.54 A	0.54 A
Power Supply					
Normal Operational Voltage	208/230 V, 1 Phase, 60 Hz	208/230 V, 1 Phase, 60 Hz	208/230 V, 1 Phase, 60 Hz	208/230 V, 1 Phase, 60 Hz	208/230 V, 1 Phase, 60 Hz
Voltage Range	187 - 253 V	187 - 253 V	187 - 253 V	187 - 253 V	187 - 253 V
MCA	1.0 A	1.0 A	1.0 A	1.0 A	1.0 A
Interconnecting Cable Wire Size	14-4 AWG	14-4 AWG	14-4 AWG	14-4 AWG	14-4 AWG

System Ratings

Wired Controller	XK-19	XK-19	XK-19	XK-19	XK-19
Condensate Drain Lift (Height)	18-in 457-mm	18-in 457-mm	18-in 457-mm	18-in 457-mm	18-in 457-mm
Drain Size (OD)	1.0-in 26-mm	1.0-in 26-mm	1.0-in 26-mm	1.0-in 26-mm	1.0-in 26-mm

System Ratings

Refrigerant Type	R410A	R410A	R410A	R410A	R410A
Gas Pipe Size (OD)	3/8-in	3/8-in	1/2-in	5/8-in	5/8-in
Liquid Pipe Size (OD)	1/4-in	1/4-in	1/4-in	3/8-in	3/8-in
Connection Method	Flared	Flared	Flared	Flared	Flared

MULTI ZONE

INDOOR - MINI-CONSOLES



Timer



High Efficiency



Comprehensive Protection



Easier Maintainability



Intelligent Defrosting



Compact Design



Inner Groove Copper



Turbo Button



Wide Operation Range



Self-Diagnosis



Memory Function



Lock



Low Voltage Range



Wide Voltage Range



Weekly Timer



Centralized Control



Long Distance Monitoring



Wired Controller

FEATURES

Standard

Optional



WARRANTY

10 year

limited parts warranty

10 year

limited compressor warranty

TOSOT's Mini Console indoor units are aesthetically pleasing and the perfect size for any room. It can be mounted as low as six inches above the floor and has front panel access to the filter for ease of cleaning.

Capacity	9-18k
Voltage	230V

- 4-Way discharge air
- Multiple fan speeds
- Comfortable sleep mode
- Swing louver

- Cleanable air filter
- Dry coil mode for anti-mildew protection
- IR remote control included

MULTI ZONE - MINI CONSOLE	TM09HEDI - Mini Console	TM12HEDI - TOSOT Mini Console	TM18HEDI - 18K - Mini Console
GENERAL FEATURES			
-Quiet Operation -Multi-Speed Fan			
-Swing Louvers			
-Wireless Remote Controllers			
-Remote Control Lockout			
-Limited 10yr. Parts/Coompressor Warranty			
System Ratings			
Cooling*			
Rated Capacity	8,874 BTU/H	11,946 BTU/H	18,089 BTU/H
Heating*	9,556 BTU/H		
Rated Capacity		12,969 BTU/H	19,795 BTU/H
Sound Pressure (Hi/Lo)**	40/25 dbA		
Cooling	40/25 dbA	42/27 dbA	48/32 dbA
Heating		42/27 dbA	48/32 dbA
Air Flow (min/max)	294 CFM		
Indoor Fan		353 CFM	353 CFM
Electrical Ratings			
Fan Motor			
Output Power	30 W	30 W	30 W
FLA	0.36 A	0.36 A	0.36 A
Power Supply			
Normal Operational Voltage	208/230 V, 1 Phase, 60 Hz	208/230 V, 1 Phase, 60 Hz	208/230 V, 1 Phase, 60 Hz
Voltage Range	187 - 253 V	187 - 253 V	187 - 253 V
MCA	1.0 A	1.0 A	1.0 A
Interconnecting Cable Wire Size	14-4 AWG	14-4 AWG	14-4 AWG
System Ratings Physical Specifications			
Unit Dimensions (LxHxD)	27.5x24.0x8.5-in	27.5x24.0x8.5-in	27.5x24.0x8.5-in
Weight (Net/Shipping)	33/40 LBS	33/40 LBS	33/40 LBS
Drain Size (OD)	0.67-in 17-mm	0.67-in 17-mm	0.67-in 17-mm
Refrigerant Piping Data			
Refrigerant Type	R410A	R410A	R410A
Gas Pipe Size (OD)	3/8-in	3/8-in	1/2-in
Liquid Pipe Size (OD)	1/4-in	1/4-in	1/4-in
Connection Method	Flared	Flared	Flared

MULTI ZONE

INDOOR - FLOOR/CEILING CONSOLES



Timer



High Efficiency



Comprehensive Protection



Easier Maintainability



Intelligent Defrosting



Compact Design



Inner Groove Copper



Turbo Button



Wide Operation Range



Self-Diagnosis



Memory Function



Lock



Low Voltage Range



Wide Voltage Range



Weekly Timer



Centralized Control



Long Distance Monitoring



Wired Controller

FEATURES

Standard

Optional



WARRANTY

10 year

limited parts warranty

10 year

limited compressor warranty

Our universal floor/ceiling indoor units are designed to be suspended from a ceiling or mounted low on a wall. The slender and lightweight design is perfect for restaurants or hallways where wall space is limited.

Capacity	9-24k
Voltage	230V

- 4-Way discharge air
- Multiple fan speeds
- Sleep function
- Swing louver control

- Washable, polymeric air filters
- Privacy lock mode
- Automatic voltage adaption
- Remote & wired controller options

MULTI-ZONE INDOOR - FLOOR/CEILING CONSOLES	TM09HTDI Floor Ceiling Submittal	TM12HTDI Floor Ceiling Submittal	TM18HTDI Floor Ceiling Submittal	TM24HTDI Floor Ceiling Submittal
--	----------------------------------	----------------------------------	----------------------------------	----------------------------------

GENERAL FEATURES

GENERAL FEATURES

-Floor Stand or Ceiling Mount

-Quiet Operation -Multi-Speed Fan

-4-way Discharge Air Flow

-Swing Louvers

-Remote Control Lockout

-Wireless Remote Controllers

-XK-19 Wired & Wireless Remote Controllers

-Limited 10yr. Parts/Compressor Warranty

System Ratings

Cooling*				
Rated Capacity	8,500 BTU/H	11,900 BTU/H	17,000 BTU/H	22,800 BTU/H
Heating*				
Rated Capacity	9,500 BTU/H	13,100 BTU/H	18,700 BTU/H	27,300 BTU/H
Sound Pressure (Hi/Lo)**				
Cooling	40/36 dbA	40/36 dbA	45/40 dbA	48/44 dbA
Heating	40/36 dbA	40/36 dbA	45/40 dbA	48/44 dbA
Air Flow (min/max)				
Indoor Fan	265/383 CFM	265/383 CFM	294/559 CFM	412/736 CFM

Electrical Ratings

FLA	0.28 A	0.28 A	0.56 A	0.63 A
Power Supply				
Normal Operational Voltage	208/230 V, 1 Phase, 60 Hz	208/230 V, 1 Phase, 60 Hz	208/230 V, 1 Phase, 60 Hz	208/230 V, 1 Phase, 60 Hz
Voltage Range	187 - 253 V	187 - 253 V	187 - 253 V	187 - 253 V
MCA	1.0 A	1.0 A	1.0 A	1.0 A
Interconnecting Cable Wire Size	14-4 AWG	14-4 AWG	14-4 AWG	14-4 AWG

System Ratings Physical Specifications

Unit Dimensions (LxHxD)	48.0 x 27.5 x 8.9 -in	48.0 x 27.5 x 8.9 -in	48.0 x 27.5 x 8.9 -in	48.0 x 27.5 x 8.9 -in
Weight (Net/Shipping)	88/110 LBS	88/110 LBS	88/110 LBS	100/120 LBS
Drain Size (OD)	0.67-in 17-mm	0.67-in 17-mm	0.67-in 17-mm	0.67-in 17-mm

Refrigerant Piping Data

Refrigerant Type	R410A	R410A	R410A	R410A
Gas Pipe Size (OD)	3/8-in	3/8-in	1/2-in	5/8-in
Liquid Pipe Size (OD)	1/4-in	1/4-in	1/4-in	3/8-in
Connection Method	Flared	Flared	Flared	Flared

MULTI ZONE

INDOOR - WALL MOUNTED



Timer



High Efficiency



Comprehensive Protection



Easier Maintainability



Intelligent Defrosting



Compact Design



Inner Groove Copper



Turbo Button



Wide Operation Range



Self-Diagnosis



Memory Function



Lock



Low Voltage Range



Wide Voltage Range



Weekly Timer



Centralized Control



Long Distance Monitoring



Wired Controller

FEATURES

Standard

Optional



WARRANTY

10 year

limited parts warranty

10 year

limited compressor warranty

Capacity	9-24k
Voltage	230V

MULTI-ZONE INDOOR - WALL MOUNTED		TWH09AG25A2DI	TWH12AG25A2DI	TWH18AG25A2DI	TWH24AG25A2DI
System Type		HEAT PUMP			
System Type					
Cooling Capacity - Nominal	Btu/h	9100	12000	18000	22000
Heating Capacity - Nominal	Btu/h	10500	12000	18000	24000
Air Flow (Min-Max)	CFM	106 - 353	212 - 400	324 - 589	383-736
Sound Pressure Level (Cooling/Heating)	dB(A)	22-40/ 25-41	27-43/28-44	29-49 /28-49	34-52/ 34-52
Dehumidification	pt/hr	1.69	2.96	3.8	5.072
Unit Dimension (WxHxD)	in	32 31/64x11 17/32x7 23/32	32 31/64x11 17/32x7 23/32	38 21/32x12 1/4x8 45/64	42 21/64x13 7/64x9 11/16
Package Dimension (WxHxD)	in	34 29/64x14 3/8x10 35/64	34 29/64x14 3/8x10 35/64	41 7/64x15 5/32x11 11/16	44 39/64x16 19/64x13 7/64
Weight (Net/Gross)	lbs	20.9 / 25.4	20.9 / 25.4	28.7 / 35.3	35.3/41.9
Line Set Size (Liquid - Gas)	in	1/4-3/8	1/4-1/2	1/4-5/8	1/4-5/8
Power Supply	208-230 / 1Ph / 60Hz (Powered by Outdoor Unit)				

CENTRAL D HEAT PUMP

DUCTED
P SYSTEMS

UNIX UNITARY CENTRAL DUCTED HEAT PUMP SYSTEMS



Timer



High Efficiency



Comprehensive Protection



Easier Maintainability



Intelligent Defrosting



Compact Design



Inner Groove Copper



Turbo Button



Wide Operation Range



Self-Diagnosis



Memory Function



Lock



Low Voltage Range



Wide Voltage Range



Weekly Timer



Centralized Control



Long Distance Monitoring



Wired Controller

FEATURES

○ Standard

● Optional



WARRANTY

10 year

limited parts warranty

10 year

limited compressor warranty

- Outdoor unit efficiency is up to 20 SEER & 10.5 HSPF.
- Multi-position Air Handlers.
- Adopts the two-stage compression EVI technology, small performance decline at extremely hot or cold area.
- Compatible with most standard 24V thermostat (eg. Nest, Ecobee).
- D.C Inverter technology, quieter, more comfortable.
- Installation similar to traditional central ducted systems.

Model 1	TU36-24ADU (2-3 Ton Convertible)
Model 2	TU60-24ADU (4-5 Ton Convertible)

GENERAL FEATURES

-Side Discharge Outdoor Unit
-Zero Lot Line Design
-Match with Gree or Competitive Indoor Unit
-Designed for New Construction or Replacement Market
-Quiet Outdoor Operation - 55 dB(A)
-24VAC Thermostat Compatible
-Acrylic Resin/Anti-Corrosion Fin Coating
10 yr. Limited Compressor & Parts Warranty (Residential Only)

SYSTEM RATINGS

COOLING		COOLING	
RATED CAPACITY (BTU/H)	36000	RATED CAPACITY (BTU/H)	54000
CAPACITY RANGE (BTU/H)	18000-37000	CAPACITY RANGE (BTU/H)	35000-54000
COOLING POWER INPUT (W)	3270	COOLING POWER INPUT (W)	5140
SEER	18	SEER	17
EER	11	EER	10.5
HEATING		HEATING	
RATED CAPACITY AT 47° F (BTU/H)	36000	RATED CAPACITY AT 47° F (BTU/H)	54000
CAPACITY RANGE (BTU/H)	18000-38000	CAPACITY RANGE (BTU/H)	35000-60000
POWER INPUT (W)	3010	POWER INPUT (W)	4590
HSPF	10	HSPF	10
COP	3.5	COP	3.45
HEATING		HEATING	
RATED CAPACITY AT 17° F (BTU/H)	24400	RATED CAPACITY AT 17° F (BTU/H)	38000
POWER INPUT (W)	2860	POWER INPUT (W)	4230
COP	2.5	COP	2.63
OPERATING RANGE		OPERATING RANGE	
COOLING (MAX)	129°F (46°C)	COOLING (MAX)	129°F (46°C)
(MIN)	5°F (-18°C)	(MIN)	5°F (-18°C)
HEATING (MAX)	75°F (24°C)	HEATING (MAX)	75°F (24°C)
(MIN)	-22°F (-30°C)	(MIN)	-22°F (-30°C)
REFRIGERANT PIPING DATA		REFRIGERANT PIPING DATA	
GAS PIPE SIZE-OD (IN)	3/4	GAS PIPE SIZE-OD (IN)	3/4
LIQUID PIPE SIZE -OD (IN)	3/8	LIQUID PIPE SIZE -OD (IN)	3/8
CONNECTION METHOD	FLARED	CONNECTION METHOD	FLARED
FACTORY CHARGE (OZ)	148.8	FACTORY CHARGE (OZ)	220.8
ADDITIONAL CHARGE (OZ/FT)	0.3	ADDITIONAL CHARGE (OZ/FT)	0.3
FACTORY CHARGE LENGTH (FT)	25	FACTORY CHARGE LENGTH (FT)	25
MAX REFRIGERANT PIPE LENGTH (FT)	164	MAX REFRIGERANT PIPE LENGTH (FT)	98
MIN REFRIGERANT PIPE LENGTH (FT)	10	MIN REFRIGERANT PIPE LENGTH (FT)	10
MAX REFRIGERANT PIPE ELEVATION (FT)	49	MAX REFRIGERANT PIPE ELEVATION (FT)	49
INDOOR UNIT DATA			
FAN MOTOR		FAN MOTOR	
OUTPUT POWER (HP)	1/2	OUTPUT POWER (HP)	1
FLA (A)	2.1	FLA (A)	3.2

INDOOR UNIT DATA			
AIRFLOW		AIRFLOW	
CFM	1000	CFM	1600
RATED EXTERNAL STATIC PRESSURE	0.15	RATED EXTERNAL STATIC PRESSURE	0.2
EXTERNAL STATIC PRESSURE RANGE (INWG)	0-4	EXTERNAL STATIC PRESSURE RANGE (INWG)	0-4
SOUND PRESSURE LEVEL (DB(A))	47	SOUND PRESSURE LEVEL (DB(A))	51
DEHUMIDICATION (PT/HR)	6	DEHUMIDICATION (PT/HR)	7
POWER SUPPLY (DEDICATED CIRCUIT: SIZE PER LOCAL CODE)		POWER SUPPLY (DEDICATED CIRCUIT: SIZE PER LOCAL CODE)	
NORMAL OPERATIONAL VOLTAGE	208/230 V, 1 PHASE, 60 HZ	NORMAL OPERATIONAL VOLTAGE	208/230 V, 1 PHASE, 60 HZ
VOLTAGE RANGE	187-253	VOLTAGE RANGE	187-253 V
MCA (A)	4	MCA (A)	4
MOCP/BREAKER SIZE (A)	15	MOCP/BREAKER SIZE (A)	15
OUTDOOR UNIT DATA			
COMPRESSOR		COMPRESSOR	
DC INVERTER DRIVEN ROTARY		DC INVERTER DRIVEN ROTARY	
RLA (A)	19	RLA (A)	19
REFRIGERANT TYPE	R410A	REFRIGERANT TYPE	R410A
FAN MOTOR		FAN MOTOR	
OUTPUT POWER (HP)	1/5	OUTPUT POWER (HP)	1/5X2
FLA (A)	1.5	FLA (A)	1.5X2
CRANKCASE HEATER (W)	40	CRANKCASE HEATER (W)	40
SOUND PRESSURE LEVEL - DB(A)	55	SOUND PRESSURE LEVEL - DB(A)	58
POWER SUPPLY (DEDICATED CIRCUIT: SIZE PER LOCAL CODE)		POWER SUPPLY (DEDICATED CIRCUIT: SIZE PER LOCAL CODE)	
NORMAL OPERATIONAL VOLTAGE	208/230 V, 1 PHASE, 60 HZ	NORMAL OPERATIONAL VOLTAGE	208/230 V, 1 PHASE, 60 HZ
VOLTAGE RANGE (V)	187-253	VOLTAGE RANGE (V)	187-253
MCA (A)	24	MCA (A)	35
MOCP/BREAKER SIZE (A)	35	MOCP/BREAKER SIZE (A)	45
SYSTEM FEATURES			
COMPRESSOR	INVERTER	COMPRESSOR	INVERTER
ULTRA LOW FREQUENCY TORQUE CONTROL	YES	ULTRA LOW FREQUENCY TORQUE CONTROL	YES
POWER FACTOR CORRECTION	YES	POWER FACTOR CORRECTION	YES
COMPRESSOR TYPE	ROTARY	COMPRESSOR TYPE	ROTARY
REFRIGERANT TYPE	R410A	REFRIGERANT TYPE	R410A
OUTDOOR ELECTRONIC EXPANSION VALVE (EEV)	YES	OUTDOOR ELECTRONIC EXPANSION VALVE (EEV)	YES
INDOOR TXV CONTROL	YES	INDOOR TXV CONTROL	YES
BASEPAN WITH ELECTRIC HEATER	YES	BASEPAN WITH ELECTRIC HEATER	YES
COMPRESSOR WITH ELECTRIC HEATER	YES	COMPRESSOR WITH ELECTRIC HEATER	YES
OUTDOOR FIN COATING	ACRYLIC RESIN	OUTDOOR FIN COATING	ACRYLIC RESIN
INTELLIGENT DEFROSTING	YES	INTELLIGENT DEFROSTING	YES
INTELLIGENT PREHEATING	YES	INTELLIGENT PREHEATING	YES
LOW VOLTAGE STARTUP	YES	LOW VOLTAGE STARTUP	YES
MEMORY/POWER FAILURE RECOVERY	YES	MEMORY/POWER FAILURE RECOVERY	YES
SELF DIAGNOSIS	YES	SELF DIAGNOSIS	YES
LOW AMBIENT COOLING	YES	LOW AMBIENT COOLING	YES
24VAC THERMOSTAT COMPATIBLE	YES	24VAC THERMOSTAT COMPATIBLE	YES
INDOOR FAN TYPE	CENTRIFUGAL	INDOOR FAN TYPE	CENTRIFUGAL
MULTI FAN SPEEDS	3 SPEEDS	MULTI FAN SPEEDS	3 SPEEDS
AUXILIARY ELECTRICAL HEATER	OPTIONAL	AUXILIARY ELECTRICAL HEATER	OPTIONAL

PRODUCT WARRANTY

10 YEARS WARRANTY ON
PARTS & COMPRESSOR

THANK YOU!



ISO 9001 Quality System Certificate



ISO 14001 Environment Management System Certificate



ISO 18001 Occupation Healthy Safety System Certificate



Canadian CSA Certificate



German TÜV Certificate



3C Certificate



European Communities CE Certificate



American UL Certificate



Russian Safety Certificate



EQM



SASO Certificate



Mexico NOM Safety Certificate



German GS Certificate



European EMC Certificate



Argentina Safe Certificate



China EMC Certificate



Hongkong Energy-saving Certificate



Hongkong Safety Certificate



Australian SAA Safe Certificate



Australia SAA Certificate



CQC Certificate



America ETL Certificate



Canadian ETL Certificate



Thailand TIS Certificate

TOSOT

CONTACT INFO

For more information, please visit
www.TosotComfort.com

For additional inquiries, please email
hi@TosotComfort.com