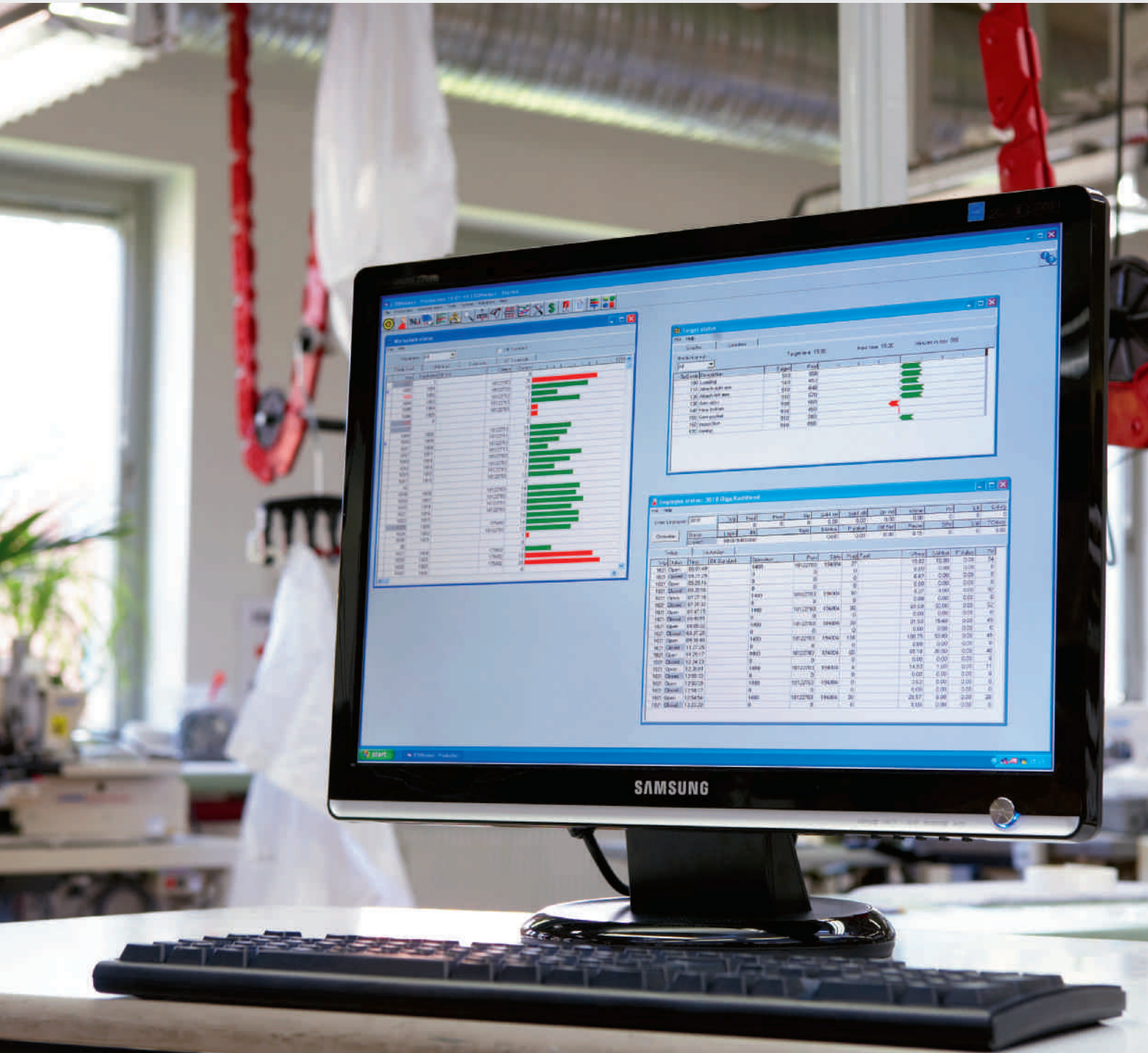


ETON *select*

THE MODULE BASED SOFTWARE



THE NEW MODULE BASED SOFTWARE



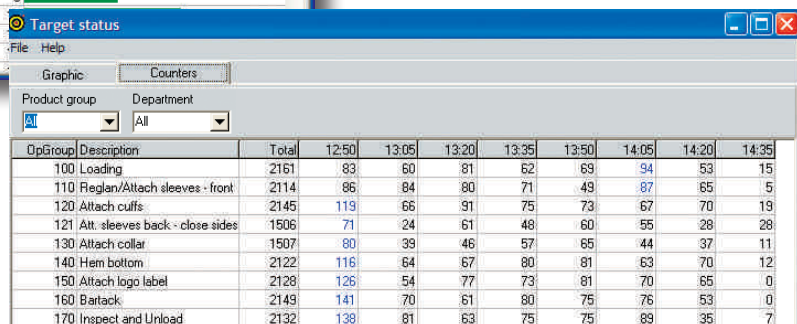
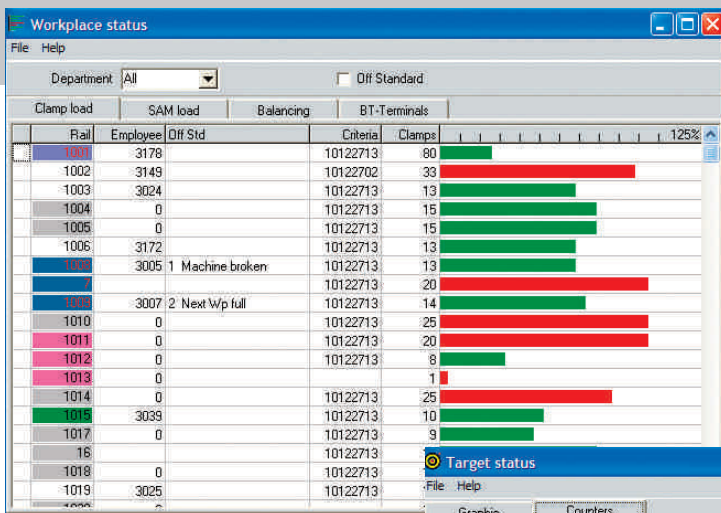
ETONselect is a new generation of module based software from Eton Systems. A **real-time data collection and information system** that continuously accumulates, processes and clearly presents powerful production information to supervisors, quality control personnel and management.

The ETONselect standard module is **extremely powerful, user friendly** and a perfect solution for most users. However, used in combination with available optional additional modules, ETONselect can be **tailored for your specific needs** and unique production requirements. ETONselect was carefully designed to help management control and plan production, **maximize your output** and minimize waste.

It also allows users to extract critical production information in **real-time** or as **periodical reports**, giving you total control of what information you receive from the system at any moment in time.

Even though it is very user friendly, easy to understand and quick to use, each module is implemented in conjunction with in-depth user training.

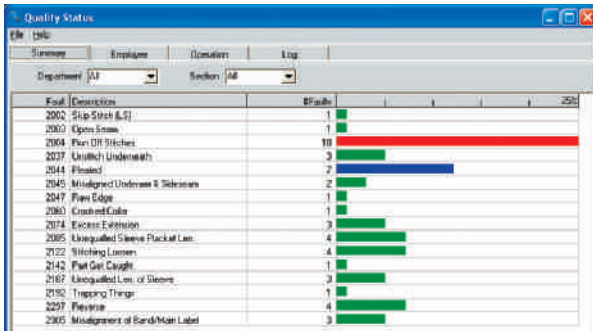
Training and transformation of knowledge in combination with top of the line hardware and software is what makes ETONselect the right choice both now and in the future.



STANDARD MODULE

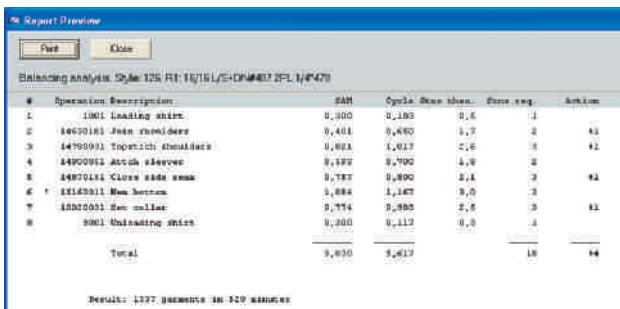


ETONselect is designed to meet the needs of the majority of our customers worldwide. Production data is important, not only for supervisors and plant management on the production floor, but also for assisting upper management with **strategic management decisions**. ETONselect is equipped with a very **powerful Graphical User Interface (GUI)** that has proven to be **very easy to understand** and extremely well adapted to a production environment.



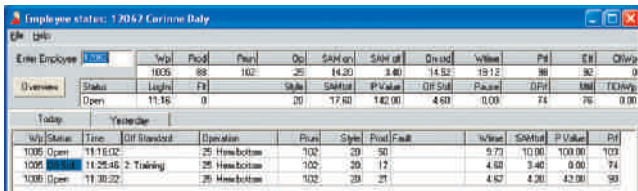
Advanced Quality Control

ETONselect makes the tiresome task of dealing with quality issues simple. Users can **define their own quality defect codes**, assign those codes to faults and **return work automatically** to the operator that created the defect. Detailed data is retained by the system for each operator and order number. Dealing with mountains of paperwork is a thing of the past with ETONselect.



Balancing analysis

A powerful line balancing analysis tool is included in the standard package. Supervisors can see the effects of opening and/or closing stations to fix imperfect balancing situations and keep their line running smoothly.



Efficiency/Performance

ETONselect collects data for all employees in real-time and automatically calculates and displays both efficiency and performance. This information is essential for production planning to **maximize production output**.

Interfaces

The interface support within ETONselect is extensive. Standard interface files can be used to **import and export production and payroll data** to virtually any software application capable of conforming to our file specifications. Specific information as to the file structure, field lengths etc. are available upon request.

Standard features in ETONselect

Operation lists

- SAM / Piece rate
- Efficiency / Performance
- Advanced quality control
- Daily & Periodical reports
- Off standards
- Target by department
- Pause / Close / Off standard by department
- Clock Terminal
- Style archive

Production information

- Employee
- Prun / Order
- Operation / SAM / Piece rate
- Operation Group
- Product Group
- SKU (Stock Keeping Unit)
- Quick route setup
- Balancing analysis

Interfaces

- GSD
- Employee info file
- Transfer files
- Real time scrips
- Import / Export
- Scanners

Advanced addressing

- Even split
- Criteria split
- Wafterfall
- Addressing by line

NETWORK MODULE

ETONselect's optional network module allows multiple people and computers to access ETONselect data. While the Standard module does not support this, the Network module enables engineering, payroll, supervisors and others to view real-time data simultaneously from the convenience of their workplace.



BUNDLE TRACKING MODULE

The optional bundle tracking module allows Eton terminals to be set up at as many workstations as necessary to do such things as cutting, bundling, small part preparation and more. Working in a traditional bundle environment has never been easier. The bundle tracking option makes it possible to include all employees and operations into one system.

With ETONselect bundle tracking the need for a second data collection system is also a thing of the past.

All your production information is in one place, ETONselect.

When all bundle operations are completed the bundle **information is transferred** to the product carrier at the loading operation. When a product is unloaded from the system Bundle tracking can also be used to control remaining operations.

Bundle tracking has two alternatives:

- **Wall to Wall** solution meaning that each operator has their own terminal.
- **Key operation** solution meaning that only some operators has a terminal for registration.

Quality control can be performed as Roving inspection or Line inspection. Line inspection means that a specific Bundle tracking terminal will be dedicated to perform inspection, and all work passes through, i.e the Bundle inspection is a part of your route. Roving inspection is a type of Sampling inspection, where the examiners patrol the production floor, and manually connect their terminal to the bundle tracking terminal when a fault is discovered.

With bundle tracking **full traceability** is a reality both on and off the Eton System.

BUFFER MODULE

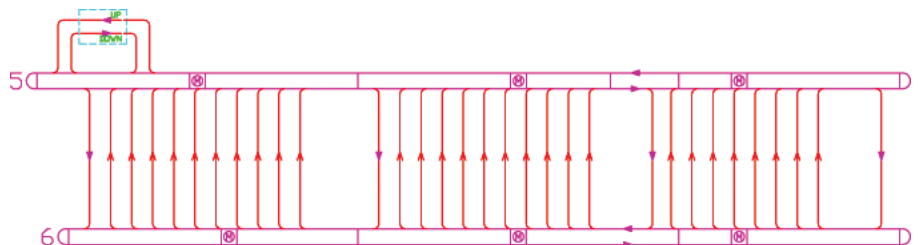


Call	Criteria	Component Code	Queue	Called	Operation	Size	Status	Priority	Destination
2003	@ 705201	Trousers M101	24	27	204	Trousers M101	42 24 / 24		
2008	@ 705202	Trousers M101	24	27	204	Trousers M101	43 24 / 24		
2001	@ 705203	Trousers M101	24	27	204	Trousers M101	40 24 / 24		
2002	@ 705204	Trousers M101	15	27	204	Trousers M101	41 15 / 15		
3003	@ 705301	Trousers M909	1	1216:00	103	Trousers M909	45 1 / 24		
3004	@ 705305	Trousers M909	24	1216:00	103	Trousers M909	46 24 / 24		
2001	@ 705206	Trousers M909	4	1216:00	103	Trousers M909	3 4 / 4		
2001	@ 705250	Trousers M221	3	1216:00	052	Trousers M221	40 2 / 24		
2002	@ 705201	Trousers M221	24	1216:00	052	Trousers M221	43 24 / 24		
2003	@ 705252	Trousers M221	24	1216:00	052	Trousers M221	55 24 / 24		
2004	@ 705253	Trousers M221	23	1216:00	052	Trousers M221	23 / 24		
2001	@ 705254	Trousers M221	20	1216:00	052	Trousers M221	47 24 / 24		
2002	@ 705254	Trousers M221	4	1216:00	052	Trousers M221	47		
2002	@ 705255	Trousers M221	15	1216:00	052	Trousers M221	50 24 / 24		
2004	@ 705255	Trousers M221	3	1216:00	052	Trousers M221	50		
2004	@ 705256	Trousers M221	15	1216:00	052	Trousers M221	58 15 / 15		

The ETONselect buffer module enables you to set up and control buffers on the Eton line. Buffers can be an invaluable tool to **balance critical areas**, store and sort hangers by criteria prior to unloading etc. Many different types of buffers are possible.

Retrieval of products from the buffers can be done via Automatic or Manual calls.

With our experience we can recommend and design one or more buffers to fill your specific requirements.



ADVANCE SOFTWARE MODULE



To increase output from the system even further, give your production management a second boost 6-18 months after the initial installation by adding on the advance software module and the associated training program.

The advanced module in ETONselect gives **balancing assistance** to the supervisors. ETONselect continuously gathers skills history information on every operator and includes this information in what-if projections. These features are powerful tools to help supervisors **maximize the utilizations** of each employee.

ETONselect **highlights** where production is too fast and also to slow. With this **real time information** the supervisor has the facts on which operators are best to moved to get the production back on track.

The option to **password protect** gives the advantage of limiting access to different parts of ETONselect.

Operation group addressing enables you to address on operation groups rather than on operations. Using the operation group option in the advanced module, one style can be changed and it will **automatically change** related styles accordingly, saving a substantial amount of work for the user that has **frequent style changes**.

- Balancing Tool
- Work in Progress
- Balancing Analysis
- Large format screen display
- Skills information
- Operation Group addressing

Skill history

Employee	Name	OpGroup	Description	Week #	Skill Prf	Skill Fil
3005	Victoria Andersson	120	Attach cuffs	0723	98	0
3007	Theresa Johnsson	110	Reglan/Attach sleeves - f	0723	118	0
3017	Emma Smith	121	Att. sleeves back - close	0723	154	0
3017	Emma Smith	130	Attach collar	0723	134	0
3030	Jane King	120	Attach cuffs	0723	111	0
3031	Sara Timson	110	Re			
3036	Renata Karim	120	Att			
3039	Anna Collin	121	Att			
3058	Cindy Lopez	110	Re			
3064	Lisa Williams	160	Bar			
3123	Marta Rooney	150	Att			
3124	Audrey Brown	140	He			
3133	Elenora Jones	130	Att			
3145	Carla Moore	120	Att			
3164	Rita Harris	150	Att			
3176	Vilma Hill	140	He			
3181	Wanda Parker	160	Bar			

Target status

Product group: [A] Target time: 12:15 Next time: 12:30 Minutes in day: 450

OpGroup	Description	Target	Prod
10	Loading	52	99
20	Attaching sleeves	52	94
25	Hem bottom	52	95
30	Topstich shoulders	52	80
40	Inspection	52	95
60	Unload	52	90

Balancing tool - Who else can do op.gr...

OpGroup: 120, Attach cuffs

Employee	Skill Prf	Wp	OpGroup	Prf	Target
3005	98	1008	180	98	

Target by department
It is possible to set up different production output numbers – targets, for different ETON production lines or departments. Giving the user **total control** if the current performance in the end will **meet the targets**. This is very useful if different products are being produced on different ETON production lines, since the output could vary substantially depending on products.

ETON ONLINE MODULE



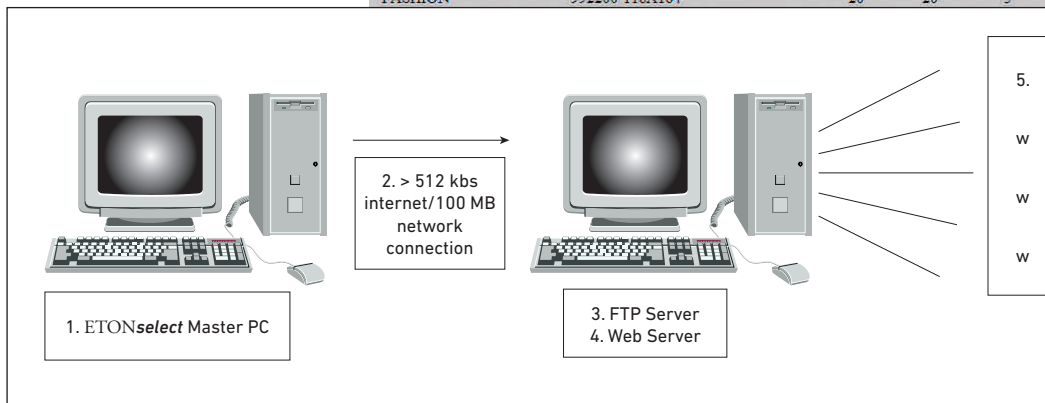
With the web-based interface the ability now exists to view production via the Internet from remote locations. The information is always there whenever or wherever you need it.

Order status, productivity, quality and technical information is available.

With the Eton Online Module information from your Eton System can be made available over and in-house intranet or online.

Customer service might find this information invaluable when dealing with order status inquiries. The only thing that is needed on your end is a high speed internet connection at the master computer. ETONselect will take care of the rest.

Productivity						
System	Prun Order	Quantity	Loaded	Unloaded	Checkpoint 1	Checkpoint 2
SYSTEMS	919116 118A165	900	900	875	752	701
SYSTEMS	919117 9998-JA-54	900	900	241	154	61
SYSTEMS	950701 118A165	900	164	0	62	13
SYSTEMS	967800 JA-5541-DF	108	108	108	108	108
SYSTEMS	974200 118A165	630	619	450	445	398
FASHION	977200 JA-5541-DF	108	108	36	25	10
FASHION	992000 118A164	30	30	26	26	25
FASHION	992200 118A164	20	20	5	2	1
					15	10
					551	498



Quality			
System	Department	Fault Description	Pieces
SYSTEMS	3	14 Raw Edge	6
SYSTEMS	3	31 Run off stitches	1
FASHION	4	14 Raw Edge	8

COMPUTER REQUIREMENTS FOR ETONselect

ETONselect MASTER PC

Intel/AMD processor 2,66 GHz (or equivalent)
500 Mb hard disc free for ETONselect
min 1 Gb internal memory
(2 Gb with Windows Vista or Windows 7)
19" Colour monitor
9 pin Communication port-
CD ROM
Operating system: 32-bit Windows 7, 32-bit Windows
Vista, 32-bit Windows XP
File system: NTFS

ETONselect CLIENTS

Intel/AMD processor 2,66 GHz (or equivalent)
300 Mb hard disc free for ETONselect
min 512 Mb internal memory
(2 Gb with Windows Vista or Windows 7)
19" Colour monitor
CD ROM
Operating system: 32-bit Windows 7, 32-bit Windows
Vista, 32-bit Windows XP
File system: NTFS

Network requirements-

100 Mbps network adapters (full duplex)
Shielded twisted pair network cable
NOTE! The network must be category 5 or better! All
devices must be able to handle 100 Mbps!

Printers

Laser (600 Dpi, min 4Mb internal memory)
using paper size A4 or Legal.

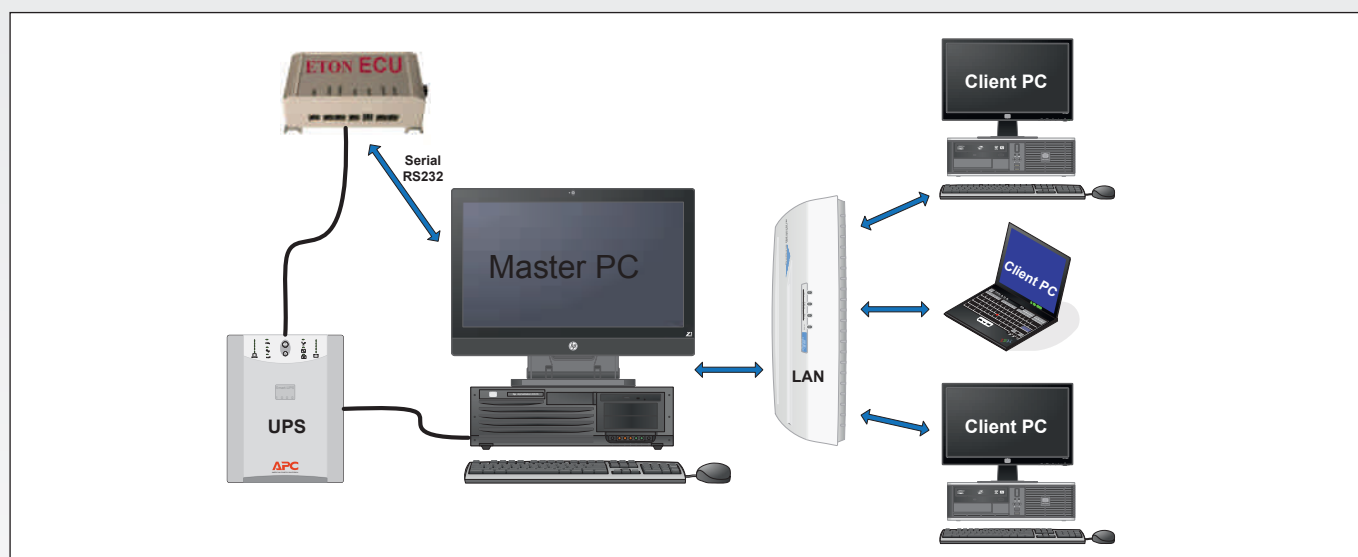
Database license

Interbase licenses are provided by Eton, according to the
information on our order confirmation (stand-alone or
network configuration requires different licenses).

HASP protection

The ETONselect software is protected with HASP USB
hardware protection key. This key is a critical component
of the system. Without the HASP USB key the ETONselect
software will become "non-functional" and require
help from Eton support. In order to protect the key and
avoid the expense of replacement, we recommend that
all ETON computers be equipped with an Internal USB
port specifically for the HASP USB hardware protection
device.

NOTE! In order to perform the running in as planned, it
is necessary that the hardware (PCs, printers, network
cards etc) is installed, tested and working, according to
the specifications above, at the time of our arrival!



HEADQUARTERS

Eton Systems AB
Box 15001
SE-507 15 Gånghester
Sweden
Tel: +46 33 23 12 00
Fax: +46 33 24 91 67
mail@eton.se

CHINA

Eton (Shanghai) Co., LTD
Unit 106, Building A
No. 3051, Hechuan Road,
Shanghai, China 201103
Tel +86 21 3405 0700
Fax +86 21 3405 0705
eton@etonchina.cn

NORTH AMERICA

Eton Systems, Inc.
4000 McGinnis Ferry Road
Alpharetta, GA 30005, USA
Tel: +1 770 475 80 22
Fax: +1 770 442 0216
sales@etonsystems.com

ETON SYSTEMS
Above and beyond

Local representatives and additional information can be found at www.etonsystems.com