



Stitching Perfection

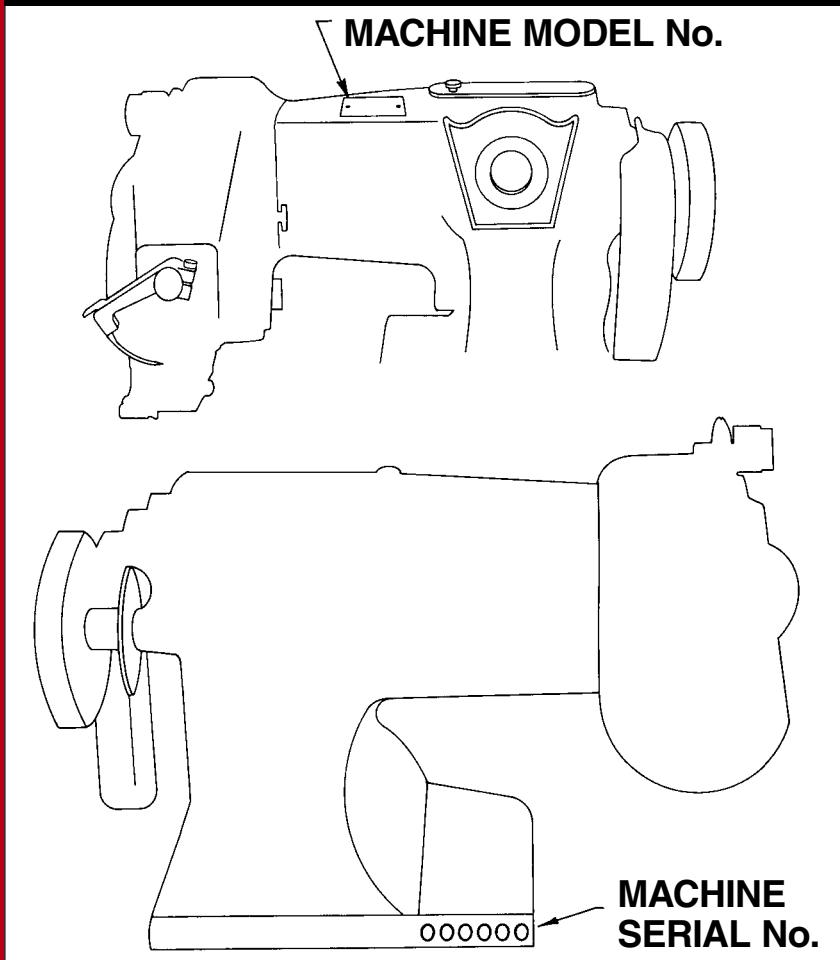
U.S. BLINDSTITCH MACHINE COMPANY

IS A DIVISION OF NEW YORK SEWING MACHINE INC.

PARTS CATALOG

SERIES: 1118, 1099, 718, 99
STANDARD SUBCLASSES

**BE SURE TO SPECIFY MACHINE MODEL
AND SERIAL No. WHEN ORDERING PARTS**

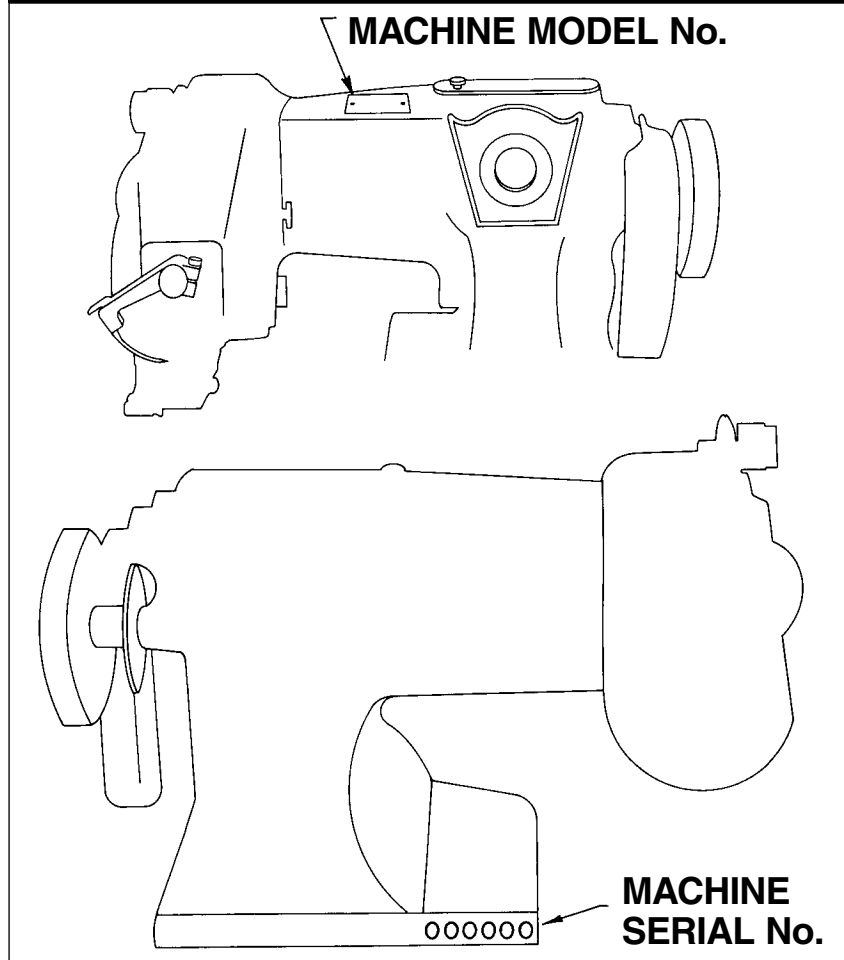


8555 Tonnelle Avenue, Unit 301, North Bergen, NJ 07047
Tel: 201-809-2009 • 1-800-225-2852 • FAX: 201-861-9201
email: machines@nysmac.com • www.nysmac.com • www.USBlindstitch.com

INDEX

How To Order Parts	3
Feed Drive Group	6
Feed Frame Group I	8, 9, 10, 11
Feed Frame Group II	12, 13
Front Plate Group III	14, 15
Front Plate Group for 718 & 99	14
Looper Drive Group	7
Main Group	19
Main Shaft Group	4
Needle Drive Group	5
Parts List For Model 99-BL	19
Parts List For Model 99-PR	20
Parts For U.S. Automatic Belt Unit	21, 22
Presser Foot Assembly Group I	17
Presser Foot Assembly Group II	18
Regulating Group	16
Genuine U.S. Blindstitch Needles	23
U.S. Blindstitch Machines - Over 50 models available	24

BE SURE TO SPECIFY MACHINE MODEL AND SERIAL No. WHEN ORDERING PARTS



U.S. BLIND STITCH MACHINE CO.

IS A DIVISION OF NEW YORK SEWING MACHINE INC.

8555 Tonnelle Avenue, Unit 301, North Bergen, NJ 07047 • www.usblindstitch.com

Tel: 201-809-2009 • 1-800-225-2852 • FAX: 201-861-9201 • email: machines@nysmac.com

HOW TO ORDER PARTS

PURCHASE ORDER

QUANTITY	DESCRIPTION	PRICE	AMOUNT
	FOR U.S. MODEL 1118-1, 718- SERIAL No.	12345	
1 12	Part No. 2100 Feed Dog Part No. 1238 Needle Guide		
<p>If parts are being ordered for several machines the Purchase Order should be prepared in a similar fashion to the following example:</p>			
	FOR U.S. MODEL 1099-BL, – SERIAL No.	67890	
1 12	Part No. 2100 Feed Dog Part No. 1238 Needle Guide		
	FOR U.S. MODEL 1118-C, – SERIAL No.	12345	
1 2	Part No. 1046 Handwheel Part No. 1119 Screws – Feed Dog Attaching		
	FOR U.S. MODEL 638, – SERIAL No.	67890	
1	Part No. 2112 Feed Dog		

Be SURE to Specify Model and Serial number of machine when ordering parts!

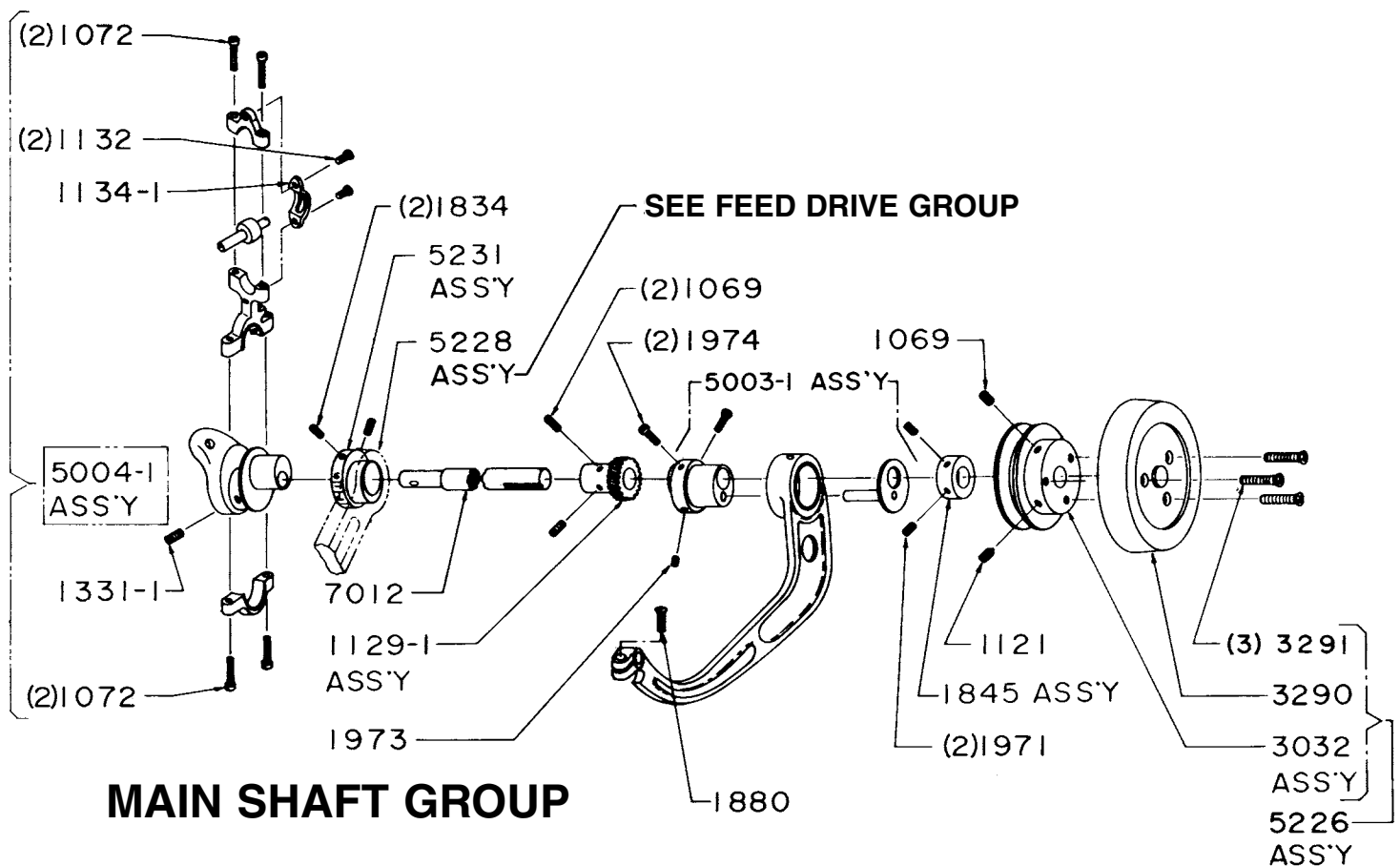
MAIN SHAFT GROUP

- 1044 MAIN SHAFT for 718 & 99 SERIES
- 7012 Main Shaft
- 5003-1* Rib Connection Lever & Eccentric Assembly
 - 1974 Screw Eccentric
 - 1973 Screw for Stud
 - 1880 Screw, Clamp
- 5004-1* Needle Connection Assembly for 99BL or 99PB-1 1288/1
 - 1072 Screw
 - 1134-1 Guard
 - 1132 Screw
 - 1132-1 Screw
- 5231 Stitch Collar Assembly, Regular
 - 1834 Set Screw

- 1129-1 Gear Spiral 2 to 1 Ratio
- 1069 Screw
- 1845 Collar Assembly
- 1971 Screw
- 5226** Handwheel Assembly
- 3290 Handwheel
- 3291 Screw
- 3032 Pulley Assembly
- 1121 Screw
- 1069 Screw

****The Following Optional Handwheel Assemblies Are Available:**

- 5188-1 Handwheel with Position Hub
- 5240 Handwheel Double Pulley Assembly
- 5253 Handwheel Double Pulley Positioner Hub Assembly Post



MAIN SHAFT GROUP

U.S. BLIND STITCH MACHINE CO.

IS A DIVISION OF NEW YORK SEWING MACHINE INC.

8555 Tonnelle Avenue, Unit 301, North Bergen, NJ 07047 • www.usblindstitch.com

Tel: 201-809-2009 • 1-800-225-2852 • FAX: 201-861-9201 • email: machines@nysmac.com

NEEDLE DRIVE GROUP FOR 1118, 1099, 718 & 99 SERIES

5082 Needle Lever Assembly
 1076 Screw
 3050 Screw
 1137 Clamp
 1234 Pin
 1136 Lever

5135 Collar Assembly
 1089 Screw
 1095 Shaft
 1118 Screw

NEEDLE SIZES AVAILABLE

USE GENUINE U.S. BLINDSTITCH NEEDLES FOR BEST RESULTS

Long Needles - System 251

Regular Point Needles

00
 10
 15
 20
 25
 30
 35
 40
 55

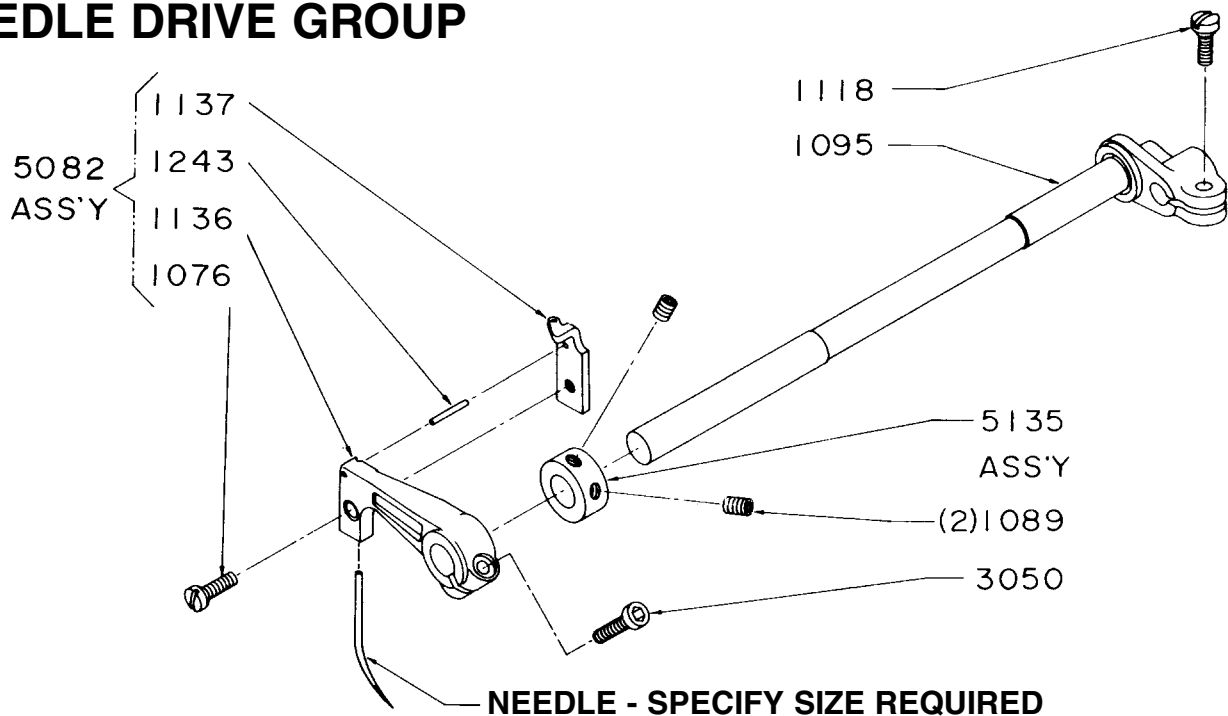
Ball Point Needles

10
 15
 20
 25

Spear Point Sizes

10
 15
 20
 25
 30
 35
 65

NEEDLE DRIVE GROUP



U.S. BLINDSTITCH MACHINE CO.

IS A DIVISION OF NEW YORK SEWING MACHINE INC.

8555 Tonnel Avenue, Unit 301, North Bergen, NJ 07047 • www.usblindstitch.com

Tel: 201-809-2009 • 1-800-225-2852 • FAX: 201-861-9201 • email: machines@nysmac.com

FEED DRIVE GROUP FOR 99CS1HH SERIES

- 5208 Feed Lever & Stitch Collar Assembly (*Sold as Assembly only*)
- 5016 Feed Rocker Assembly
- 3019 Feed Lever Plate
- 3021 Screw - Lever Plate
- 1821 Thrust Collar Assembly
- 1870 Screw Set
- 2100* Feeder
- 1119 Feeder

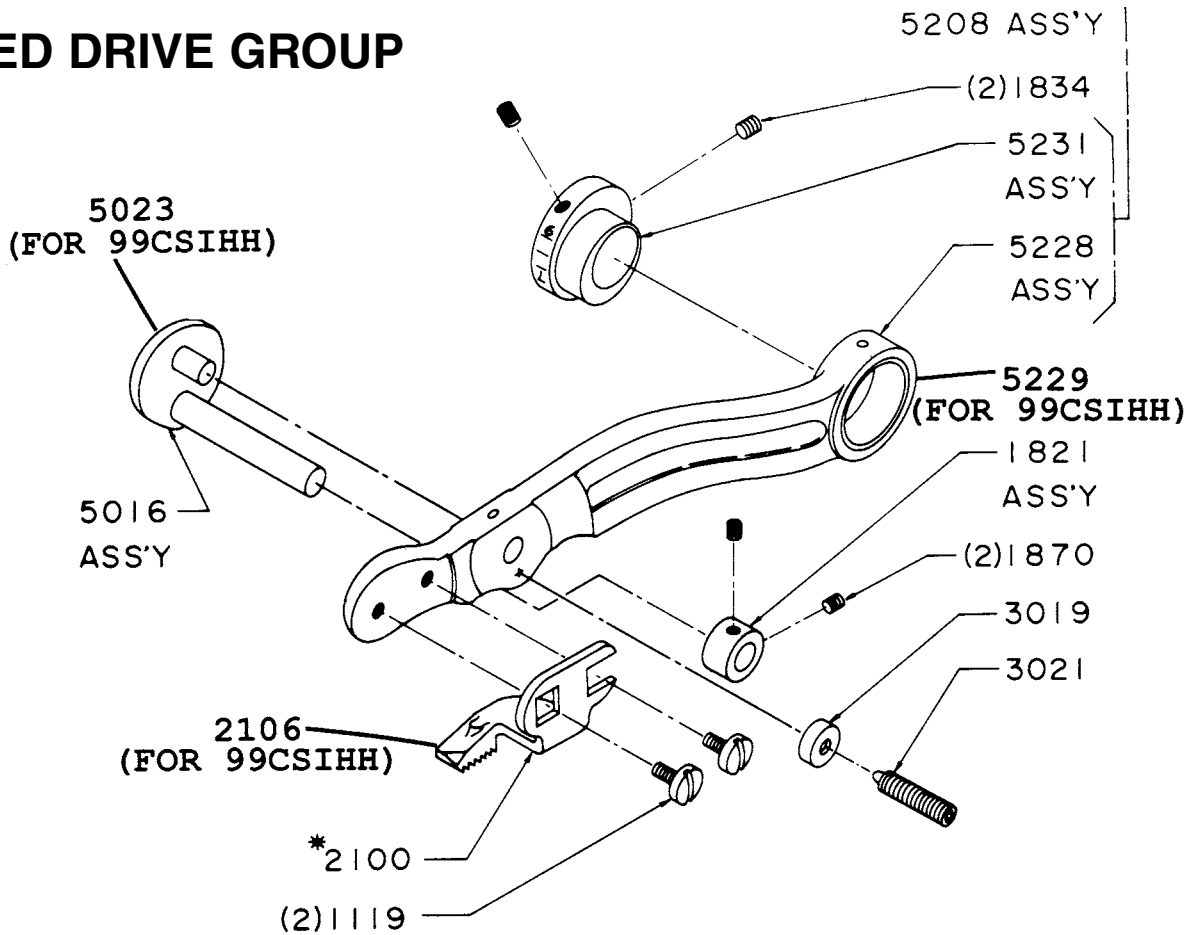
*Types Collar of Feeders Available

- Fine 2101
- Armoloyd 2125
- Carbide 2119
- Rubber 2120

TABLE

Model	Feed Rocker Assembly	Feed Lever Stitch Collar Assembly	Feed Lever Assembly	Stitch Collar Assembly	Feeder
1099-CS-1-HH	5023	5211	5229	5232	2106
B1099-CS-1-HH	5023	5211	5229	5232	2106
F1099-CS-1-HH	5023	5211	5229	5232	2106
S1099-CS-1-HH	5023	5211	5229	5232	2106
1099PBW-1	5016	5208	5228	5232	2106
1099T	5016	5208	5228	5231	2100*
1099-T-1	5023	5209	5228	5232	2106
1099-WB	5016	5208	5228	5231	2100*
1099-WB-1	5016	5208	5228	5231	2100*

FEED DRIVE GROUP



U.S. BLIND STITCH MACHINE CO.

IS A DIVISION OF NEW YORK SEWING MACHINE INC.

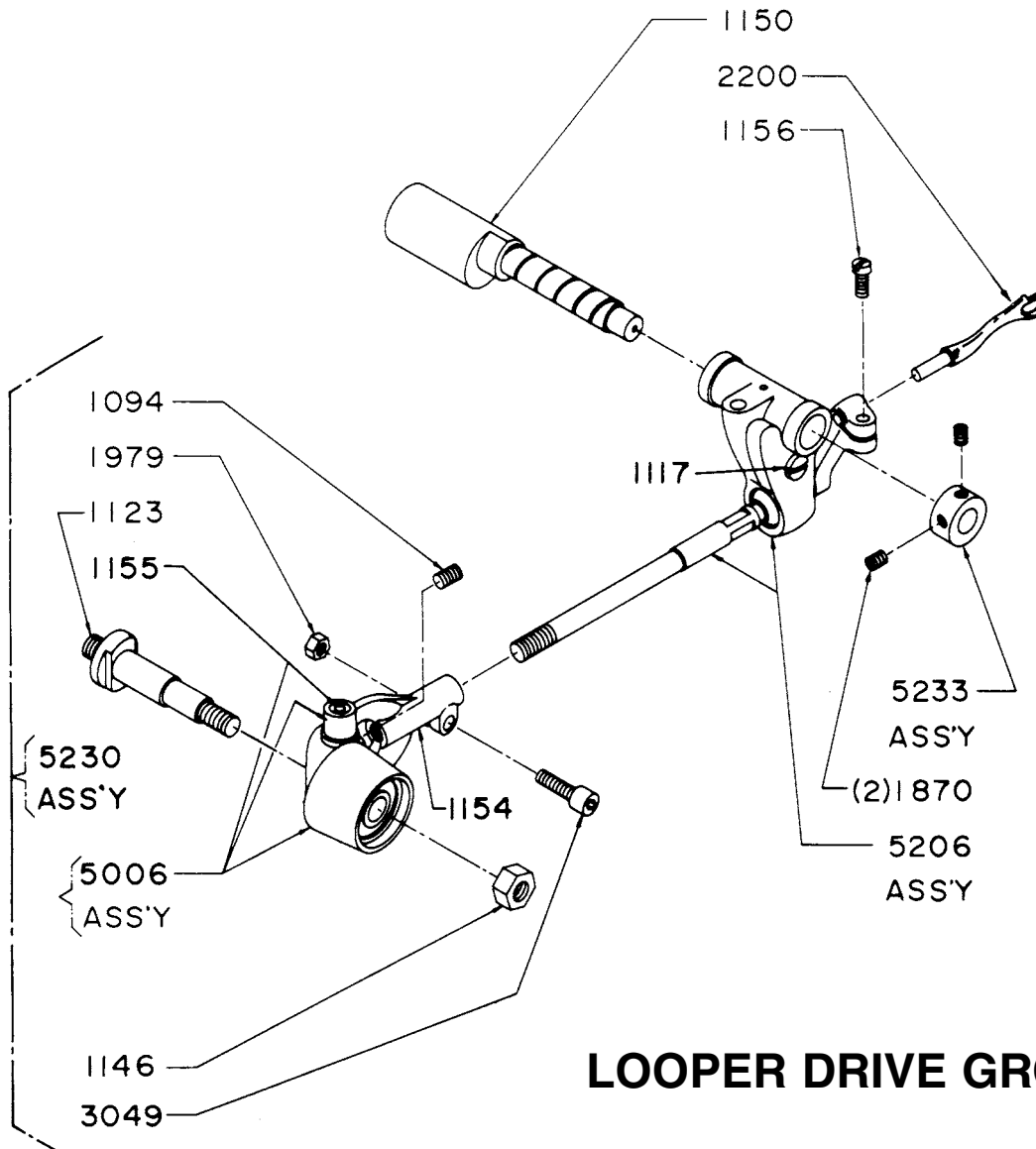
8555 Tonnelle Avenue, Unit 301, North Bergen, NJ 07047 • www.usblindstitch.com

Tel: 201-809-2009 • 1-800-225-2852 • FAX: 201-861-9201 • email: machines@nysmac.com

LOOPER DRIVE GROUP

Part No.	Description
2201	For 1099CS-1-HH Heavy Duty Machine Only
2200	Looper
1150	Stud, Looper Adjustment
5233	Collar Assembly
1870	Set Screw
5230	Looper Rod Fork, Sleeve & Stud Assembly Consists of: 1154 Fork, 1155 Pin, 3049 Screw 1979 Nut, 1123 Stud, 1146 Nut, 1094 Screw
5006	Looper Rod Sleeve Assembly (Not Sold Separately)

Part No.	Description
5213	Looper Rod & Fork Assembly Consists of: 5185 Looper Rod & Ball Assembly 1154 Fork, 3049 Screw, 1979 Nut
5186	Looper Rod & Carrier Assembly Consists of: 5017 Looper Rod Carrier Assembly 1117 Screw, 5185 Looper Rod & Ball Assembly
5026	Looper Rod, Fork & Carrier Assembly Consists of: 5186 Assembly, 1154 Fork, 3049 Screw, 1979 Nut



LOOPER DRIVE GROUP

U.S. BLINDSTITCH MACHINE CO.

IS A DIVISION OF NEW YORK SEWING MACHINE INC.

8555 Tonnelle Avenue, Unit 301, North Bergen, NJ 07047 • www.usblindstitch.com

Tel: 201-809-2009 • 1-800-225-2852 • FAX: 201-861-9201 • email: machines@nysmac.com

FEED FRAME GROUP I

5179	Feed Frame Assembly	1167	Nut Platten Lock
1836	Collar Assembly	2450	Platten Bracket - Right (718-99)
1079	Set Screw	2451	Platten Bracket - Left (718-99)
5167	Rib Shaft Crank Assembly	2455	Bracket, Left Hand Platten (718CC)
1117	Screw	2456	Bracket, Right Hand Platten (718CC)
1088	Rib Shaft Bushing - Right	1166	Stud
1087	Rib Shaft Bushing - Left	1069	Screw
6001	Rib Shaft Assembly (718-1, 718-9)	1021	Spacer: 1021-1 = .010"
6007	Rib Shaft Assembly (718-2, 718-C)		1021-2 = .015", etc.
6008	Rib Shaft Assembly (718)	1172	Spring
6010	Rib Shaft Assembly (718C-6)	1710	Screw, Limit
6036	Rib Shaft Assembly (718-6)	1055	Post
7019	Plate, Window	2401	Platten Right Hand
1864	Screw, Plate	1113	Screw, Frame
1056	Post, Spring	1105	Screw, Skip Stitch Compensating
1262	Nut	7025	Cylinder
2400	Platten, Left Hand	1211	Cylinder (718-99)
1244-4	Screw, Platten	1101	Cylinder (718-C6)
1146	Nut	7014	Shaft, Rocker
1029	Nut	1205	Window Plate
1966	Screw, Cylinder	1030	Screw Window Plate Attaching
		1066	Shaft Main (718-99)

TABLE

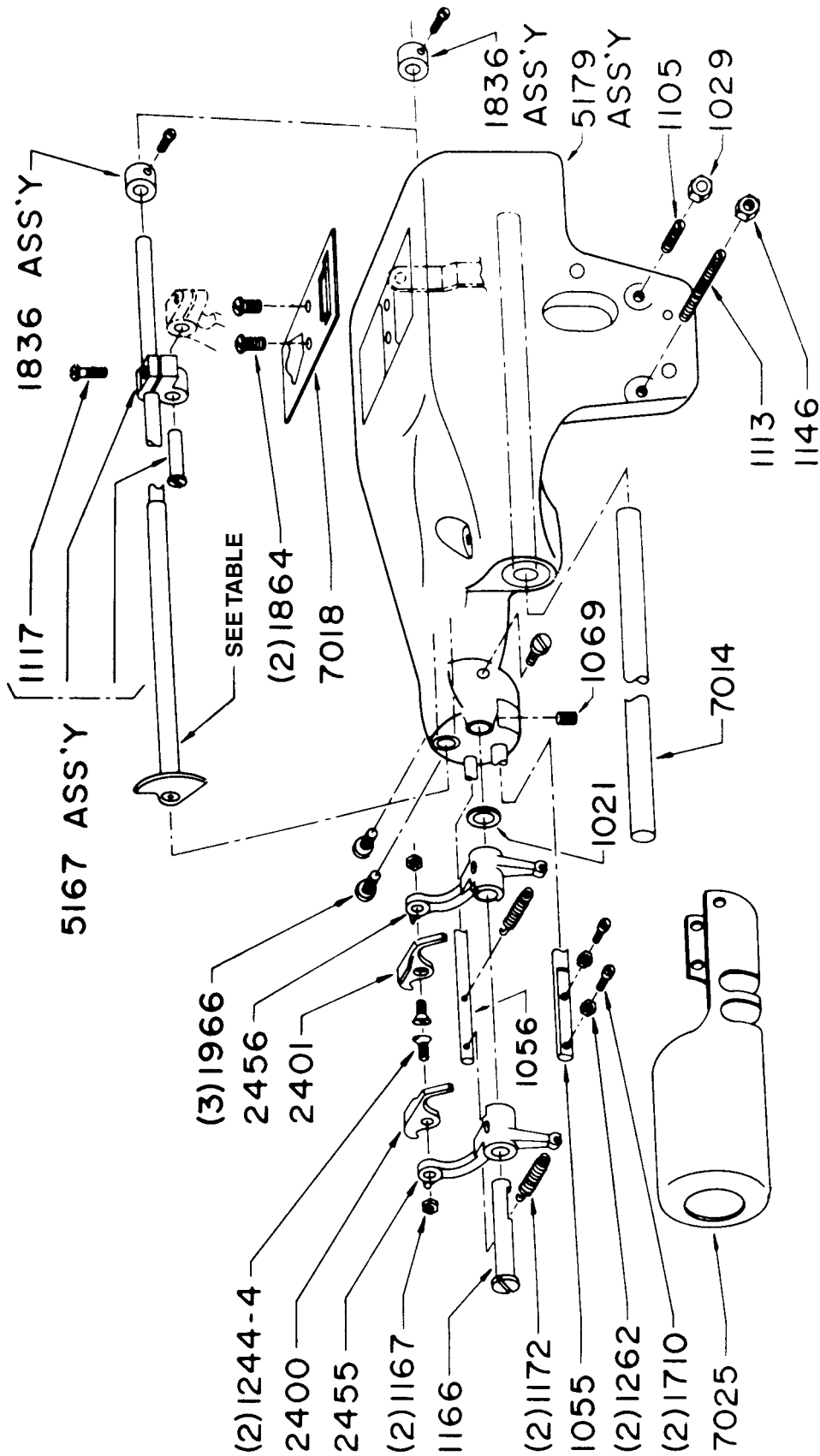
Model	Rib Shaft Assembly	Model	Rib Shaft Assembly
1118	8008	718-99	6008
1118-C	8007	718-99	6007
1118-K	8004	718-99	6004
1118-N	8008	718-99	6008
1118-S	8000	718-99	6001
1118-1	8001	718-99	6007
1118-2	8007	718-99	6001
1118-9	8001	718-99	—

U.S. BLIND STITCH MACHINE CO.

IS A DIVISION OF NEW YORK SEWING MACHINE INC.

8555 Tonnelle Avenue, Unit 301, North Bergen, NJ 07047 • www.usblindstitch.com

Tel: 201-809-2009 • 1-800-225-2852 • FAX: 201-861-9201 • email: machines@nysmac.com



FEED FRAME GROUP I

U.S. BLINDSTITCH MACHINE CO.

IS A DIVISION OF NEW YORK SEWING MACHINE INC.

8555 Tonnelle Avenue, Unit 301, North Bergen, NJ 07047 • www.usblindstitch.com
 Tel: 201-809-2009 • 1-800-225-2852 • FAX: 201-861-9201 • email: machines@nysmac.com

FEED FRAME GROUP I

5179	Feed Frame Assembly	2464	Platten Bracket for 99 CS118 Series
1836	Collar Assembly	See Table	Bracket, Left Hand Platten
5167	Rib Shaft Crank Assembly	See Table	Bracket, Right Hand Platten
	11079 Set Screw	See Table	Stud
	11117 Screw	1069	Set Screw
7018	Plate, Window	1021	Screw, Top Cover
1864	Screw, Plate	1107	Spacer: -1021-1 = .010"; -1021-2 = .015"; etc.
1056	Post, Spring	See Table	Spring
***1262	Nut	***1710	Screw, Limit
See Table	Platten, Left Hand	1055	Post
1244-4	Screw, Platten	See Table	Platten, Right Hand
1146	Nut	1113	Screw, Frame
1029	Nut	1105	Screw
See Table	Screw, Cylinder	See Table	Cylinder
1167	Nut, Platten Lock	7014	Shaft Rocker
2463	Platten Bracket for 99 CS118 Series		

TABLE

Model	Rib Shaft Assembly	Platten Left	Platten Right	Platten Bkt Left	Platten Bkt Right	Spring	Stud	Cylinder	Cylinder Screw
1099-CS-1-HH	8067-1	2400	2401	2473	2474	3062	1379	7025	1966
B1099-CS-1-HH	8096	Roller* 7140	2435	2473-1	2474	3065	1379-1	7025	1966
*F1099-CS-1-HH	8096	2436	2437	2482-1	2481-1	1172	1379-1	-	-
***S1099-CS-1-HH	8096	2422	Pin 3013	Pin 3013	4 Required	1172	1379	7025	1966
			2423	2482-1	2481-1				
			Pin 3013	Pin 3013	4 Required				
For 1099 Series:									
1099-PBW-1	8068**	2400	2401	2473	2474	3062	1379	7025	1966
1099-T	8024**	2400	2401	2473	2474	3062	1379	-	-
1099-T-1	8024**	2400	2401	2473	2474	3062	1379	7025	1966
1099-WB	8017**	2400	2401	2466	2465	3062	1379	-	-
1099-WB-1	8021**	2400	2401	2466	2465	3062	1379	-	-
For 1099 Series:	**Rib Shaft Assembly	Rib	Rib Pawl	Rib Hub	Collar	Spring	Screw	Nut	For 99 Series:
60	8086	2081	2083	-	-	1376	1377	1881	6086
60	8084	2020	-	2021	1373	1306	1935	-	6024
60	8017	2017-1	-	2018-1	-	1307	1377	1881	6017
60	8021	2017	-	2019	-	1307	1377	1881	6021

*1995 Roller Screw

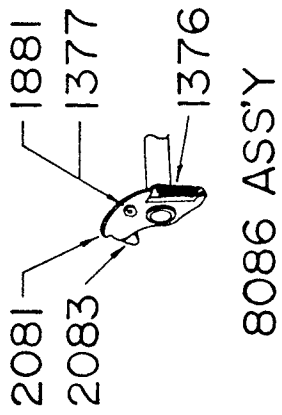
***In place of 1710 & 1262, use part numbers 1132 (2), 1114 (2), 1168 (2) and 7150

U.S. BLIND STITCH MACHINE CO.

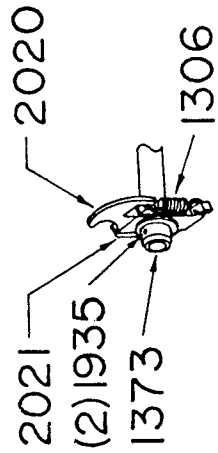
IS A DIVISION OF NEW YORK SEWING MACHINE INC.

8555 Tonnel Avenue, Unit 301, North Bergen, NJ 07047 • www.usblindstitch.com

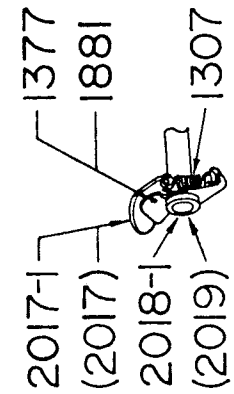
Tel: 201-809-2009 • 1-800-225-2852 • FAX: 201-861-9201 • email: machines@nysmac.com



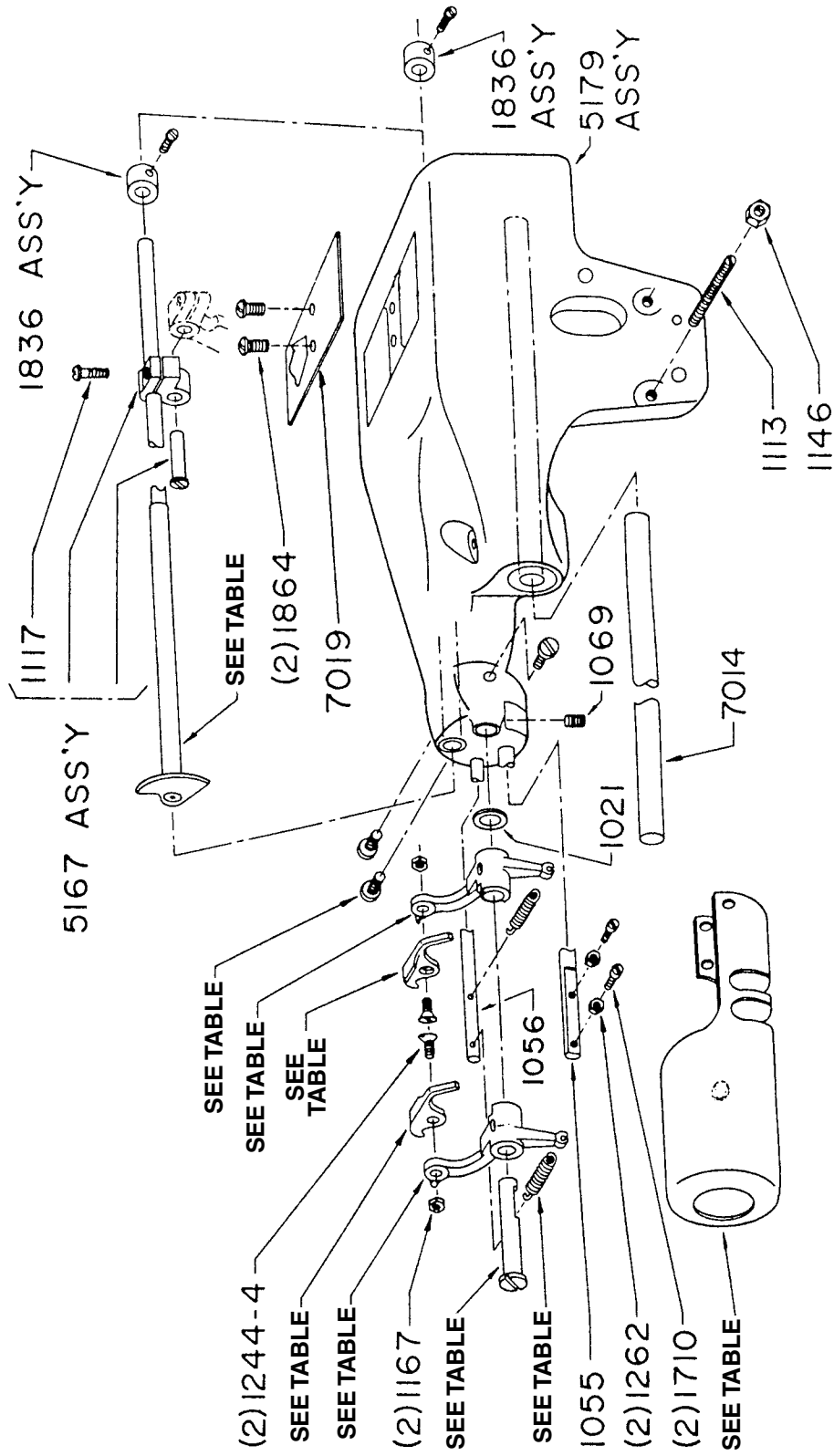
8086 ASS'Y



8024 ASS'Y



8017 ASS'Y
(8021 ASS'Y)



FEED FRAME GROUP I

U.S. BLINDSTITCH MACHINE CO.

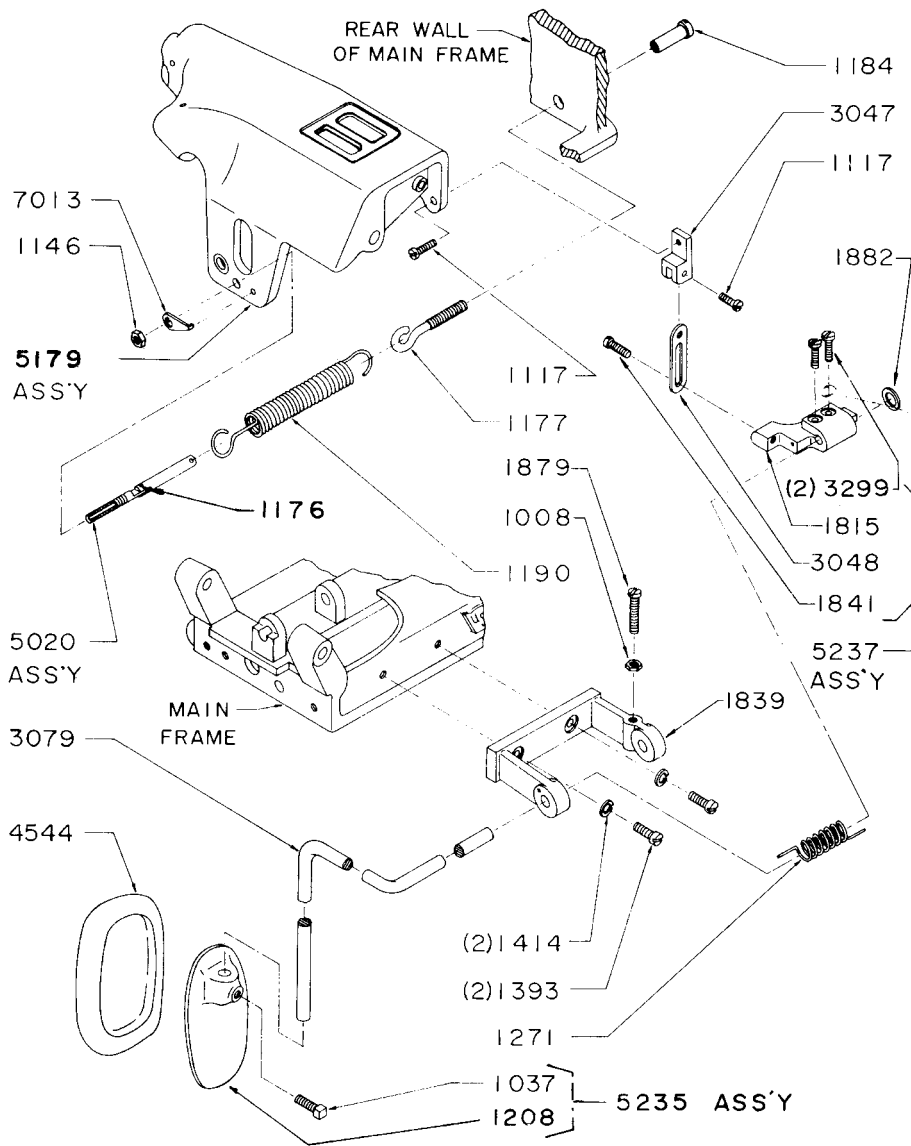
IS A DIVISION OF NEW YORK SEWING MACHINE INC.

8555 Tonnelle Avenue, Unit 301, North Bergen, NJ 07047 • www.usblindstitch.com

Tel: 201-809-2009 • 1-800-225-2852 • FAX: 201-861-9201 • email: machines@nysmac.com

FEED FRAME GROUP II

- | | | | |
|------|----------------------|--------|----------------------------|
| 5020 | Spring Link Assembly | 5235 | Knee Pedal Assembly |
| 1176 | Pin | 1208 | Knee Pedal |
| 1146 | Nut, Retaining | 1037 | Screw |
| 1177 | Screw Link | 7013 | Key |
| 1191 | Main Spring | 5162-V | Vertical Offset Rod |
| 5163 | Lift Arm Assembly | 1838 | Nut |
| 1135 | Lift Arm | 4544 | Pad, Pedal |
| 1855 | Screw | 5162-H | Horizontal Rod, Knee Press |
| 1334 | Hook | 131-31 | Pin |
| 1120 | Screw | 7024 | Lever |
| 1035 | Screw | 1203 | Stud (for 718) |
| 1008 | Nut | 1028 | Washer |
| 3055 | Collar Assembly | 1007 | Screw |
| 1992 | Set Screw | 1066 | Shaft-Feed Frame Rocker |
| 1061 | Spring | 1202 | Leather (for 718) |



U.S. BLIND STITCH MACHINE CO.

IS A DIVISION OF NEW YORK SEWING MACHINE INC.

8555 Tonnelle Avenue, Unit 301, North Bergen, NJ 07047 • www.usblindstitch.com

Tel: 201-809-2009 • 1-800-225-2852 • FAX: 201-861-9201 • email: machines@nysmac.com

FEED FRAME GROUP II

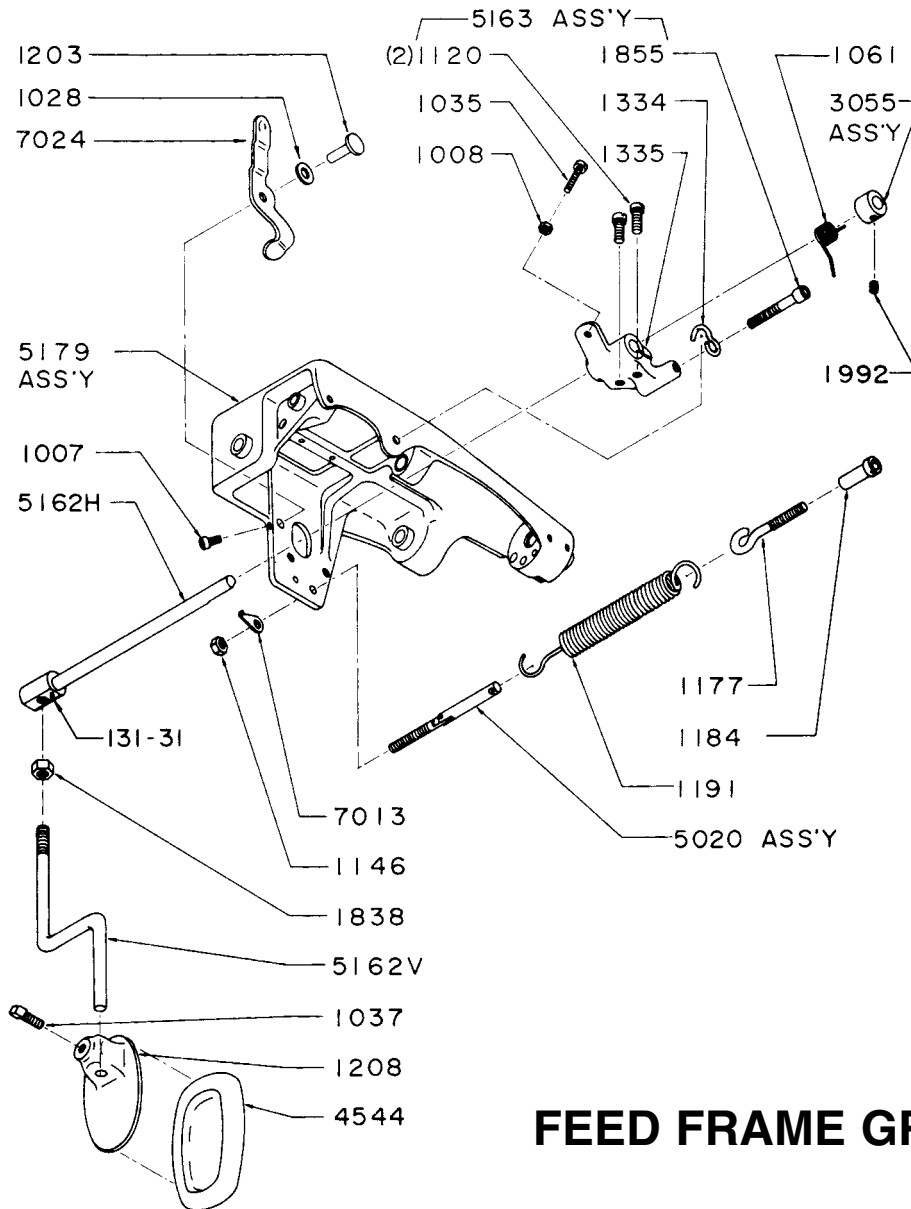
NOTE:

- | | | | |
|------|---------------------------------|------|-----------------------------------|
| 7006 | Swing Plate | 3026 | Retaining Ring |
| 1200 | Swing Bracket (718 & 99 Series) | 7009 | Support Bracket |
| 1051 | Screw | 1228 | Support Bracket (718 & 99 Series) |
| 5015 | Stop Pin Assembly | 1103 | Screw |
| 1227 | Stop Plate | 1230 | Washer, Flat |
| 1052 | Screw | 1229 | Washer, Lock |
| 1053 | Washer | 1226 | Collar Assembly |
| 1051 | Set Screw | 1992 | Set Screw |
| 3016 | Spring Washer | | |
| 1225 | Pivot Pin | | |

5251* Complete Swing Plate Assembly

FRONT PLATE GROUP

Subclasses 1118-9, 1099-9, use stationary workplate. Complete assembly number 5264.



FEED FRAME GROUP II

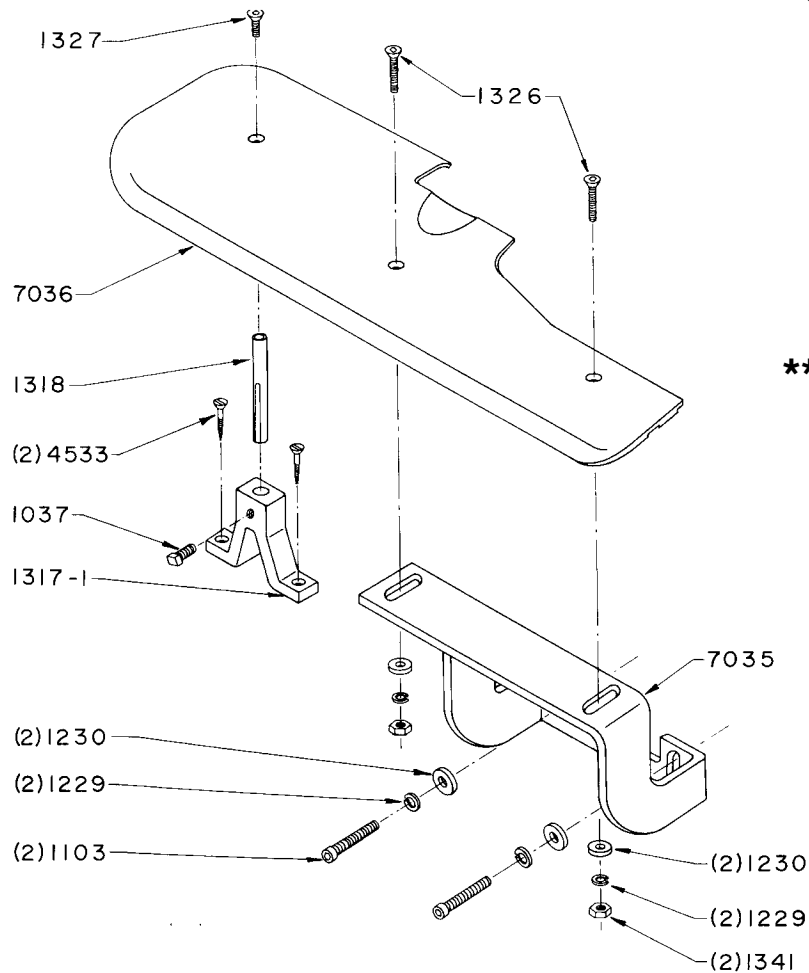
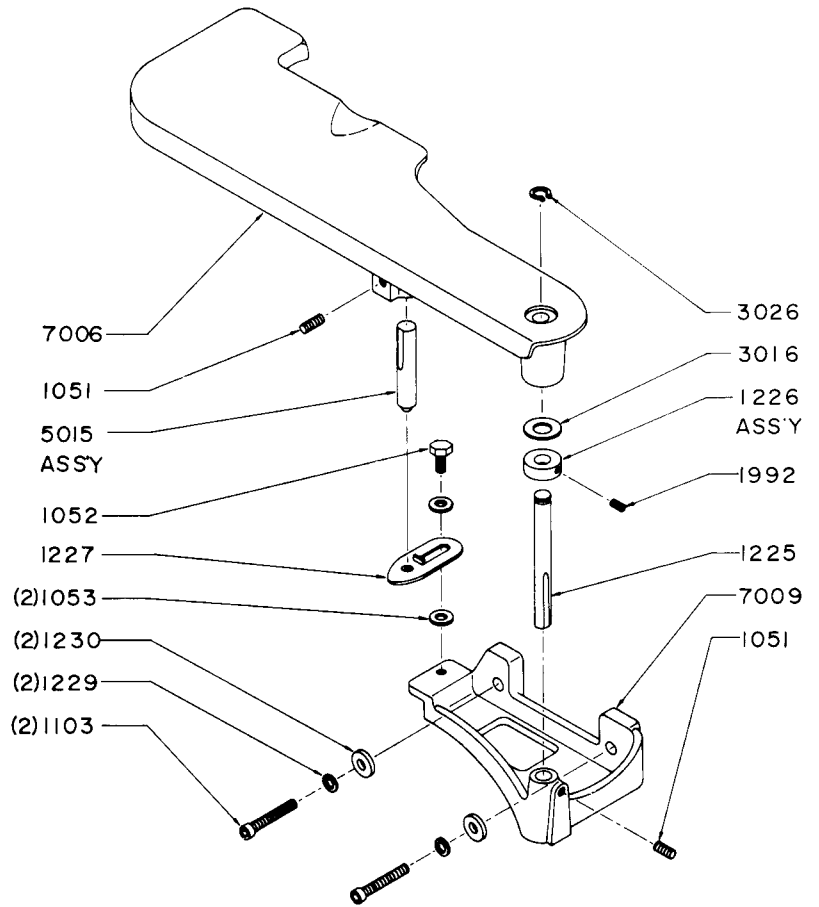
U.S. BLINDSTITCH MACHINE CO.

IS A DIVISION OF NEW YORK SEWING MACHINE INC.

8555 Tonnelle Avenue, Unit 301, North Bergen, NJ 07047 • www.usblindstitch.com

Tel: 201-809-2009 • 1-800-225-2852 • FAX: 201-861-9201 • email: machines@nysmac.com

***COMPLETE ASSEMBLY
No. 5251
FRONT PLATE GROUP
(featured at right)**



****COMPLETE ASSEMBLY
No. 5264
FRONT PLATE GROUP
(featured at left)**

U.S. BLIND STITCH MACHINE CO.

IS A DIVISION OF NEW YORK SEWING MACHINE INC.

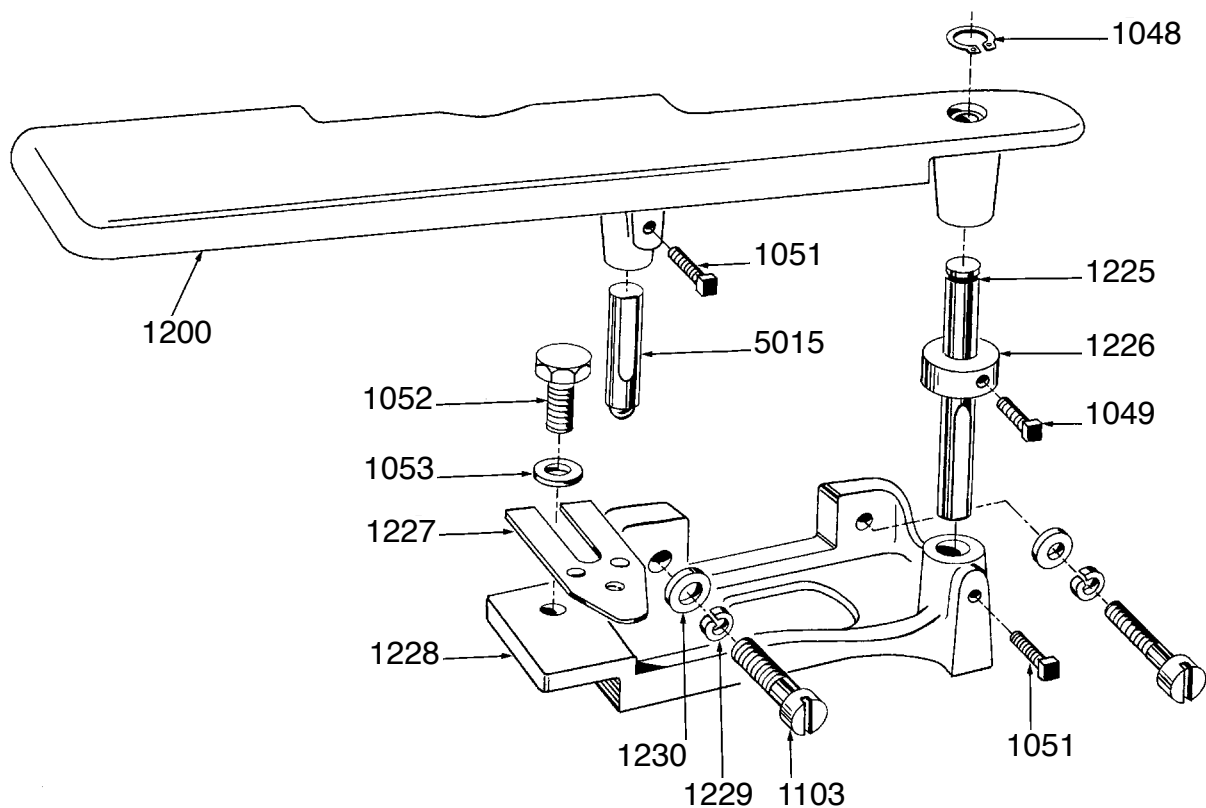
8555 Tonnelle Avenue, Unit 301, North Bergen, NJ 07047 • www.usblindstitch.com

Tel: 201-809-2009 • 1-800-225-2852 • FAX: 201-861-9201 • email: machines@nysmac.com

FRONT PLATE GROUP FOR 718 & 99

1200*	Swing Plate	5015	Stop Pin Assembly
1225	Pivot Pin – Swing Plate	1227	Stop Plate
1048	Retaining Ring	1052	Screw – Stop Plate Attaching
1226	Collar-Swing Plate Pivot Pin	1053	Washer – Stop Plate Attaching Screw
1049	Screw-Swing Plate Pivot Pin Collar-Set	1051	Screw – Stop Pin-Lock
1228	Bracket – Swing Plate-Support	1051	Screw – Swing Plate Pivot Pin-Lock
1103	Screw-Swing Plate Support Bracket-Attaching		
1230	Washer (Flat)-Swing Plate Support Bracket Screw		
1229	Washer (Lock)-Swing Plate Support Bracket Screw		

*A smaller plate for special work such as infants' wear is available as an option. Specify Part No. 1360.



FRONT PLATE GROUP FOR 718 & 99

U.S. BLINDSTITCH MACHINE CO.

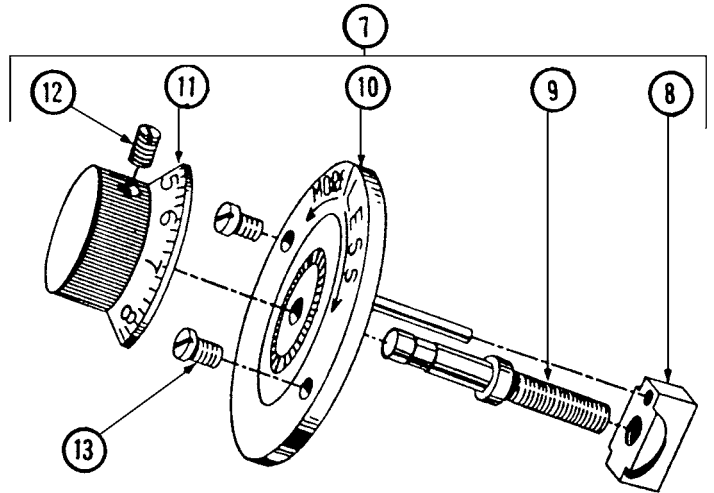
IS A DIVISION OF NEW YORK SEWING MACHINE INC.

8555 Tonnelle Avenue, Unit 301, North Bergen, NJ 07047 • www.usblindstitch.com

Tel: 201-809-2009 • 1-800-225-2852 • FAX: 201-861-9201 • email: machines@nysmac.com

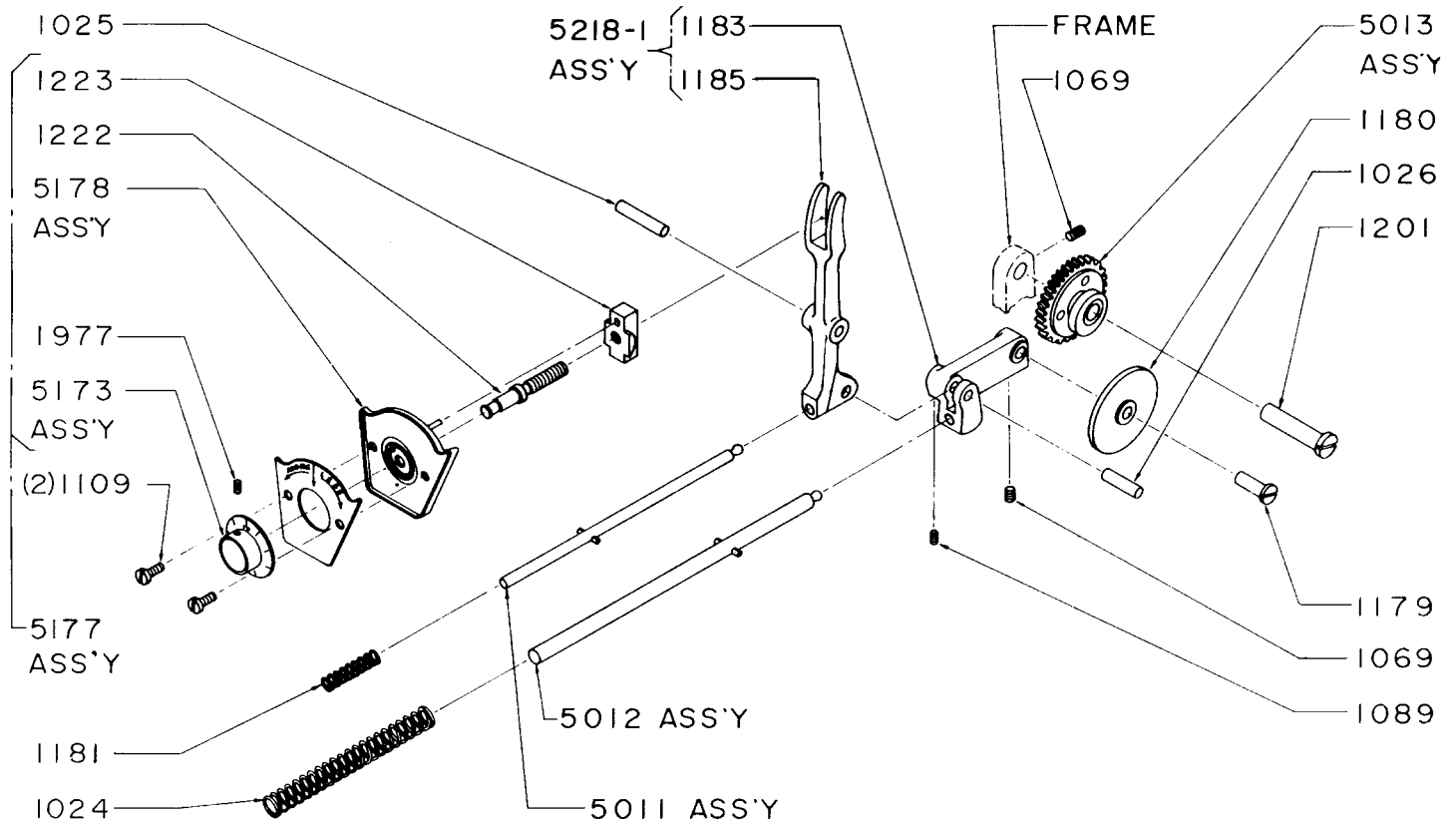
REGULATING GROUP FOR 718 & 99 SERIES

- 7. 5018 Regulating Dial Assembly
- 8. 5018 Regulating Dial Shoe
- 8. 1222 Regulating Dial Shoe
- 9. 5010 Face Plate & Guide Pin Assembly
- 10. 5039 Dial and Ratchet Assembly
- 11. 5039 Screw-Dial and Ratchet Assembly Lock
- 12. 1109 Screw-Regulating Dial Assembly Attaching



REGULATING GROUP FOR 1118 & 718 SERIES

- | | |
|---------------------------|---|
| 1201 Pin, Pivot, Gear | 5012 Push Rod Assembly |
| 1069 Set Screw | 1023 Pin 1024 Spring |
| 1180 Cam Follower | 5013 Gear Assembly, Skip Stitch - 2:1 Ratio |
| 1179 Pin, Pivot, Follower | 5177 Gear Assembly - Complete |
| 1169 Set Screw | 1109 Screw Regulator |
| 1183 Support Arm | 5173 Dual & Ratchet Assembly |
| 1026 Pin, Pivot, Arm | 1123 Shoe 1222 Screw 1977 Screw |
| 1089 Set Screw | 1025 Pin |
| 1185 Regulating Fork | 5011 Push Rod Assembly |
| | 1022 Pin 1181 Spring |



U.S. BLIND STITCH MACHINE CO.

IS A DIVISION OF NEW YORK SEWING MACHINE INC.

8555 Tonnelle Avenue, Unit 301, North Bergen, NJ 07047 • www.usblindstitch.com

Tel: 201-809-2009 • 1-800-225-2852 • FAX: 201-861-9201 • email: machines@nysmac.com

PRESSER-FOOT ASSEMBLY GROUP I FOR 718 & 99 SERIES

COMPLETE ASSEMBLY (See Table)

PARTIAL ASSEMBLY (See Table)

Presser Foot Assembly (*Partial*)

Consists of:

(*See Table*) Presser Foot

2900 Pin - "Chain-Off"

1866 Screw

1238 Needle Guide

1102 Screw

1933 Screw

(*See Table*) Shoe

3067 Wedge

1075 Screw

3068 Bushing, Shoe Adjustment

1133 Screw

1237 Pin

1832 Spring

1976 Set Screw

1242 Bracket

1099 Screw

2600 Guide

1079 Screw

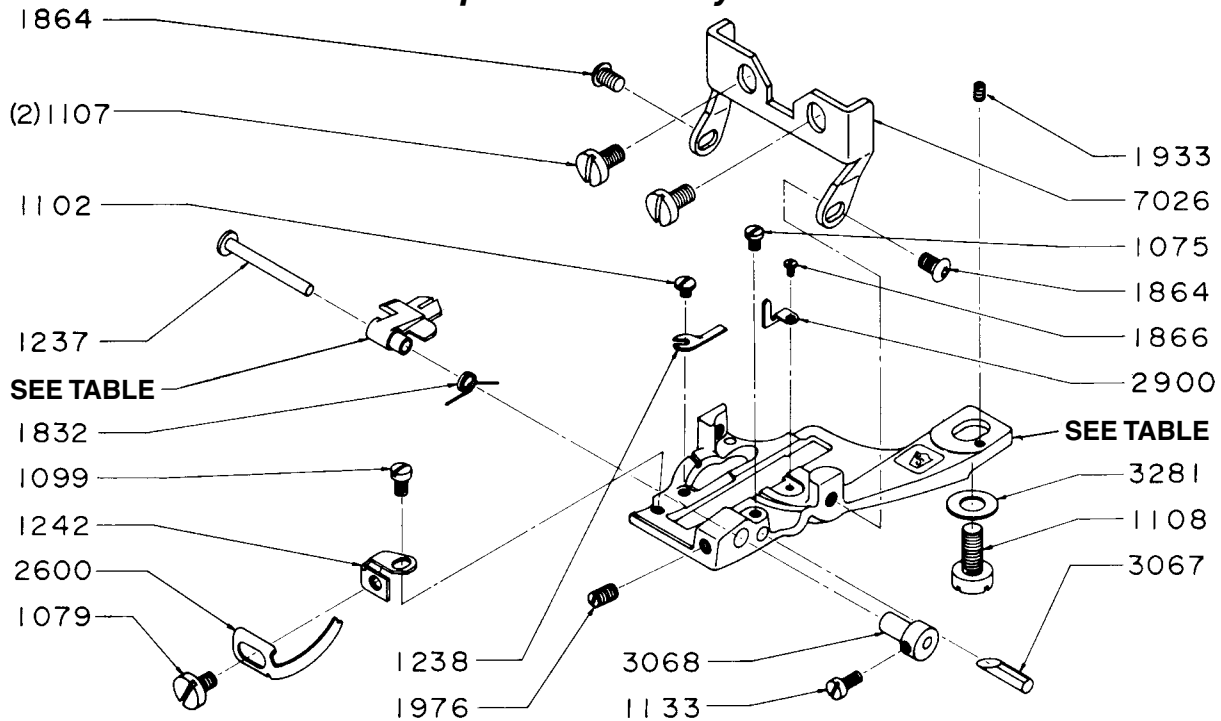
1107 Screw, Bridge Mount

7026 Bridge

Model	Shoe	TABLE Presser Foot	Partial Assembly	Complete Assembly
1118	2553	2351	8501	8601
1118-C	2550	2350	8500	8600
1118-K	2550	2350	8500	8600
1118-N	2554	2352	8502	8602
1118-1	2550	2350	8500	8600
1118-2	2550	2350	8500	8600
1118-9	2550	2350	8500	8600

PRESSER-FOOT ASSEMBLY GROUP I

Partial and Complete Assembly – See table above



U.S. BLINDSTITCH MACHINE CO.

IS A DIVISION OF NEW YORK SEWING MACHINE INC.

8555 Tonnel Avenue, Unit 301, North Bergen, NJ 07047 • www.usblindstitch.com

Tel: 201-809-2009 • 1-800-225-2852 • FAX: 201-861-9201 • email: machines@nysmac.com

PRESSER FOOT GROUP II

COMPLETE ASSEMBLY (See Table)

PARTIAL ASSEMBLY (See Table)

Presser Foot Assembly (*Partial*)

Consists of:

(*See Table*) Presser Foot

(*See Table*) PIN – “Chain-Off”

1866 Screw

1238 Needle Guide

1102 Screw

1933 Screw

(*See Table*) Shoe

1308 Screw

1075 Screw

1133 Screw

(*See Table*) Pin

(*See Table*) Bracket

1099 Screw

1079 Screw

7026 Bridge

1099 Screw

1372

1305

3067

(*See Table*)

3025

1976

(*See Table*)

1107

1864

Spring

Spring

Wedge

Bushing, Shoe Adjustment

Spring

Set Screw

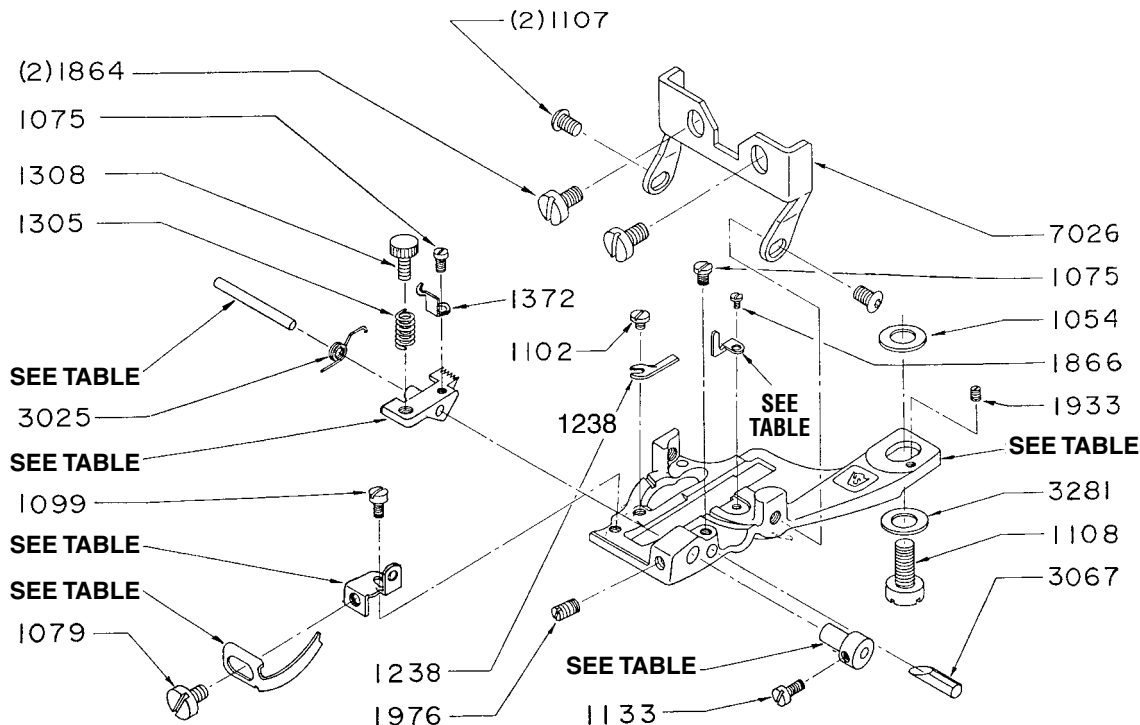
Guide

Screw, Bridge Mount

Screw

TABLE

Model	Shoe	Shoe Assembly	Anchor	Shoe Pin	Bushing	Guide	Chain-Off Pin	Presser Foot	Partial Assembly	Complete Assembly
1099-CS-1-HH	2540	5215	3024-1	3294	7210	2606	1831	2373	8503	8603
B1099-CS-1-HH	2541	5216	3024-1	3294	7210	2606	1831	2373	8503	8616
F1099-CS-1-HH	2540	5215	3024-1	3294	7210	2606	1831	2373	8503	8603
S1099-CS-1-HH	2541	5216	3024-1	3294	7210	2606	1831	2373	8503	8616
1099PBW-1	2521-1	5078-1	3024-1	3294	7210	2606	1831	2359	8509	8618
1099T	2511	5074-1	Fitted	3294	7210	-	2900	2358	8508	8619
			1418-B							
1099-T-1	2521	5078	3024-1	3294	7210	2606	2900	2359	8509	8620
1099-WB	2510	5064	Bracket	1237	3068-1	2606	2900	2352	8502	8621
			1242							
1099-WB-1	2517	5077	3024	3294	3068-1	2606	2900	2350	8500	8617



PRESSER-FOOT ASSEMBLY GROUP I

Partial and Complete Assembly – See table above

U.S. BLIND STITCH MACHINE CO.

IS A DIVISION OF NEW YORK SEWING MACHINE INC.

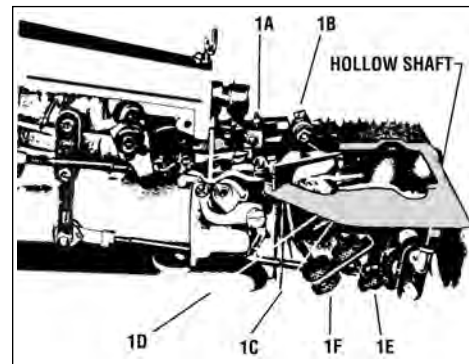
8555 Tonnelle Avenue, Unit 301, North Bergen, NJ 07047 • www.usblindstitch.com

Tel: 201-809-2009 • 1-800-225-2852 • FAX: 201-861-9201 • email: machines@nysmac.com

PARTS FOR U.S. AUTOMATIC BELT UNIT

Reference number refers to the part illustrated on page 38.

Ref. No.	Description	Part Number	Ref. No.	Description	Part Number
1.	Screw for 200 & 224	.203-A1	40.	Upper Knife Right	.1348
2.	Retainer Plate (Feed Bar)	.201-AZ	41.	Upper Knife Left	.1349
3.	Spring Tension Feed Bar	.201A	42.	Knife Carrier Support Right	.210RS
4.	Rear Top Feed Bracket	.200	43.	Screw for 225 & 210RS	.214SS
5.	Top Feed Bracket Screw	.1101	44.	Hex Head Cap for 210RS & 207ANN	.207ANSH
6.	Shoulder Screw for 200 & 201	200-2A	45.	Knife Carrier Support Left	.210LS
7.	Nut (Top Feed & Front Feed Screws)	.201-IN	46.	Screw for 210-LS & 212-C	.212-2S
8.	Front Feed Screw Set	.201-S	47.	Washer for 221	.1053
9.	Pan Head Screw (Top Feed Bracket)	.201-S	48.	Knife Spring	.221
10.	Front Top Feed Bracket	.201	49.	Side Clamp	.212-C
11.	Front Top Feed Mounting Stud	202-1	50.	Screw for 210LS	.210-RS-1
12.	Screw - Mounting (Specify Size)	217-IN	51.	Secondary Stud Knife Block	.219-B
13.	Feed Brace	.202-B	52.	Shaft, Knife Block	.219-A
14.	Tape Guide (Filler-Buckram)	.202BSN	53.	Screw eye Stud	.206-INE
15.	Hex Nut 9-40 for 216AR & 202-1	1701	54.	Washer for 207ANSH	.207ANW
16.	Carrier, Operator Lever	.215 Unit	55.	Folder Adjustable Bracket	.207-ANN
17.	Groove Pin for 230	.1663	56.	Adjustable Stud for 207ANN -207ANS BIK 207KN	.207 ANS
18.	10-32 Socket Set Screw for 215 Unit	.1814	57.	Knurled Adj. Nut for 207-ANS	.206-INE-1
19.	10-32 Socket Head Cap Screw for 215 Unit & 210RS	.215-A2	58.	Rod End Shoulder Screws	.216-AR
20.	Top Feed (Specify Size) 5/16 - 3/8 - 7/16 - 1/2	.202A (Size)	59.	Feld Washer for 216-AR	.222A
21.	Screw Folder Mounting	.217H	60.	Rod End Bearing R.H. THD	.216B
22.	Folder (Specify Size) 5/16 - 3/8 - 7/16 - 1/2 also Opening ABC	.207 (Size)	61.	Knife Shaft Lever	.214-C
23.	Bushing for 207BNF	.207-B-1	62.	Set Screw for P/N 214-C	.1331
24.	Folder Adjustable Block	.207BNF	63.	Tie Rod Nut for 216-B	.1008
25.	Eye Screw for 207BNF	.207BFS	64.	Tie Rod (Specify machine size)	.216
26.	Spring for Folder Block	.1171	65.	Tie Rod Nut L.H. for 216-A	.216-ILN
27.	Knife Clamp Right	.211-R	66.	Rod End Bearing	.216-A
28.	Knife Clamp Left	.211-L	67.	Tie Rod Shield Unit	.217A-B Unit
29.	Lower Knife Right	.1351	68.	Screw for 217A-B 7NIT & 228	228SNP
30.	Lower Knife Left	.1352	69.	Support Shim BLP Frame	.230-1
31.	Bushing for 206 Block	.206B	70.	Flat Washer Support Shim	.1054
32.	Knife Block (Specify Size) 5/16 - 3/8 - 7/16 - 1/2	.206 (Size)	71.	Screw BLP Frame Mounting	.10014
33.	Socket Cap Screw for 206 Knife Block	.231	72.	Main Frame	.225
34.	Socket Set Screw for 206 Knife Block	.206SS	73.	Chip Guard Right	.224
35.	Knife Clamp Screw (Specify Size) for 5/16 - 3/8	.211-1	74.	Support Plate for 225	.230
	for 7/16 - 1/2	.211-2	75.	Upper Chip Guard Right (Specify size) 5/16" & 3/8", 7/16", 1/2"	.204ANS
36.	Screw for 210 NR & 210 NL	.216-S1	76.	I.D. Plate Trimmer Main Frame 200-ID	
37.	Screw Upper Knife Clamp	.209-1	77.	Lower Guard Plate Right	.228
38.	Knife Carrier Right	.210-NR	78.	Lower Guard Plate Left	.203A
39.	Knife Carrier Left	.210-NL	79.	Screw Mounting 203A	.216-S
			80.	Lower Guard Plate Left 227, 227-1	.227
			81.	Screw Work Plate	.203NES
			82.	Work Plate Shield (Specify size) 5/16", 3/8", 7/16", 1/2"	.204NE Size
			83.	Work Plate	.203NEB
			84.	Oil Cup	.232



INSTRUCTIONS FOR SETTING FEEDER & KNIVES

1A – Top Auxiliary Feeder Adjusting Screws. Loosen nut and turn screw to adjust depth of feeder. **Caution:** Don't set too low as it will cause Feed Lever wear. Depth of Feeder should be set to hold two (2) ply of goods lightly. Auxiliary Feeder should be heeled so that point of Feeder is higher. This will allow Folder to rise when overlap goes through.

1B – Adjustable screw for positioning and centering feeder.

1C – For removing lower knives when replacing, set edge of knives even with folder.

1D – Screws (#209-1) for removing and adjusting top knives.

1E – Screw adjustment for raising and lowering folder.

Caution: Don't set set folder too low as rib will cause wear.

1F – Folder pressure adjustment screw.

CAUTION:

1. Machine is not too exceed 2000 RPM.
2. Motor must be 1725 RPM (2 1/2" Pulley).
3. Oil frequently – Add a few drops of oil between knives daily.
4. Stitch length should not be changed as it will affect trimmer.

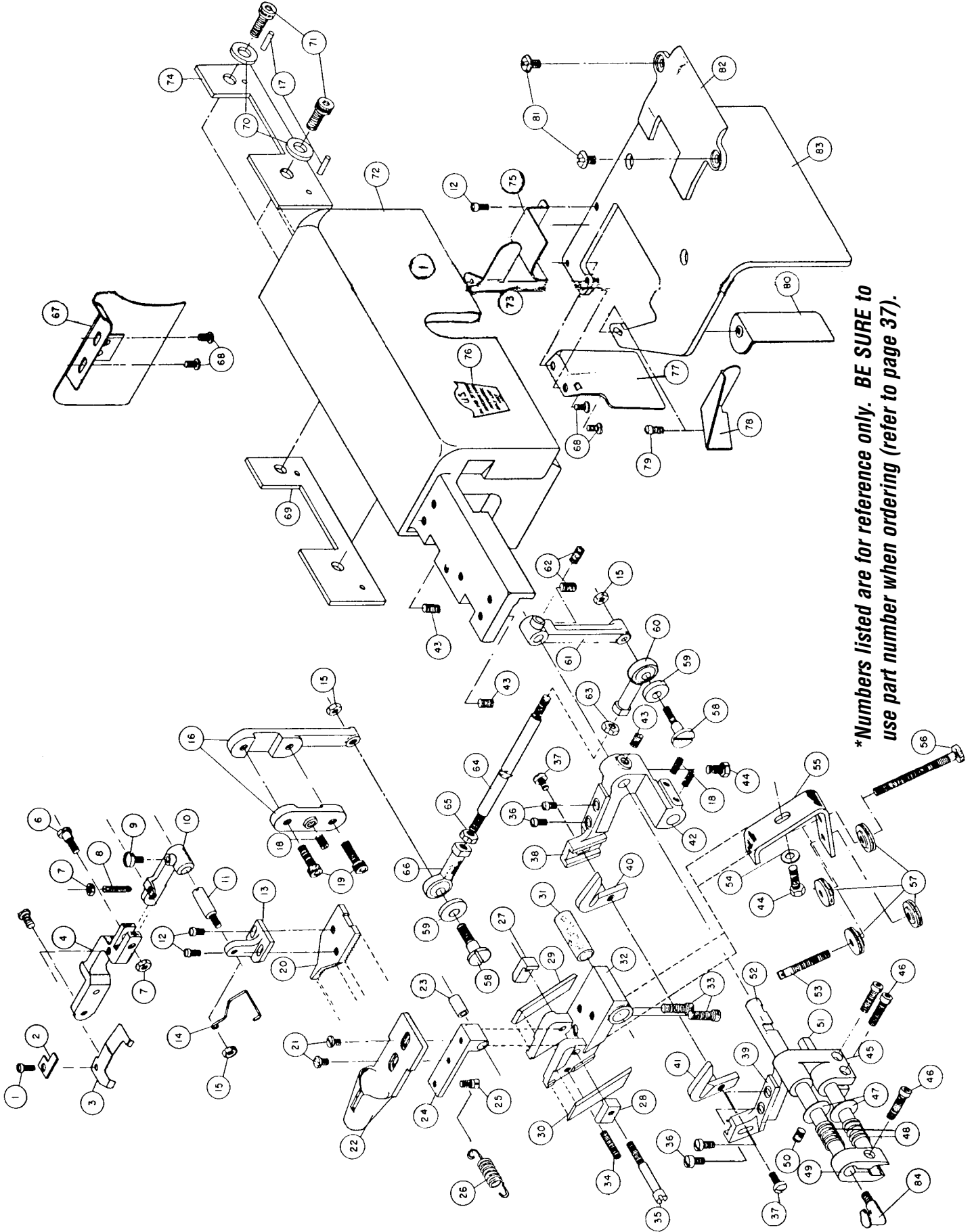
U.S. BLINDSTITCH MACHINE CO.

IS A DIVISION OF NEW YORK SEWING MACHINE INC.

8555 Tonnel Avenue, Unit 301, North Bergen, NJ 07047 • www.usblindstitch.com

Tel: 201-809-2009 • 1-800-225-2852 • FAX: 201-861-9201 • email: machines@nysmac.com

PARTS FOR U.S. AUTOMATIC BELT UNIT



A Machine is Only as Good as its NEEDLE!

Don't Take Chance – Avoid Trouble

Top quality sewing demands top quality machines equipped with top quality needles to achieve perfect results.

Peak efficiency in today's high-speed sewing of synthetics, and wash and wear fabrics is accomplished only with needles of superior quality and performance.

Imitations or substitutes are a costly compromise. Pennies saved on inferior needles only prove to be expensive dollars in the long run.

The quality of U.S. Needles is, in fact, a matter of world-wide recognition and cannot be duplicated. The confidence of our customers in U.S. Needles is the knowledge that quality is always and has been foremost in our products.

For durability and freedom from breakage, U.S. Needles are unequalled. Their uniform construction, carefully controlled finish and curvature assure efficient, economical stitching.

**BE SURE TO USE ONLY
GENUINE U.S. NEEDLES**



Look for this Label
on all parts

The same precision construction and working perfection exists in all U.S. Machine Parts.

BE SURE TO GET U.S. – ACCEPT NO SUBSTITUTE

U.S. BLINDSTITCH MACHINE CO.

IS A DIVISION OF NEW YORK SEWING MACHINE INC.

8555 Tonnelle Avenue, Unit 301, North Bergen, NJ 07047 • www.usblindstitch.com
Tel: 201-809-2009 • 1-800-225-2852 • FAX: 201-861-9201 • email: machines@nysmac.com

U.S. BLINDSTITCH

Machines are Made with Pride in the U.S.A.

**Over 50 Specialty Machines Available!
CALL 1-800-225-2852 for Catalog and Free
Showroom Display 24"x30" Color Poster!**

MEN'S WEAR TROUSERS, BELT LOOP SERIES

**U.S. Model 1099-BL
U.S. Model 99-BLP-1
U.S. Model 1099-LP-1
U.S. Model 1099-PBW-1
U.S. Model 1099-BS
U.S. Model 1099-WB
U.S. Model 1099-SF-HD**

WOMEN'S WEAR DRESSES, BLOUSES NEGLIGES

**U.S. Model 1118-H, S, HK
U.S. Model 1118-1
U.S. Model 1099-PR**

SUITS AND COATS

**U.S. Model 1118-C
U.S. Model 1099-CS
U.S. Model 638, 638-1
U.S. Model Special 638**

ACTIVE WEAR AND CASUAL WEAR

**U.S. Model 1118-C
U.S. Model 1099-KS
U.S. Model 1118-K**

FORMAL WEAR, HEAVY DUTY AND INDUSTRIAL RENTAL

**U.S. Model 1099-PB-1
U.S. Model 1099-PBW-1
U.S. Model 1099-SF**

INTERIOR TEXTILES (DRAPERIES, CURTAINS, BEDSPREADS)

**U.S. Model 1099-CS
U.S. Model 1118-9
U.S. Model 927**

DRY CLEANERS, DRESSMAKERS, ALTERATION WORKROOMS AND THREAD TRIMMER

**U.S. Model 1118-2
U.S. Model 1099-J
U.S. Model 928-T**



**LOOK FOR THIS LOGO...
FOR GENUINE
U.S. BLINDSTITCH
MACHINES & PARTS**



**U.S. Model
1118-C**



**U.S. Model
1099-CS1HH**



**U.S. Model
1099-BL**

**We have the largest
inventory of genuine
U.S. BLINDSTITCH
Machines and Parts
anywhere!**



U.S. BLINDSTITCH MACHINE COMPANY

8555 Tonnelle Avenue, Unit 301, North Bergen, NJ 07047

Tel: 201.809.2009 • Toll Free: 1.800.225.2852 • Fax: 201.861.9201

Web Site: www.nysmac.com • E-mail: machines@nysmac.com

