

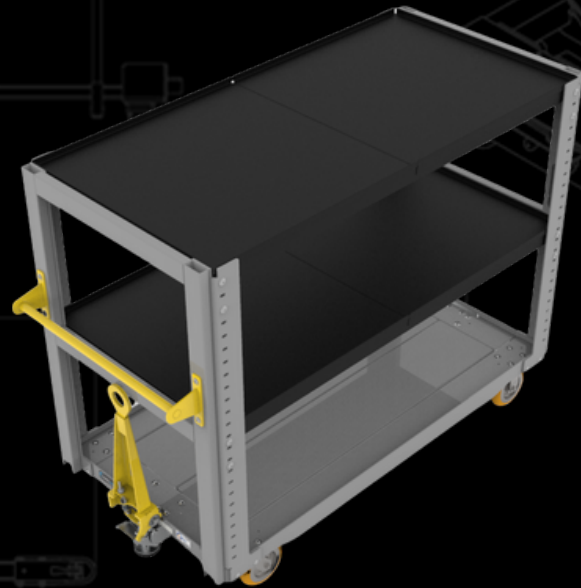


LSTRS-3872-20-2



TONGUE & HITCH

Shelf Tote Style With Alligator Tongue And Floor Lock



38" x 72"

Usable Deck Space



2,000 LBS

Weight Capacity



Rear Steer

Tight-Turn Technology

| | |
|----------------|------------------|
| MODEL NUMBER | LSTRS-3872-20-2 |
| TARE WEIGHT | 569 lbs |
| TOTAL CAPACITY | 2,000 lbs |
| SHELF CAPACITY | 500 lbs |
| STEERING | Rear |
| HANDLE | 44" |
| DECK HEIGHT | 11" |
| CASTER PACKAGE | 2 rigid/2 swivel |



Powder Coat Finish Options

Jtec's versatile shelf tote carts are perfect for all types and sizes of dunnage. This rear-steer cart allows for agile control. Each shelf includes a 1' lip for secure load retainment.

Additional features include:

- Alligator Hitch
- Floor Lock Attachment
- Powder Coat Finish
- Adjustable Shelf Height; 2" Increments
- Premium Apex Caster Package
- Flip-Up Style Tongue
- Polyurea Option For Additional Grip



SCAN ME

