

**“Coloring
Outside the
Lines”**

**Using
Nonverbal
Communication
for Conducting
Effective
Rehearsals**

Dr. Julia Baumanis

**Assistant Professor, Associate Director of Bands
Mason Gross School of the Arts, Rutgers University**

j.baumanis@rutgers.edu



“Expressive Conducting,”
moving beyond the beat patterns

Rehearsal Strategies



WARM UP:
"Color outside the lines"



?



Nonverbal
Communication
Exercise

Movement
with *Intention*

Make the
transfer to your
students:

Intention vs.
Function

Teaching with
Intention

Conducting
with *Intention*

LABAN MOVEMENTS

Glen Adsit, The Hartt School



LABAN

THE EIGHT EFFORTS:

Punch, Slash, Dab, Flick, Press, Wring, Glide, Float

THE FOUR COMPONENTS:

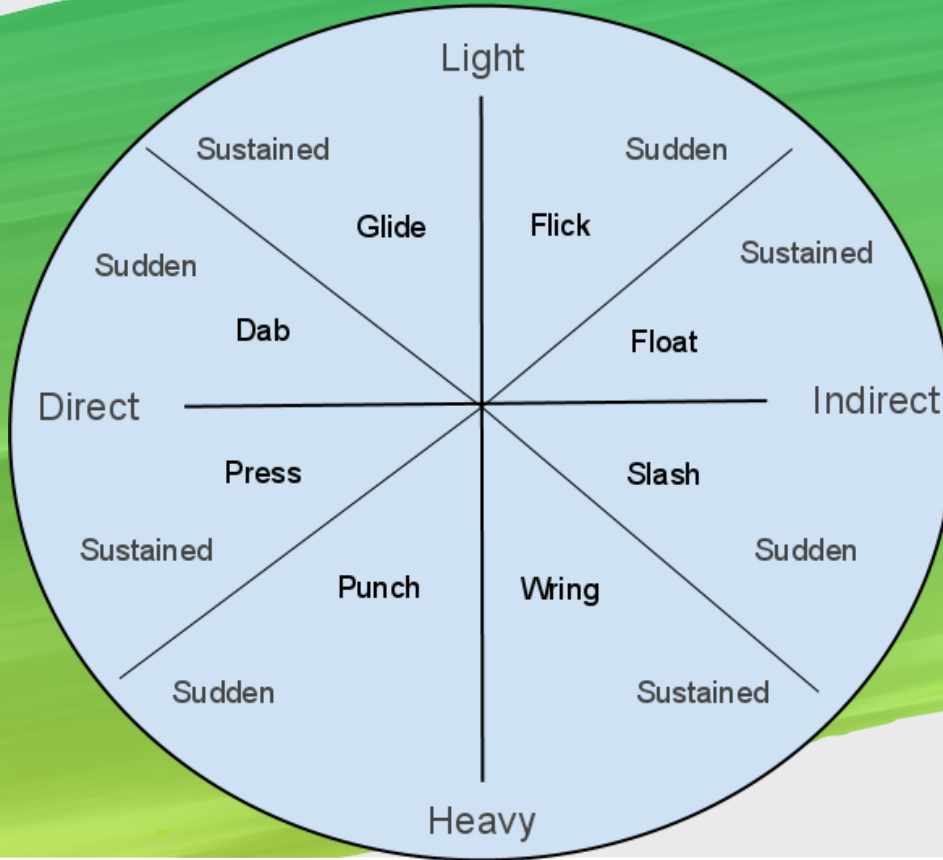
Direction: Direct or Indirect

Speed: Quick or Sustained

Weight: Heavy or Light:

Flow: Bound or Free

Nonverbal Communication for Conducting Effective Rehearsals



Nonverbal Communication for Conducting Effective Rehearsals

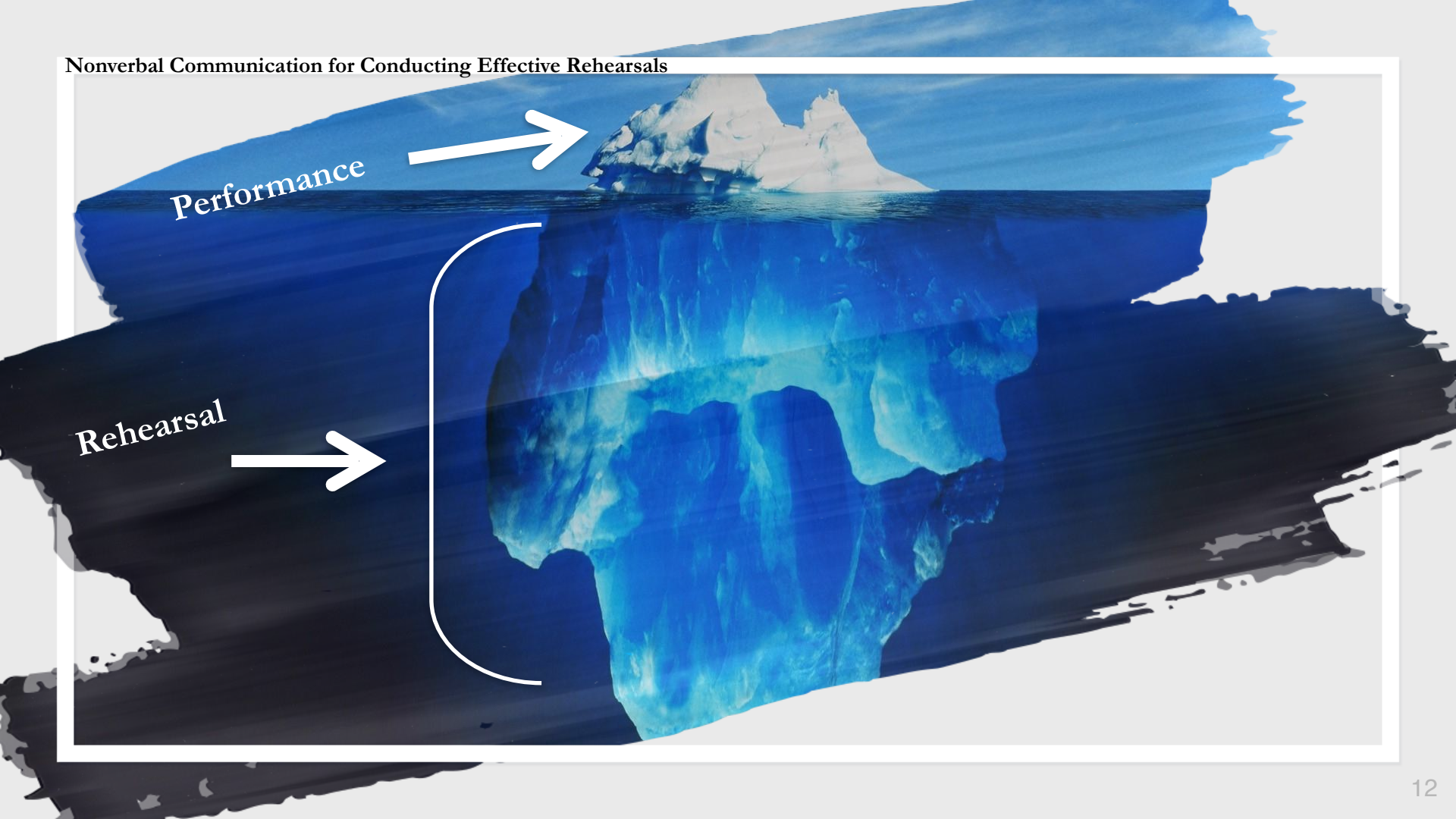


Laban
with
Music?



Is *that* all?

Nonverbal Communication for Conducting Effective Rehearsals

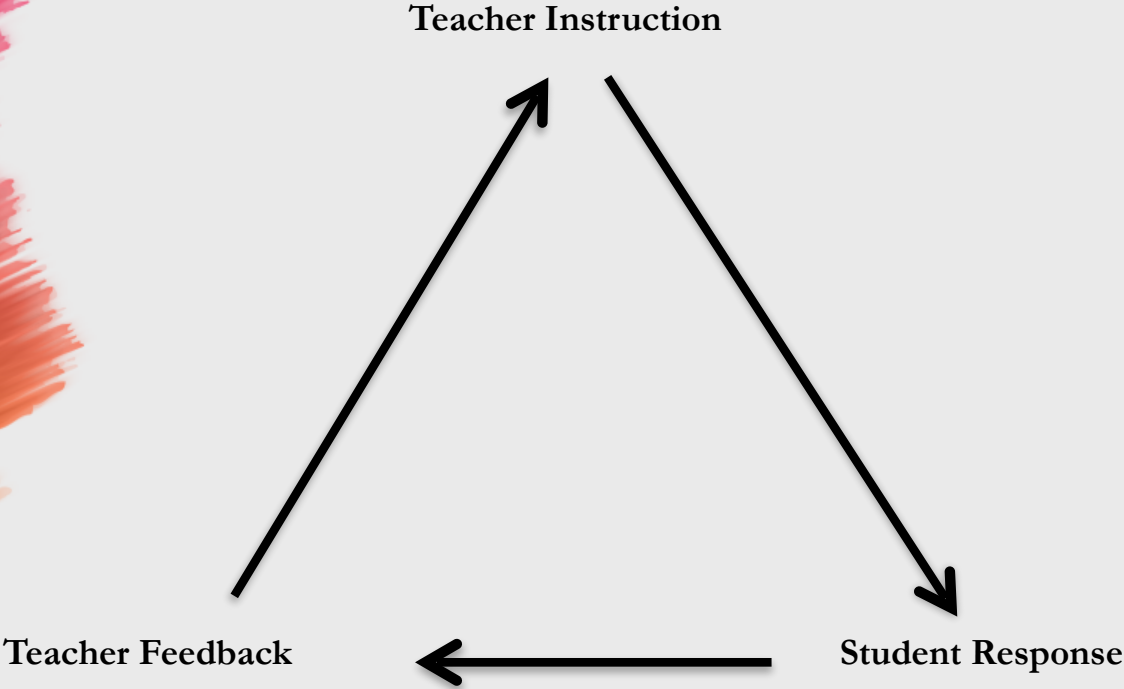
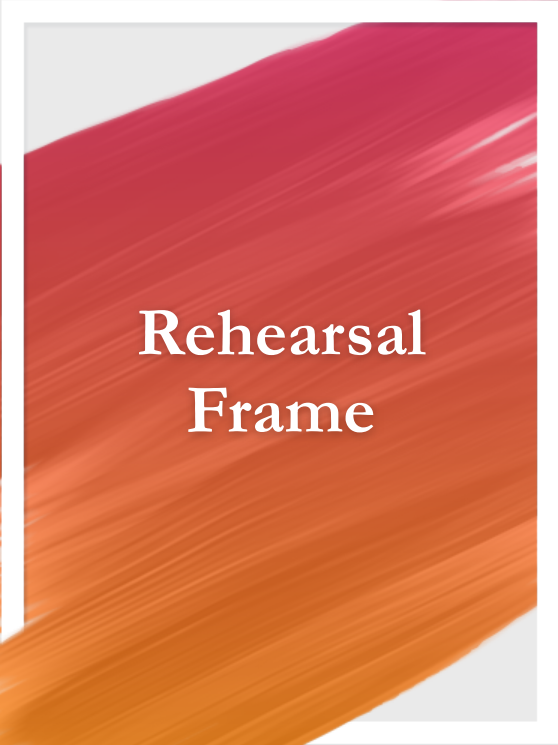


Rehearsal

Rehearsal (Strategies)

Rehearsal Frame

Robert Duke,
University of Texas, Austin





Putting it all
together



Rehearsal Frame: Twinkle, Twinkle

- Remember Laban in Conducting
- 5 Words or Less
- Nonverbal Communication

BUT WAIT!

It's not what you say, but how
you say it

Why does this matter?



Effective
Teaching

Your Favorite Teacher

Why?

Why does this
matter?



"Love is at the root of
everything - all learning, all
parenting, all
relationships...love, or the
lack of it."

– Fred Rogers

Tell Your
Story!



GO ON...
TELL YOUR STORY!

SHARE YOUR STORY AND WORDS OF
ENCOURAGEMENT AS A WOMAN BAND DIRECTOR

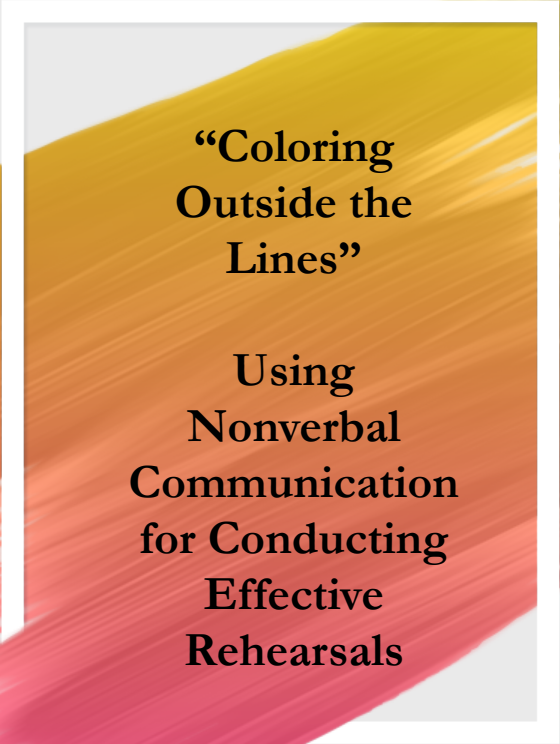
SCAN THE QR CODE TO
BE A PART OF OUR
PROJECT

—
Dr. LaToya A. Webb &
Dr. Julia L. Baumanis

Contact with questions

latoya.webb@austin.utexas.edu
j.baumanis@rutgers.edu





**“Coloring
Outside the
Lines”**

**Using
Nonverbal
Communication
for Conducting
Effective
Rehearsals**

Dr. Julia Baumanis

Assistant Professor, Assistant Director of Bands

Mason Gross School of the Arts, Rutgers University

j.baumanis@rutgers.edu